



For Sub-Sublease

1062 Homer Street
Suite 200 - 2,258 s.f.

BUILDING & LOCATION

The building is located in the centre of Yaletown on Homer Street between Nelson and Helmcken Streets. With a ground floor retail operator attached, the building is accessible by fob access. Street parking is available right outside the front of the building directly on Homer Street. Walking distance to major shops and restaurants in the heart of Yaletown.

SALIENT DETAILS



SUITE 200
2,258 s.f.



AVAILABILITY
Immediately



FURNITURE
Available



SUB-SUBLEASE EXPIRY
October 2026



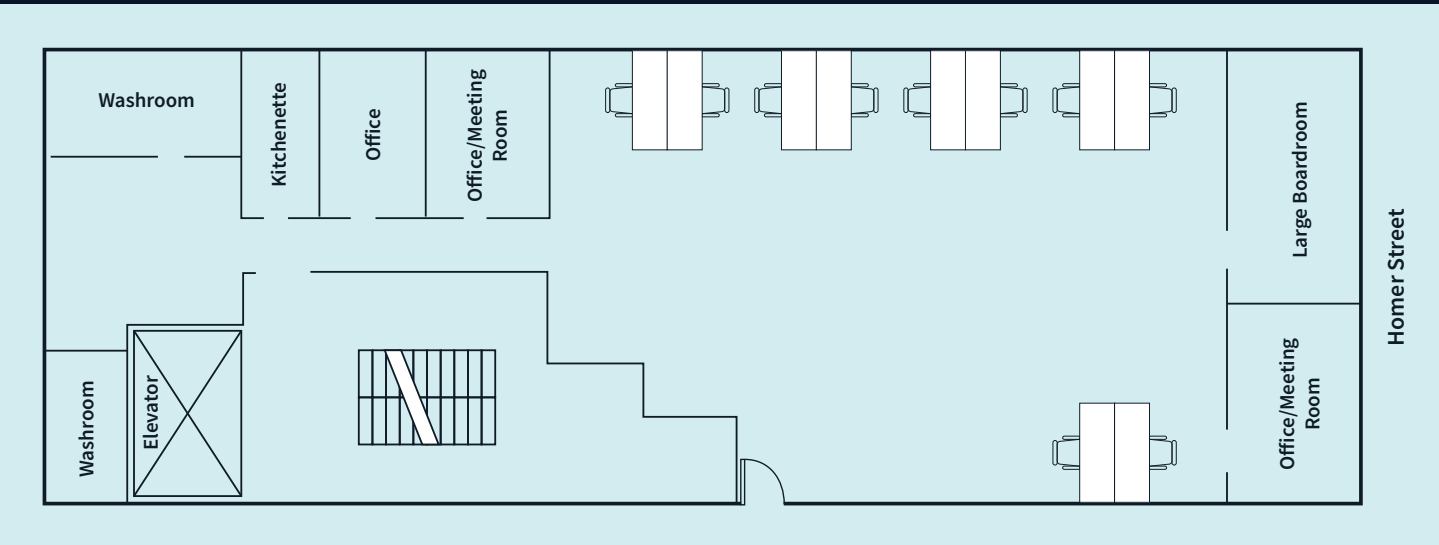
BASIC RENT
Contact listing agent

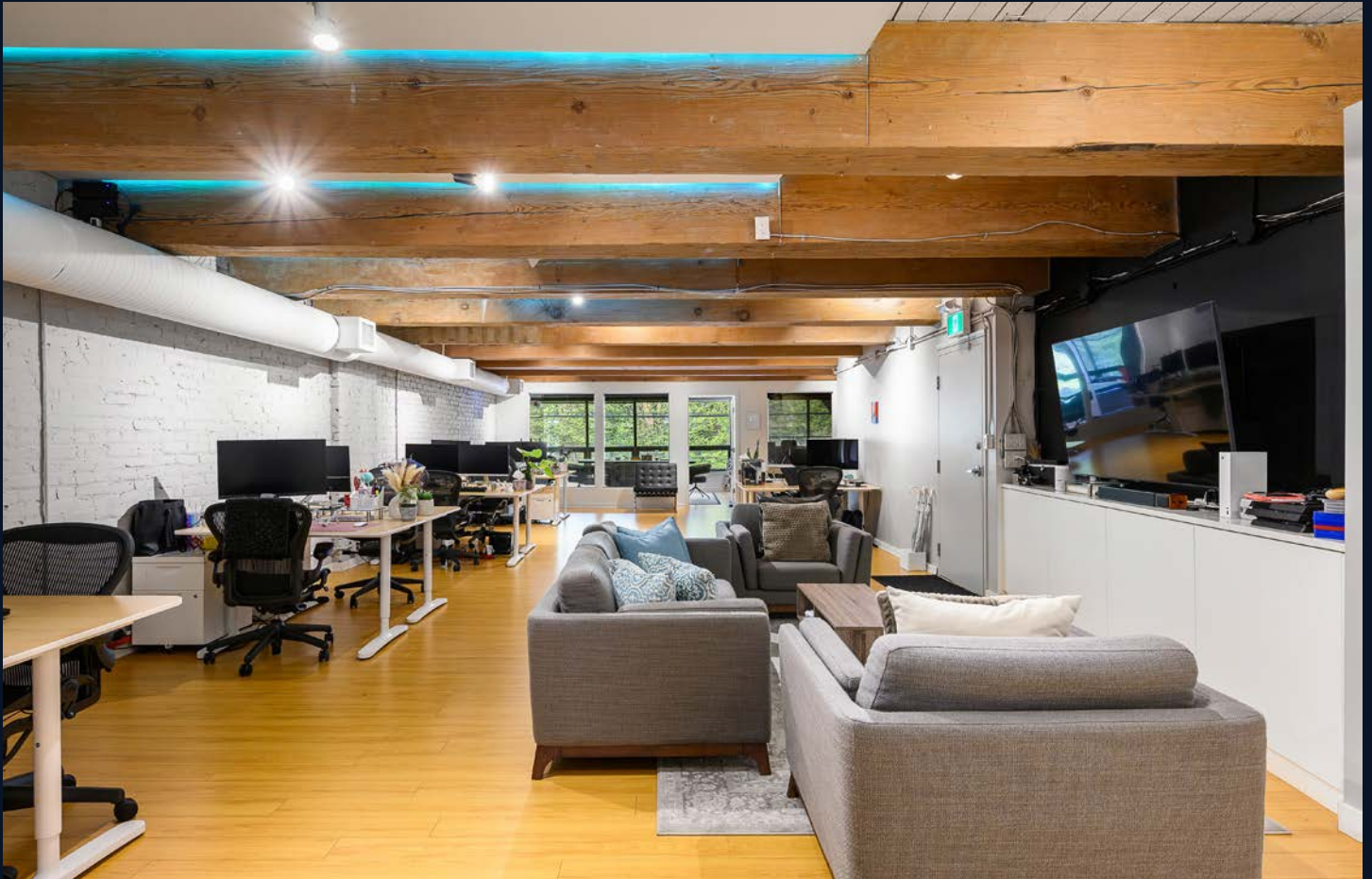


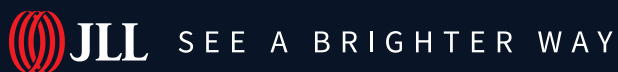
ADDITIONAL RENT (2025)
\$16.96 psf/pa (estimate)

THE SUITE

The suite directly overlooks Homer Street and features attractive improvements, including a spacious boardroom, three offices/meeting rooms, a kitchenette, and private in-suite bathrooms. This space is available partially or fully furnished.







Fraser Hurst

Senior Associate

fraser.hurst@jll.com

+1 604 998 6002

Although information has been obtained from sources deemed reliable, neither Owner nor JLL makes any guarantees, warranties or representations, express or implied, as to the completeness or accuracy as to the information contained herein. Any projections, opinions, assumptions or estimates used are for example only. There may be differences between projected and actual results, and those differences may be material. The Property may be withdrawn without notice. Neither Owner nor JLL accepts any liability for any loss or damage suffered by any party resulting from reliance on this information. If the recipient of this information has signed a confidentiality agreement regarding this matter, this information is subject to the terms of that agreement.