



SCAN FOR BROCHURE



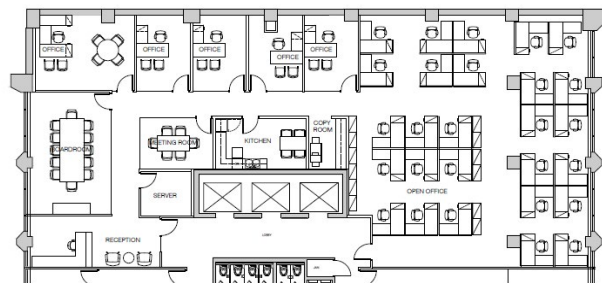
Shell space ready for landlord turnkey at below-market rates.

Area Unit 305: 5,209 SF

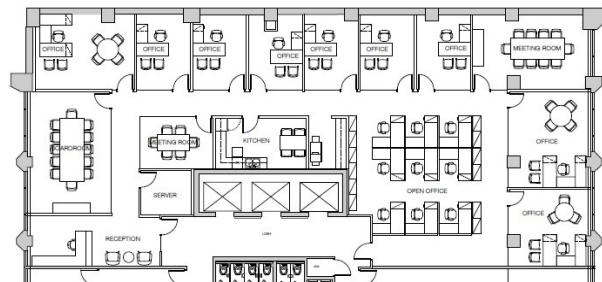
Availability Ready for fixturing

Basic Rent Contact Agents

Additional Rent \$19.31 PSF (2025 est.)



Sample test fit 1



Sample test fit 2

Willow King

Personal Real Estate Corporation
ASSOCIATE VICE PRESIDENT
 +1 604 210 2150
 willow@floorspace.ca

Robin Macdonald

SENIOR ASSOCIATE
 +1 604 617 1445
 robin@floorspace.ca