

8327 - 8339 EASTLAKE DRIVE

BURNABY, BC



# eastlake

CAMPUS

CAMPUS-STYLE DEVELOPMENT FOR LEASE

# eastlake

CAMPUS

310,000 SF | 6-BUILDING CAMPUS

Eastlake Campus is the perfect hub for bringing ideas to life. Located in the bustling Lake City business district of Burnaby, BC, just a stone's throw from Vancouver, Eastlake Campus offers a prime Metro Vancouver location. The campus offers different access to SkyTrain and main throughfare, providing easy commutes "throughout the Lower Mainland."

Totaling 310,000 SF, Eastlake Campus features six multi-tenant or build-to-suit flex-style buildings. The state-of-the-art concrete construction, customizable spaces, and proximity to amenities provide an unparalleled work environment - all set within a beautifully landscaped, campus-style setting.

OFFICE & LIGHT INDUSTRIAL BAYS

UP TO 2,240 SF AVAILABLE

GRADE LOADING  
DOORS

WAREHOUSE CEILING  
HEIGHT: 20' - 24'

OFFICE/SHOWROOM  
CEILING HEIGHT: 13'

10 MIN WALK TO  
SKYTRAIN

ON-SITE CAFÉ WITH  
COFFEE, PASTRIES,  
AND LIGHT BITES

BIKE LOCKING  
LOCATIONS AND  
END-OF-TRIP  
FACILITIES WITH  
SHOWERS

CLOSE PROXIMITY  
TO TRANS-CANADA  
AND LOUGHEED  
HIGHWAYS



# east|ake

CAMPUS

EASTLAKE DRIVE

8339

8337

8333

8331

8329

8327



# current

AVAILABILITIES

## 8327 Eastlake Drive

Suite	SF	Availability	Lease Rate
106*	2,240 SF	June 1, 2026	Contact Leasing Agents

\*TAXES & OPERATING COST | \$12.97 PSF per annum (Est. 2026)

## 8331 Eastlake Drive

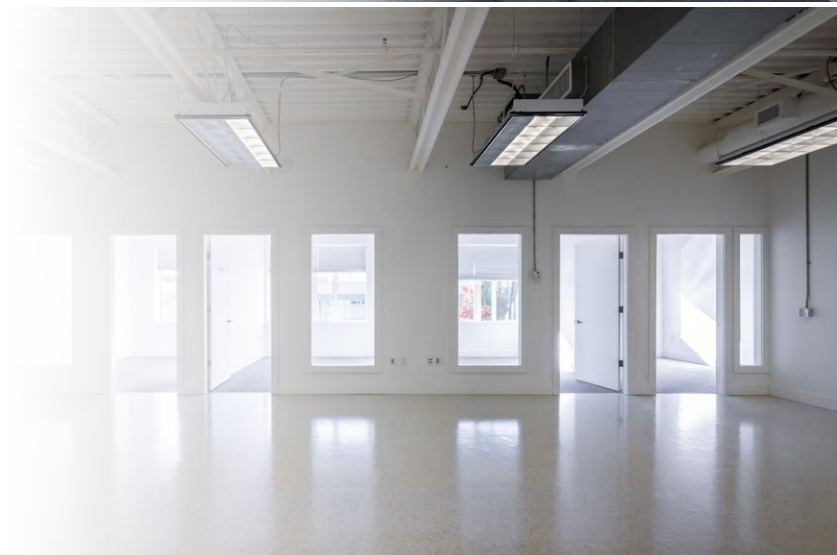
Suite	SF	Availability	Lease Rate
111*	2,060 SF	Now	Contact Leasing Agents

\*TAXES & OPERATING COST | \$12.89 PSF per annum (Est. 2026)

## 8337 Eastlake Drive

Suite	SF	Availability	Lease Rate
110*	2,014 SF	Now	Contact Leasing Agents

\*TAXES & OPERATING COST | \$13.02 PSF per annum (Est. 2026)



# explore the NEIGHBOURHOOD

## DINING

1. The Café (*On-site café*)
2. Cafe Artigiano
3. Canadian Pizza Plus
4. Foodies on Board
5. Megabite Pizza
6. Rod's Kitchen & Grill
7. Sandwich Tree
8. Subway
9. Sushia
10. Ultra Wave

## RETAIL

1. Prostock Athletic Supply
2. Race Face Components
3. Two Way Hockey
4. United Library Services - BC Division

## FITNESS & RECREATION

1. P&B Dance Unlimited Studios

## SKYTRAIN STATION

1. Production Way-University



# prime location

IN THE HEART OF BURNABY

east|lake  
CAMPUS



**DRIVETIME TO**  
8337 Eastlake Drive

- <15 Min
- 15-30 Min
- 30-45 Min
- 45-60 Min
- SkyTrain Stops

# eastlake

CAMPUS



8327 - 8339 EASTLAKE DRIVE

BURNABY, BC

## CONTACT US

### LIAM BOULTBEE

Senior Associate  
604 629 5023  
liam.boulton@cushwake.com

### ETHAN REGAN

Associate  
604-608-5916  
ethan.regan@cushwake.com

### ROGER LEGGATT

Personal Real Estate Corporation  
Executive Vice President  
604 640 5882  
roger.leggatt@cushwake.com

### MAX ZESSEL

Personal Real Estate Corporation  
Senior Vice President  
604 640 5824  
max.zessel@cushwake.com

©2026 Cushman & Wakefield. All rights reserved. The information contained in this communication is strictly confidential. This information has been obtained from sources believed to be reliable but has not been verified. NO WARRANTY OR REPRESENTATION, EXPRESS OR IMPLIED, IS MADE AS TO THE CONDITION OF THE PROPERTY (OR PROPERTIES) REFERENCED HEREIN OR AS TO THE ACCURACY OR COMPLETENESS OF THE INFORMATION CONTAINED HEREIN, AND SAME IS SUBMITTED SUBJECT TO ERRORS, OMISSIONS, CHANGE OF PRICE, RENTAL OR OTHER CONDITIONS, WITHDRAWAL WITHOUT NOTICE, AND TO ANY SPECIAL LISTING CONDITIONS IMPOSED BY THE PROPERTY OWNER(S). ANY PROJECTIONS, OPINIONS OR ESTIMATES ARE SUBJECT TO UNCERTAINTY AND DO NOT SIGNIFY CURRENT OR FUTURE PROPERTY PERFORMANCE. COE-PM-West-06.4.2026