

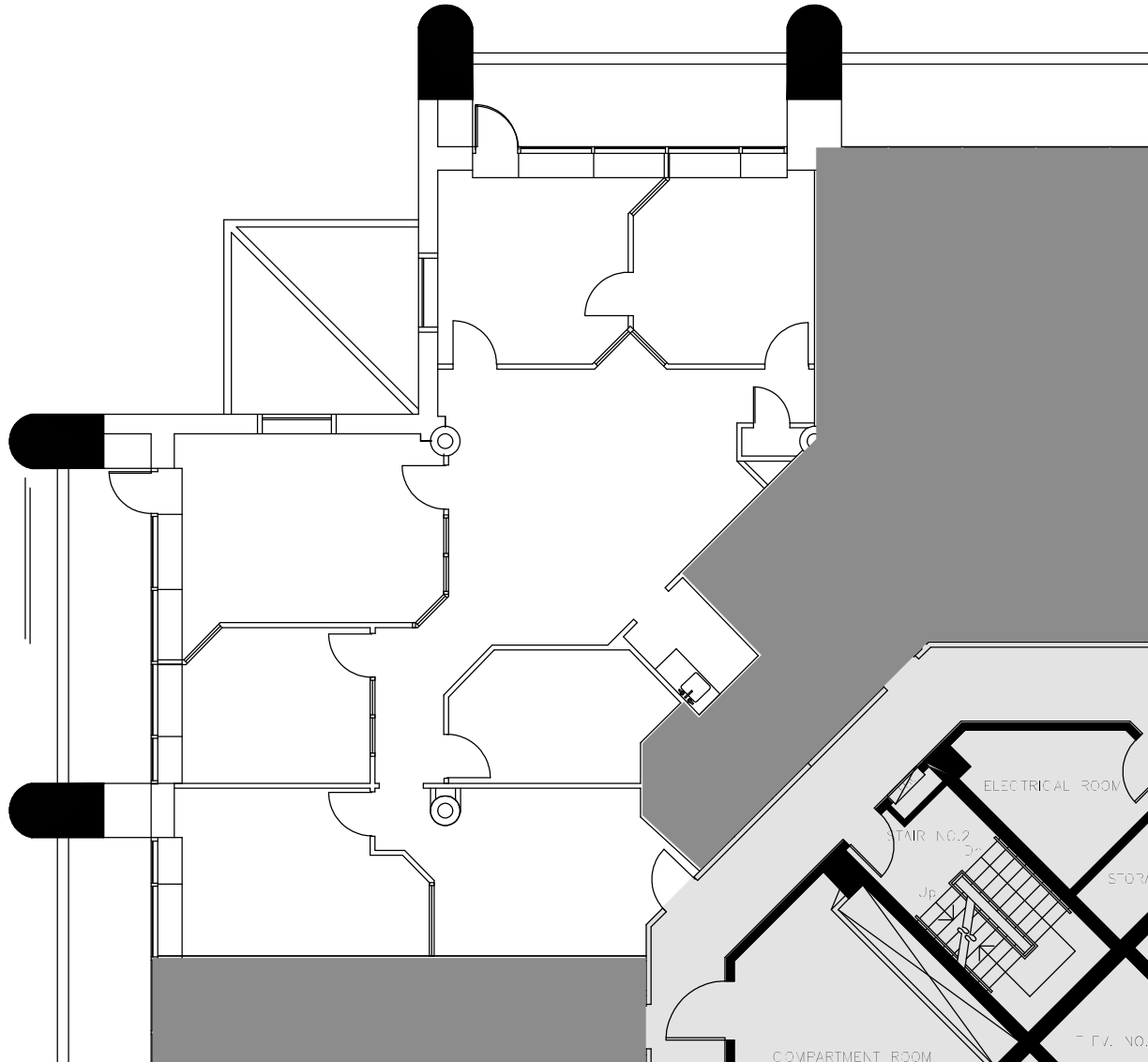
UNIT PLAN

Purdy's Wharf Tower II Suite 2004

1969 Upper Water Street
Halifax Canada B3J 3R7

CONTACT INFORMATION

GWL Realty Advisors Inc
(902) 421-1122 | pwoneserve@gwlra.com

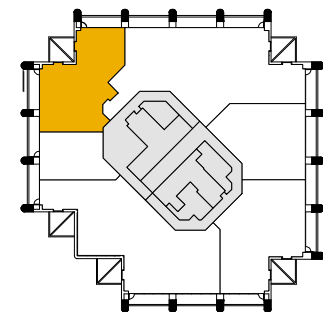


SUITE VIEW

INFORMATION

SUITE: 20th floor, Suite 2004
RENTABLE AREA: 2,140 sq.ft.

Purdy's Wharf Tower Two is a 22-storey Class "AAA" office building that is the prominent business address in Halifax. It is attractively located on the Waterfront and is connected to the Pedway system in Halifax's Central Business District. The building features a striking coloured glass and concrete exterior and the complex dominates the Halifax skyline.



KEY PLAN