

805&806 938 Howe St, Vancouver

OFFICE SPACE FOR SALE



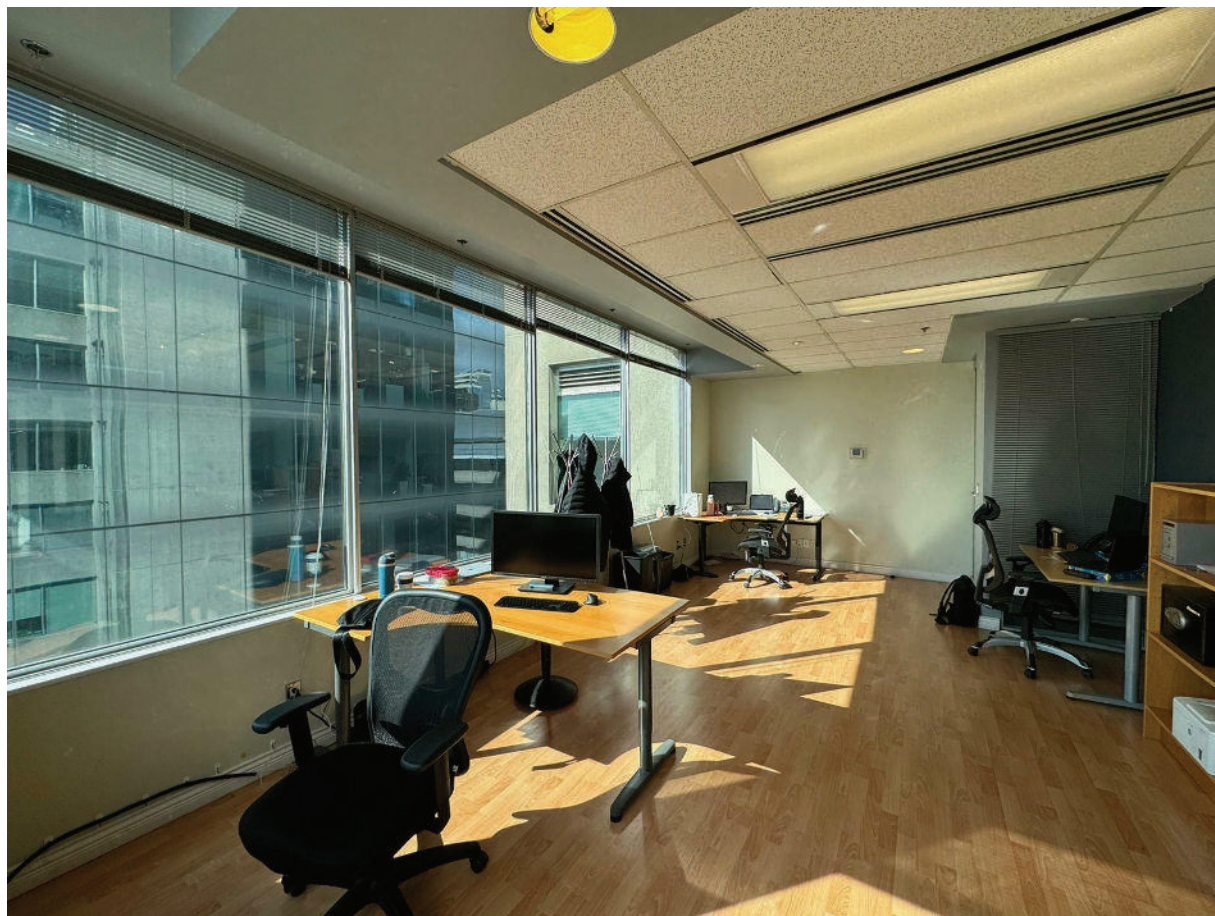
Jason Lai
Personal Real Estate Corporation
jlai@rennie.com
rennie.com/jasonlai
778.996.1788

Amber Wang
Commercial Real Estate Advisor
awang@rennie.com
rennie.com/amberwang
604.723.1071



rennie

Property Overview



Opportunity to own prominently located office space within the Central Business District in Downtown Vancouver. Located within the coveted Pacific Place development, directly adjacent to the Vancouver Law Courts, this 562 square feet office features ease of accessibility in-and-out of Downtown Vancouver, robust amenities at your doorstep, and just a 5-minute walk to the Vancouver City Centre Skytrain Station. Featuring a sleek curtain wall glass front exterior, bright lobby entrance, communal boardroom, and building concierge.

Property Highlights

DETAILS

- Prime downtown core location, directly opposite Vancouver Law Courts;
- Access to a shared boardroom conference facilities within the building for collaborative use
- Conveniently located within a 5-minute walk to Vancouver City Centre Skytrain station

LEASE DETAILS

Expiry: September 2026

ADDRESS

Unit 805 & 806-938 Howe Street,
Vancouver, V6Z 1N9

MUNICIPALITY

Vancouver-Downtown Core

ZONING

DD

YEAR BUILT

1991

PROPERTY SIZE(s.f.)

805: 230

806: 332

Total: 562

GROSS PROPERTY TAX(2023)

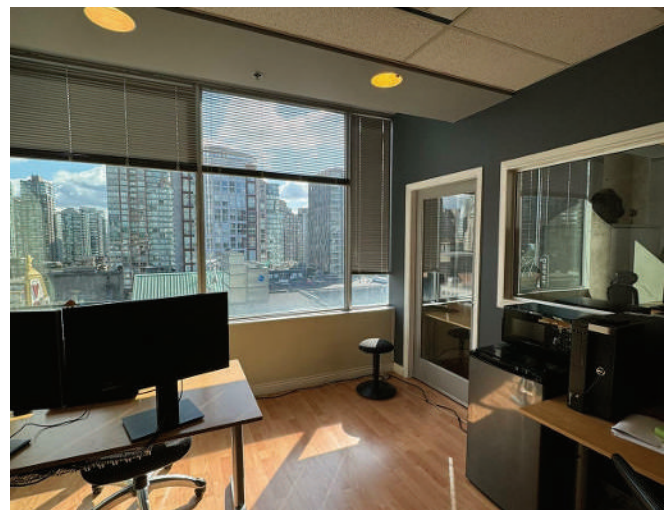
\$8,710.57

STRATA FEE

\$519.47

ASKING PRICE

\$786,800



Floor Plan

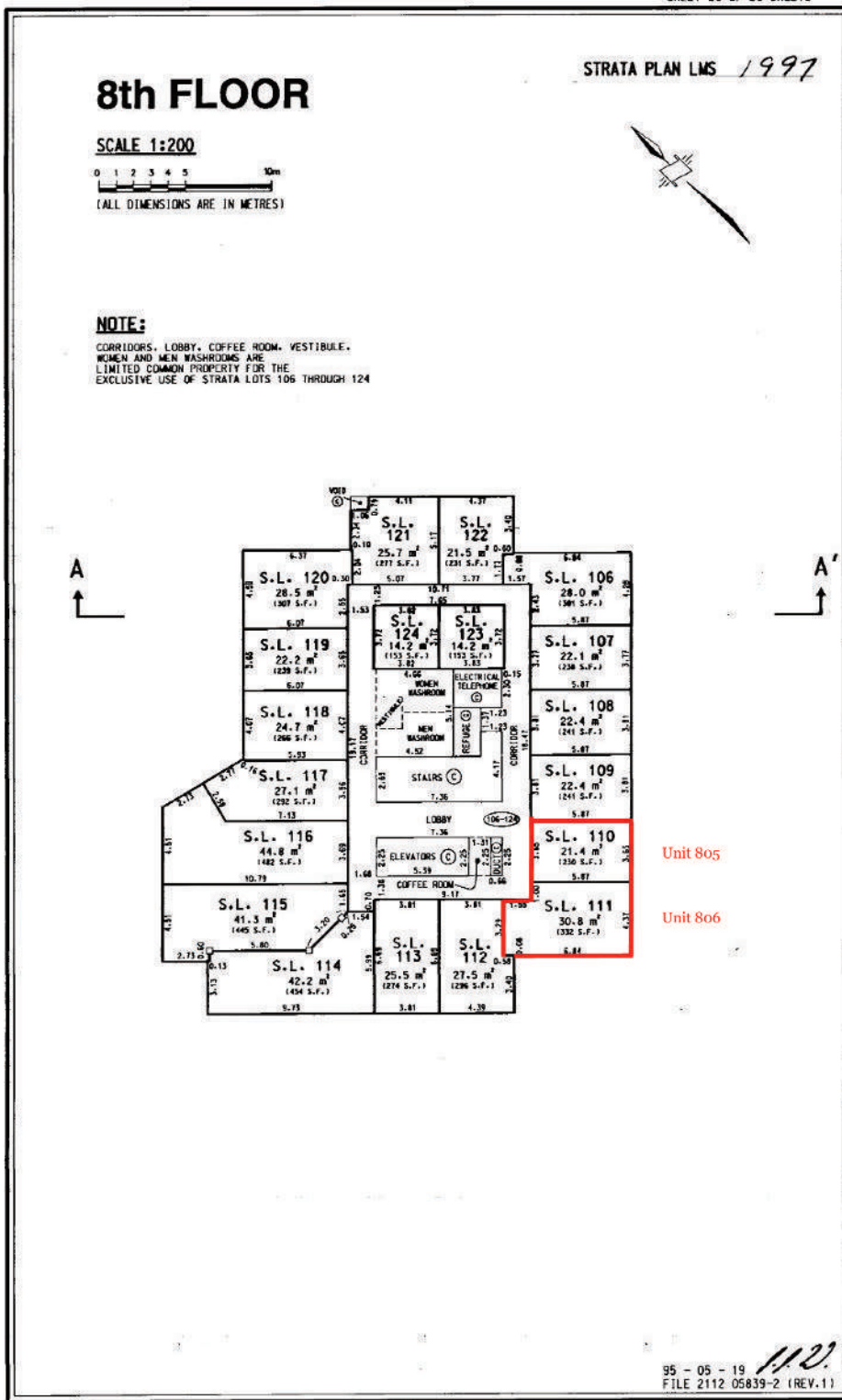
SHEET 20 OF 29 SHEETS

Status: Filed

Plan #: LMS1997 App #: N/A CH #: (Altered) RCVD: 1995-06-05 ROST: 2024-02-12 18:14:06

Plan #: LMS1997 App #: N/A CH #: (Altered)

RCVD: 1995-06-05 ROST: 2024-02-12 18:14:06



**we look forward
to working
with you.**

Jason Lai PREC*
Personal Real Estate Corporation

jlai@rennie.com
rennie.com/jasonlai
778.99786.18

Amber Wang
Commercial Real Estate Advisor

awang@rennie.com
rennie.com/amberwang
604.723.1071



Rennie & Associates Realty Ltd.
110-1650 1st Avenue
Vancouver, BC V6J 1G1 Canada

T 604.681.8898
F 604.681.9899
rennie.com

rennie