

# 1050 Homer Street

Vancouver, BC



## LEASING CONTACT

### ELI APPLEBAUM

PERSONAL REAL ESTATE CORPORATION  
Vice President

[eli.applebaum@cbre.com](mailto:eli.applebaum@cbre.com) T 604.662.5164

### TARA FINNEGAN

PERSONAL REAL ESTATE CORPORATION  
Senior Vice President

[tara.finnegan@cbre.com](mailto:tara.finnegan@cbre.com) T 604.662.5159

**ALLIED**

**CBRE**

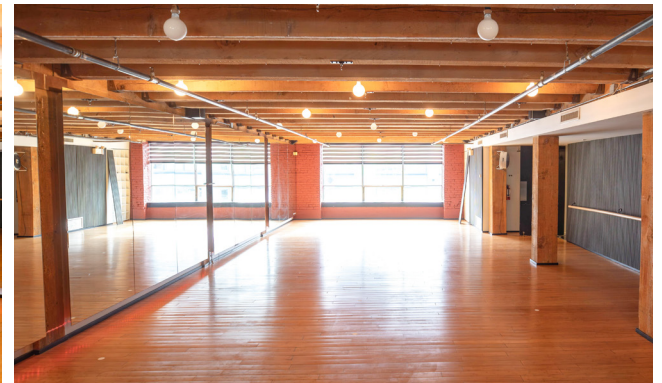
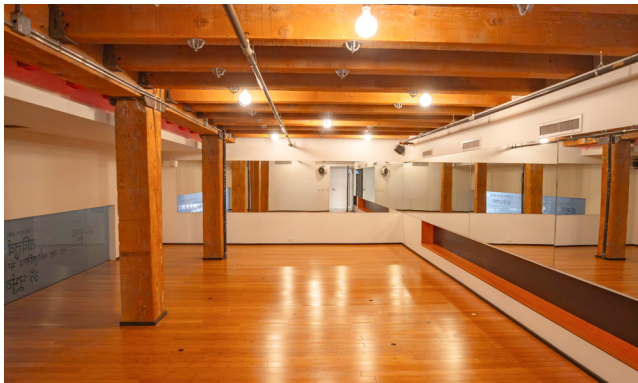
# Property Highlights

Originally constructed in 1910 as a warehouse between Nelson & Helmcken Street, this 4 storey building is centrally located amongst Vancouver's lively and historic Yaletown neighbourhood. Located just minutes from the world-class walking/cycling area of the False Creek Seawall, the Central Business District, and upscale Coal Harbour. This location is surrounded by an abundance of local boutiques, award-winning restaurants, and neighbourhood-relished cafes. Steps away from the Yaletown-Roundhouse Station providing ease of access via all forms of transportation.

<b>District:</b>	Yaletown
<b>Area:</b>	Suite 280 - 4,797 SF
<b>Availability:</b>	Immediately
<b>Rent</b>	Contact Listing Agents
<b>Additional Rent</b>	\$20.50 PSF (2026 estimate)

## Suite 280 - Premises Features

- Reception area and entry way
- Two large rooms with mirrors on two sides
- Exposed brick and beam throughout
- Mens and Womens washrooms
- Large shower blocks
- Currently improved as a yoga studio
- Market TI Allowance available to qualified tenants
- Common rooftop patio available for tenant use

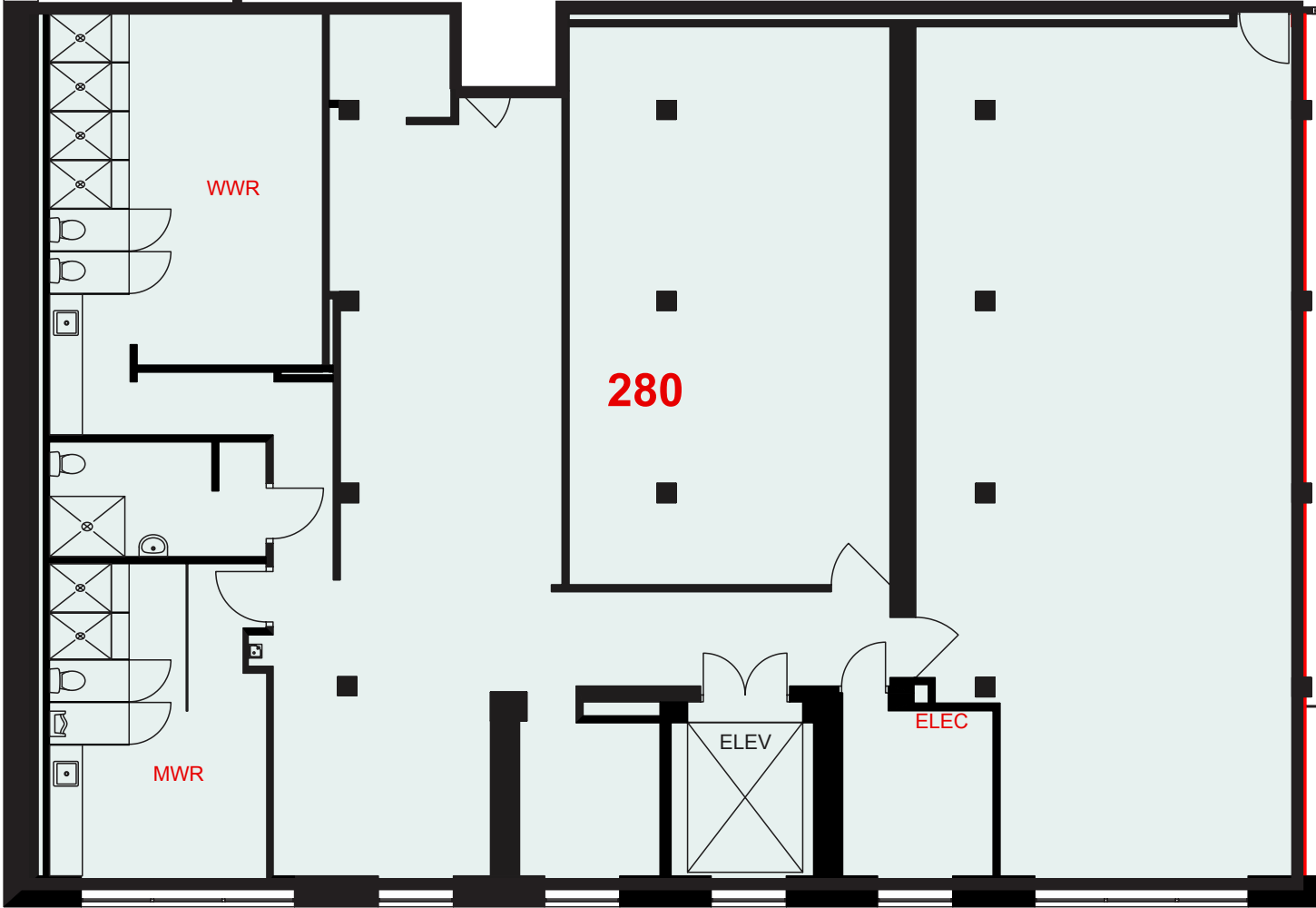


# Suite 280 - Floor Plan

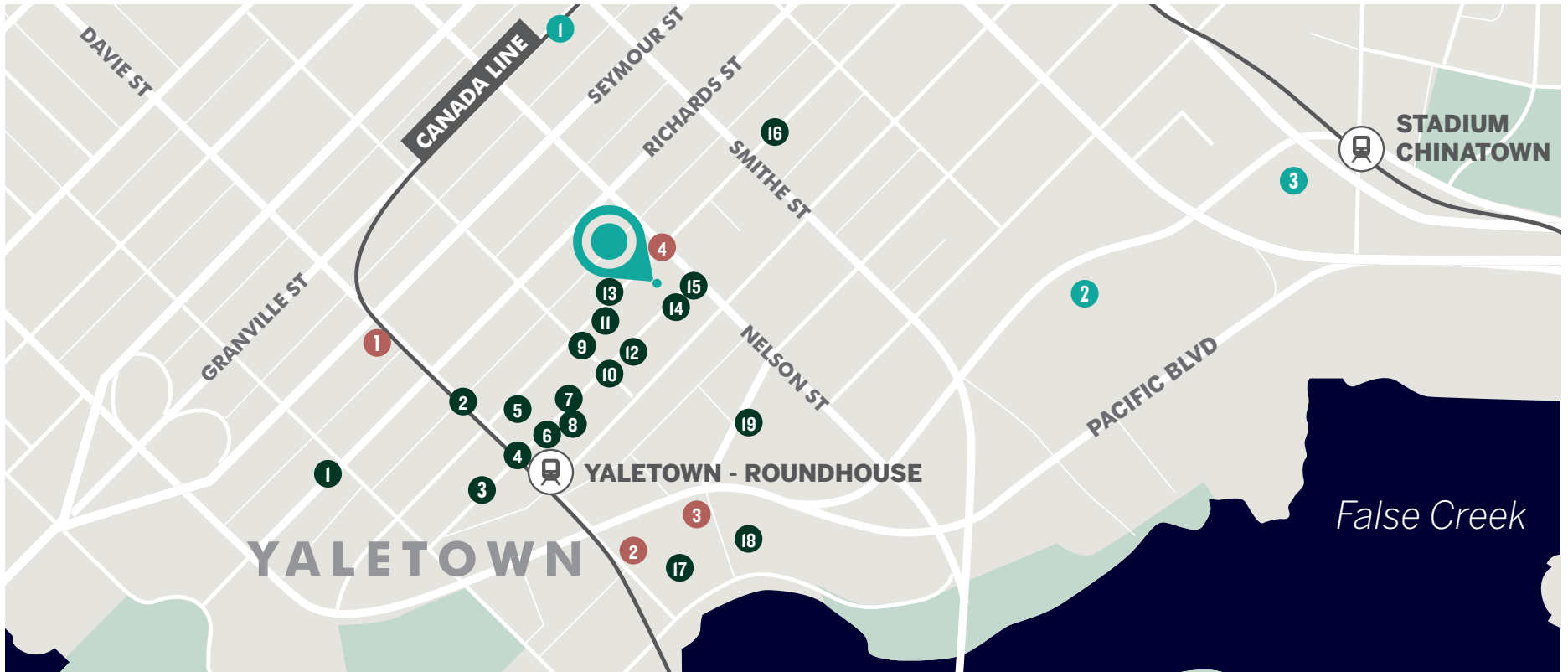
Area: 4,797 SF

Availability: Immediately

 [Click for an interactive walk through of Suite 280](#)



# Local Amenities



## 1050 HOMER STREET

### RESTAURANT & CAFES

1. Matchstick Yaletown
2. JJ Bean
3. Rodney's Oyster House
4. La Pentola
5. Cactus Club Cafe
6. Starbucks
7. The Flying Pig Yaletown
8. MeeT Yaletown

9. Elisa
10. Yaletown Brewing Company
11. Blue Water Cafe
12. Earls Kitchen + Cafe
13. Small Victory Bakery
14. Tacofino Yaletown
15. The Keg Steakhouse + Bar
16. Homer St. Cafe and Bar
17. Provence Marinaside

18. Bella Napoli
19. La Terrazza

### ENTERTAINMENT

1. Vogue Theatre
2. BC Place
3. Rogers Arena

### RETAIL & SERVICES

1. Choices
2. Urban Fare
3. Soul Cycle
4. Barre Fitness

# Yaletown

Yaletown is a historically rich and magnetic area of downtown Vancouver. Once a gritty, industrial pocket of the downtown peninsula, Yaletown has been redeveloped to its current amenity rich state, offering abundant top rated restaurants and hotels mixed in with residences, commercial office spaces and shopping amenities delivering vibrancy day and night. Knowledge based, technology and gaming companies have been drawn to the character brick and beam warehouse conversion buildings available in Yaletown. Just steps from the Seawall and Yaletown-Roundhouse Canada Line Station, Yaletown delivers a perfect combination of work and play atmosphere with easy access to surrounding areas of periphery and core downtown Vancouver.





**CBRE LIMITED**  
1021 West Hastings Street  
Suite 2500  
Vancouver, BC V6E 0C3

**ELI APPLEBAUM**  
PERSONAL REAL ESTATE CORPORATION  
Vice President | Office Properties  
[eli.applebaum@cbre.com](mailto:eli.applebaum@cbre.com) T 604.662.5164

**TARA FINNEGAN**  
PERSONAL REAL ESTATE CORPORATION  
Senior Vice President | Office Properties  
[tara.finnegan@cbre.com](mailto:tara.finnegan@cbre.com) T 604.662.5159



This disclaimer shall apply to CBRE Limited, Real Estate Brokerage, and to all other divisions of the Corporation; to include all employees and independent contractors ("CBRE"). The information set out herein, including, without limitation, any projections, images, opinions, assumptions and estimates obtained from third parties (the "Information") has not been verified by CBRE, and CBRE does not represent, warrant or guarantee the accuracy, correctness and completeness of the Information. CBRE does not accept or assume any responsibility or liability, direct or consequential, for the Information or the recipient's reliance upon the Information. The recipient of the Information should take such steps as the recipient may deem necessary to verify the Information prior to placing any reliance upon the Information. The Information may change and any property described in the Information may be withdrawn from the market at any time without notice or obligation to the recipient from CBRE. CBRE and the CBRE logo are the service marks of CBRE Limited and/or its affiliated or related companies in other countries. All other marks displayed on this document are the property of their respective owners. All Rights Reserved. Mapping Sources: Canadian Mapping Services [canadamapping@cbre.com](mailto:canadamapping@cbre.com); DMTI Spatial, EnviroNics Analytics, Microsoft Bing, Google Earth.