



FOR LEASE

1112

West
Pender
Street



Amenities



Private Shower Facilities



24-7 Building Security



Secure Underground Parking



Ground Floor Food & Beverage Operators



Salient Details

Suite 302: 2,755 s.f.

Suite 403: 1,616 s.f.

Suite 407: 1,470 s.f.

Suite 702: 1,591 s.f.

Suite 705: 1,750 s.f.

Suite 804: 4,412 s.f.

Suite 820: 791 s.f.

Suite 902: 812 s.f.

Suite 908: 1,587 s.f.

Availability: Immediately

Asking Rate: Contact listing brokers

Additional Rent: \$21.93 psf/pa (2025)

Parking: Underground parking



Building Features



Available: Immediately



Term: Flexible Short or Long-Term Lease Solutions



Move-in-Ready Options & Full Landlord Turnkey Available



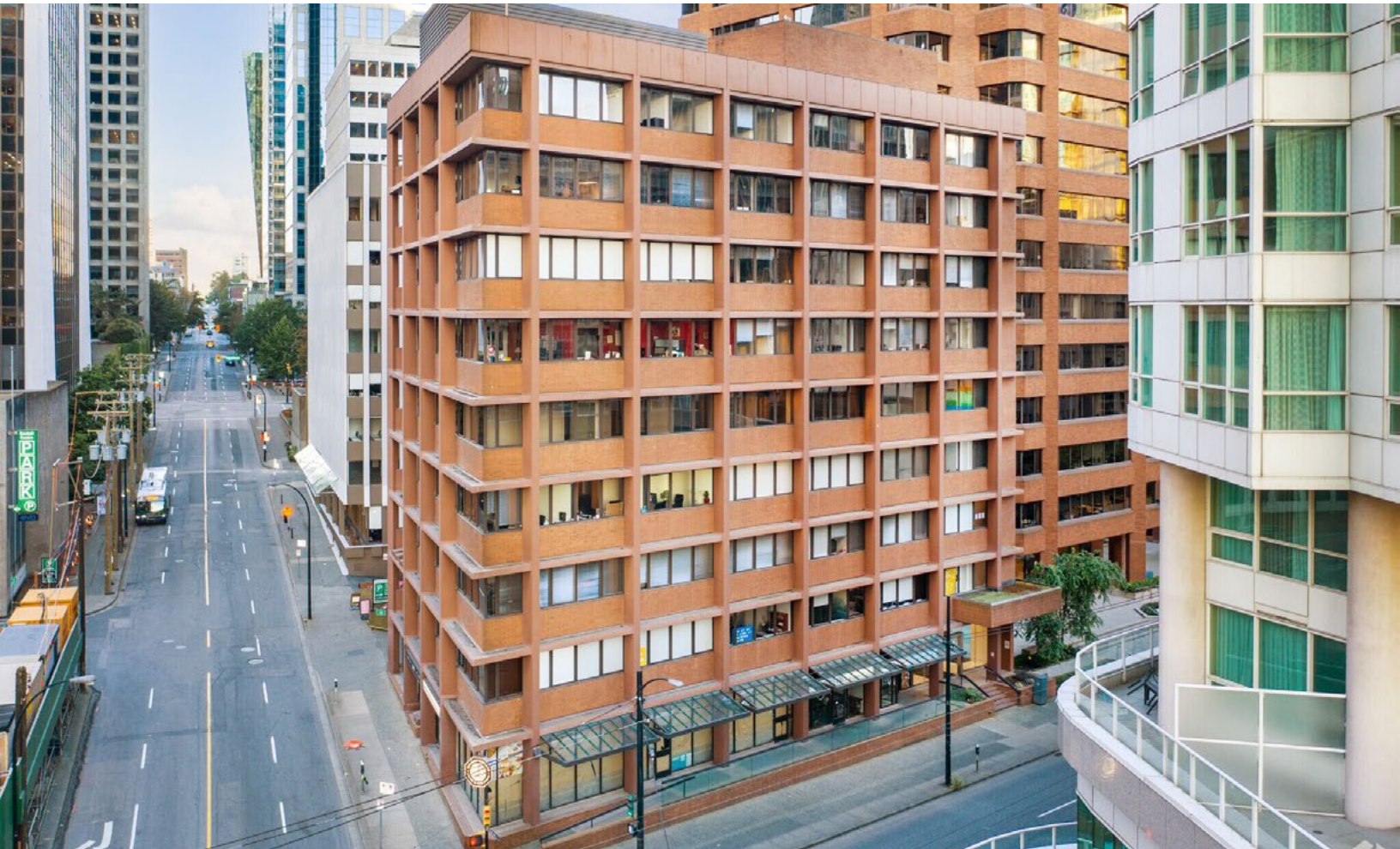
Private Shower Facilities



Recently Renovated Lobby & Common Washrooms



Water Views

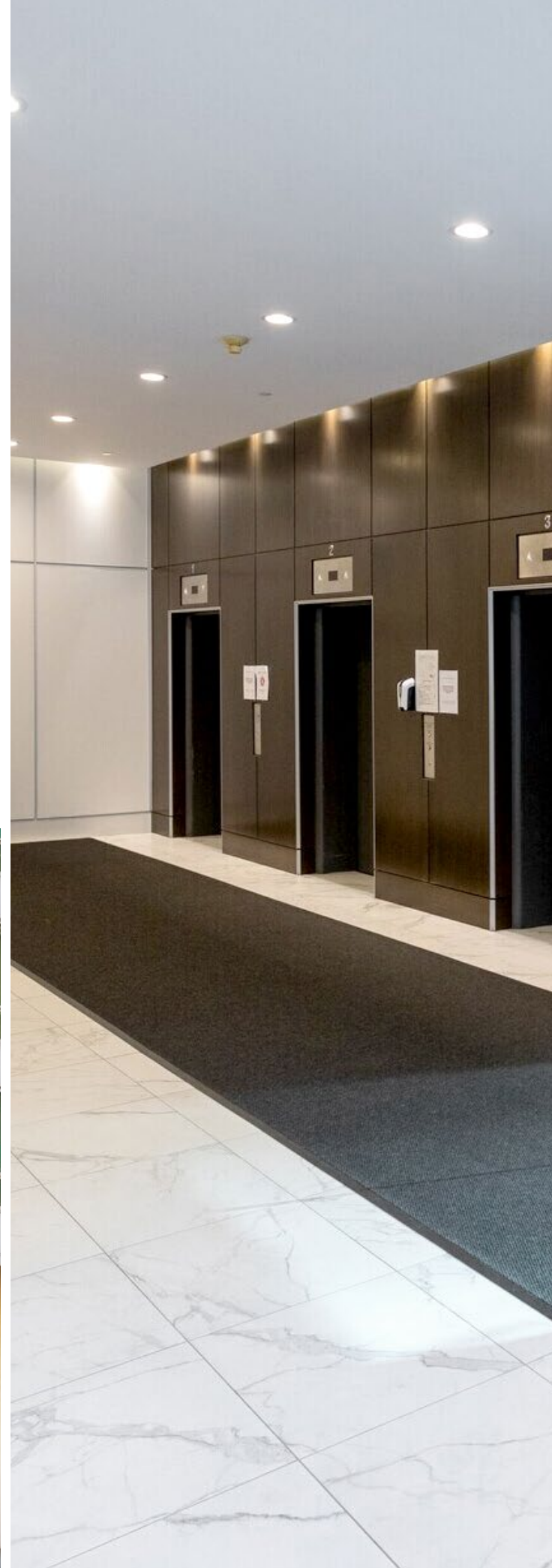


Building

1112 W Pender is a nine-storey contemporary office building in Vancouver's Central Business District. Extensively renovated in 2014, the property features a modern lobby, updated common washrooms, and secure bike storage. Additional amenities include on-site security and secure underground parking. Flexible lease terms are available, and suites can be customized to meet tenant needs, including full turnkey packages.

Location

Located at the corner of Thurlow and West Pender Street, 1112 W Pender is situated in the heart of the Central Business District, surrounded by an abundance of amenities. The building is just a 4-minute walk from Burrard Station and steps from the city's top restaurants, hotels, fitness centres, and retailers, providing outstanding convenience for both tenants and visitors.



Current Availabilities

Suite 302: 2,755 s.f. One (1) boardroom, and open plan work area.

Suite 403: 1,616 s.f. Show suite with modern improvements. New carpet, roller blinds, glass boardroom, and open plan work area.

Suite 407: 1,470 s.f. Four window offices with peekaboo ocean views.

Suite 702: 1,591 s.f. Move-in-ready, featuring one (1) private office/meeting room, a server/storage room, and open plan work area.

Suite 705: 1,750 s.f. Four (4) office, one (1) kitchenette, and open space. Recently demised.

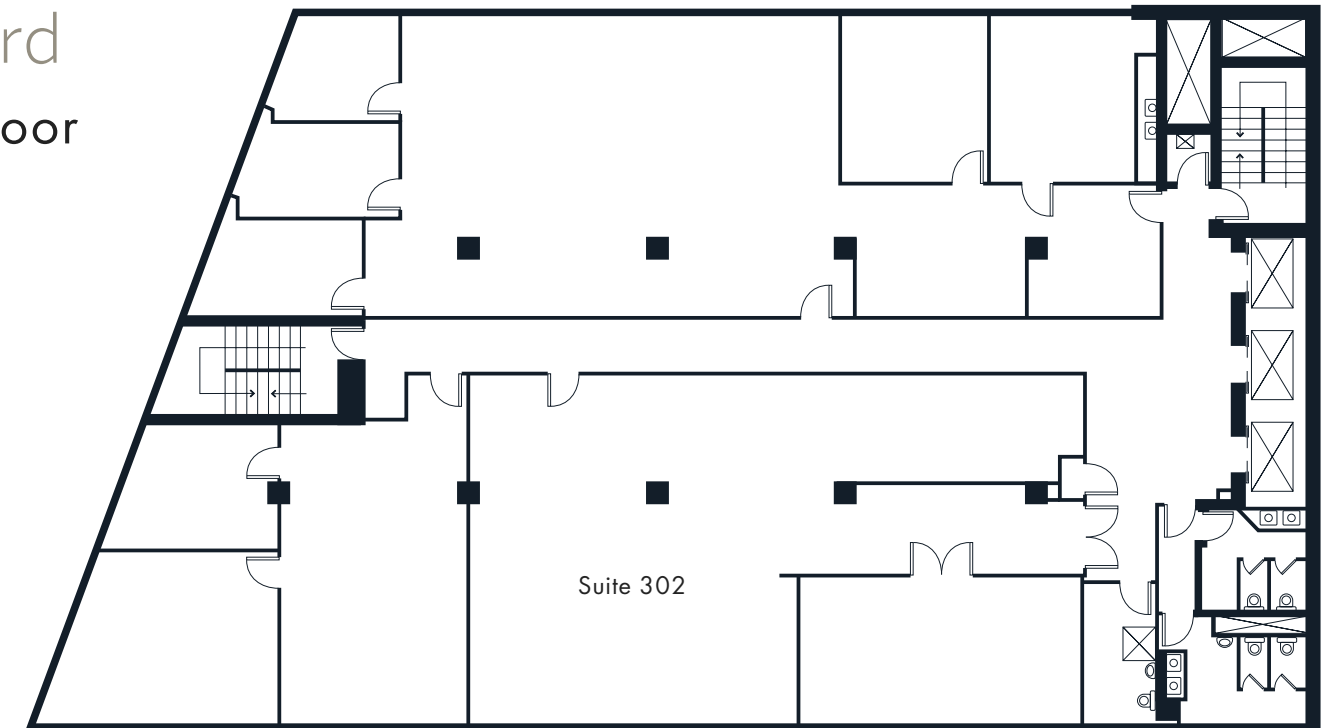
Suite 804: 4,412 s.f. Two (2) private offices/meeting rooms, one (1) boardroom, server room, two (2) kitchenettes, and reception/lounge area.

Suite 820: 791 s.f. One (1) private office/meeting room, and open plan work area.

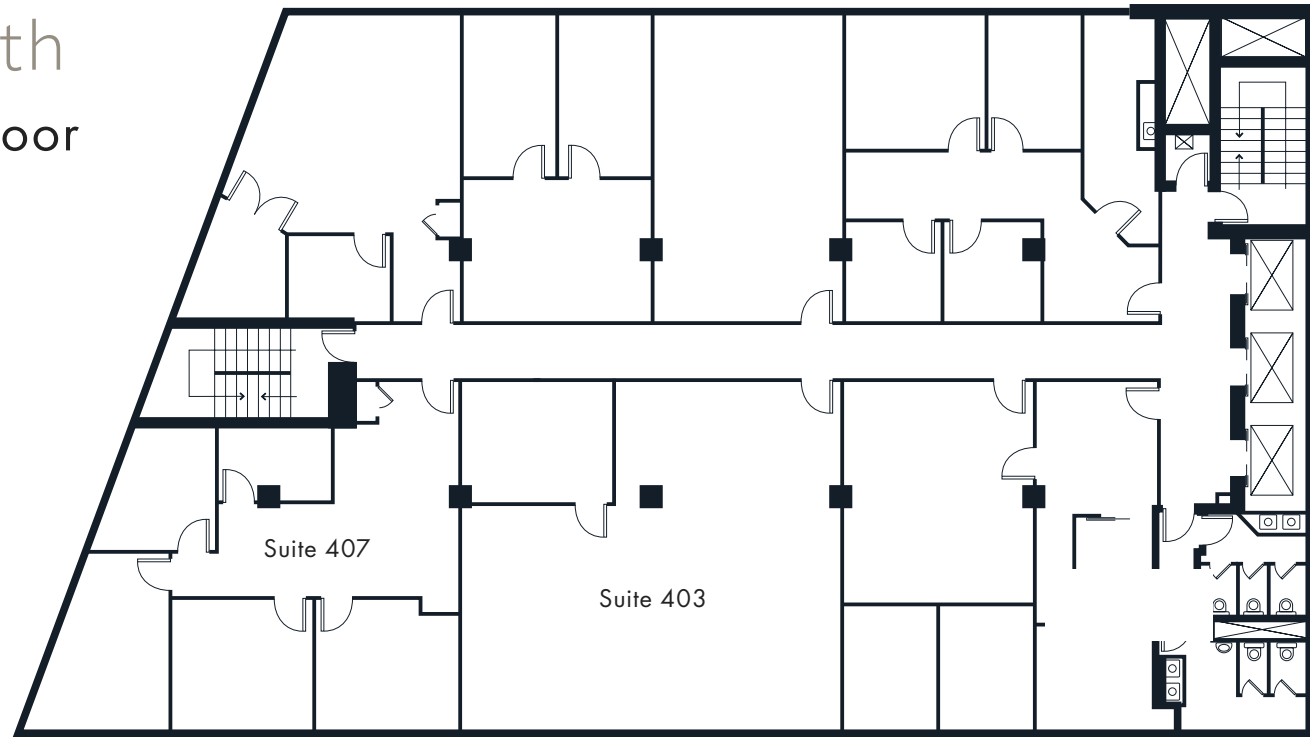
Suite 902: 812 s.f. Two (2) private offices/meeting rooms, reception area, and open plan work area.

Floor Plans

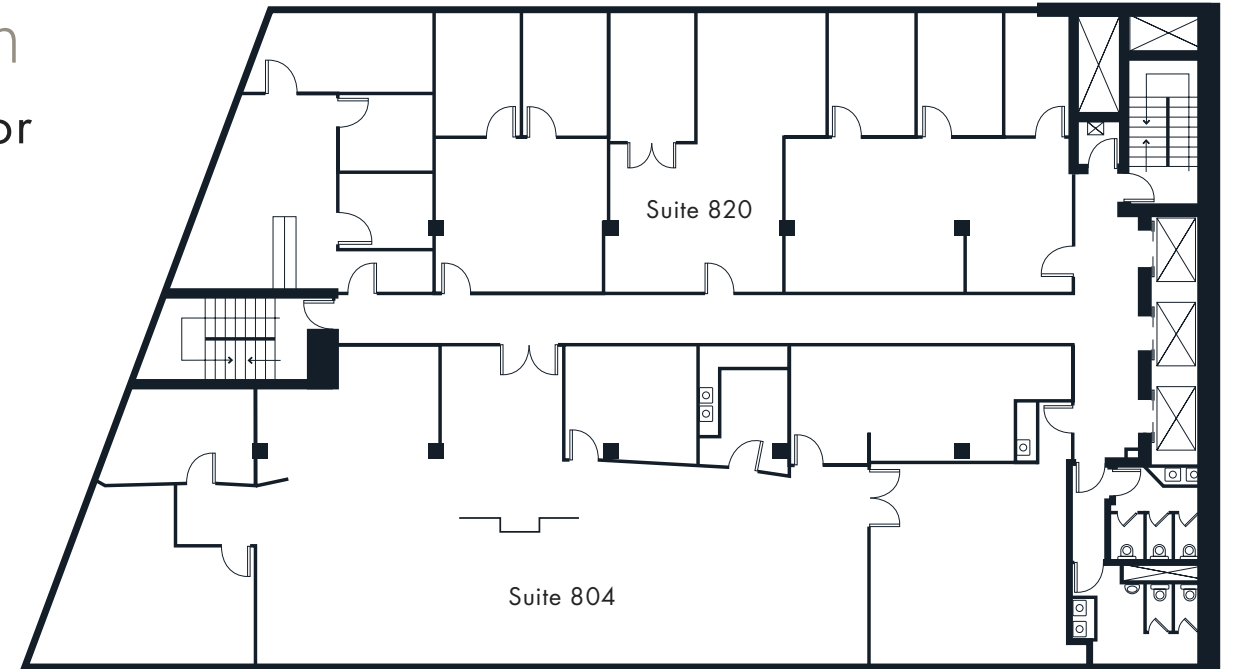
3rd
Floor



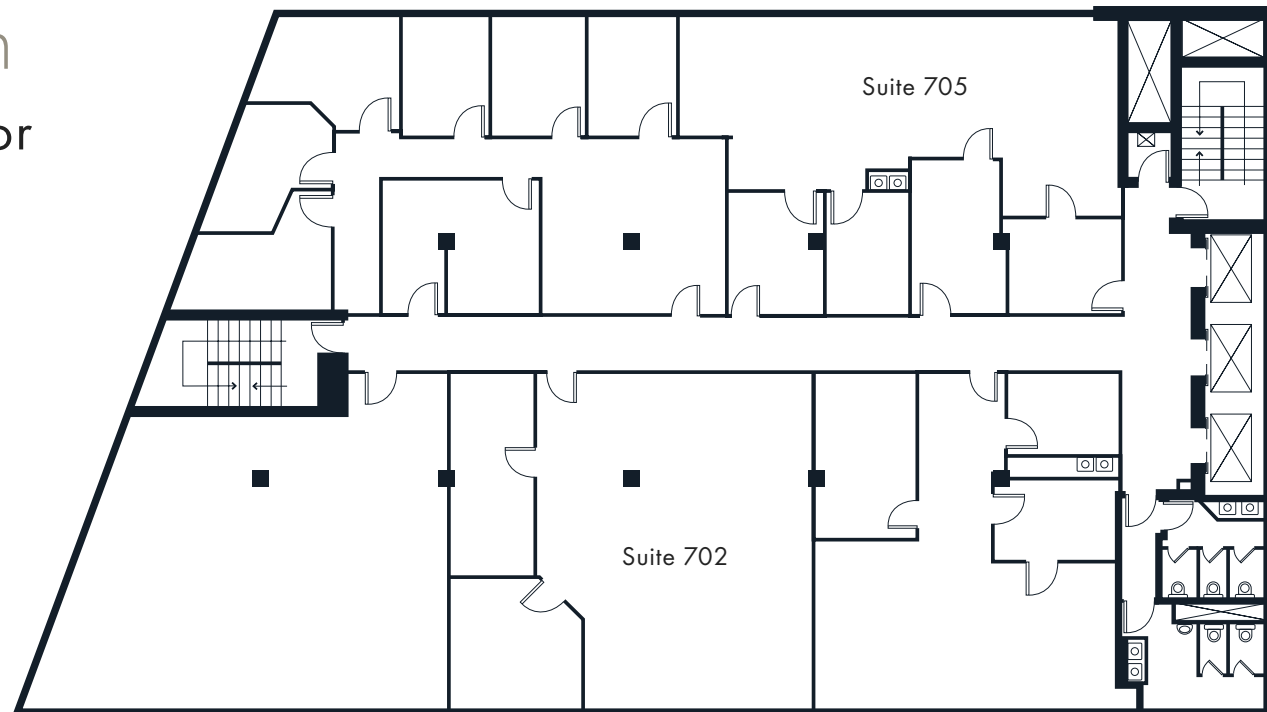
4th
Floor



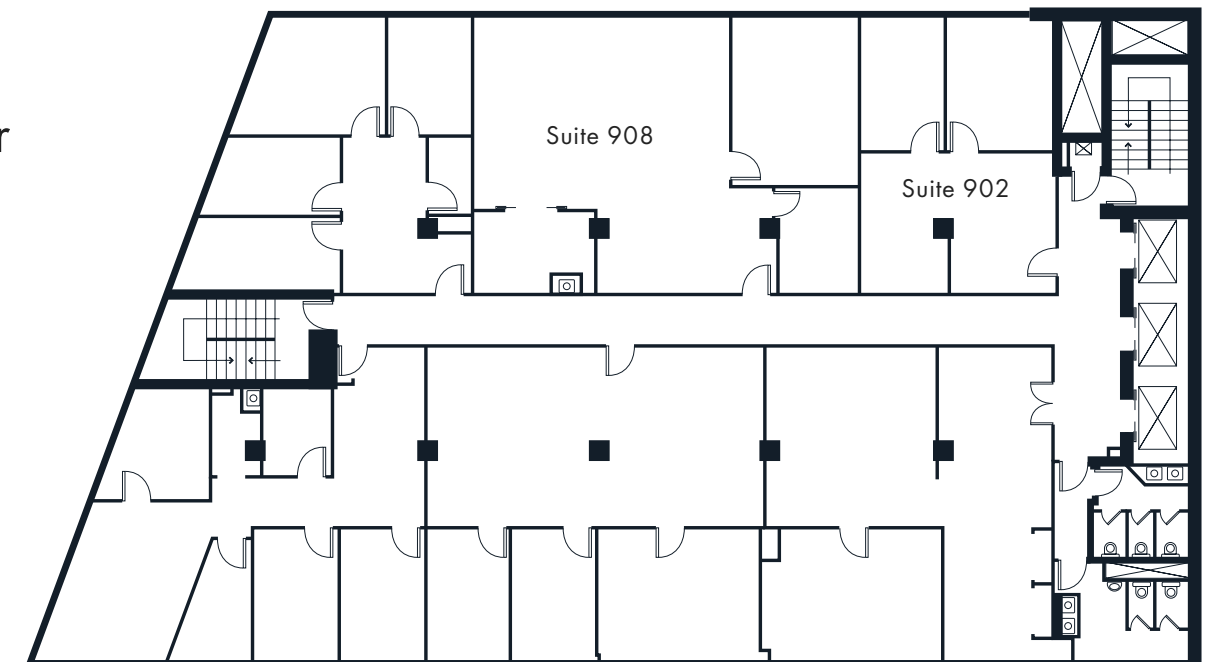
8th
Floor



7th
Floor



9th
Floor





1112 West Pender Street

Graham Hyslop

Associate

+1 604 354 7284

graham.hyslop@jll.com

Marcus Baxter

Associate

+1 604 998 6010

marcus.baxter@jll.com

Although information has been obtained from sources deemed reliable, neither Owner nor JLL makes any guarantees, warranties or representations, express or implied, as to the completeness or accuracy as to the information contained herein. Any projections, opinions, assumptions or estimates used are for example only. There may be differences between projected and actual results, and those differences may be material. The Property may be withdrawn without notice. Neither Owner nor JLL accepts any liability for any loss or damage suffered by any party resulting from reliance on this information. If the recipient of this information has signed a confidentiality agreement regarding this matter, this information is subject to the terms of that agreement.

©2025 Jones Lang LaSalle Real Estate Services, Inc. All rights reserved. | www.jll.ca |

