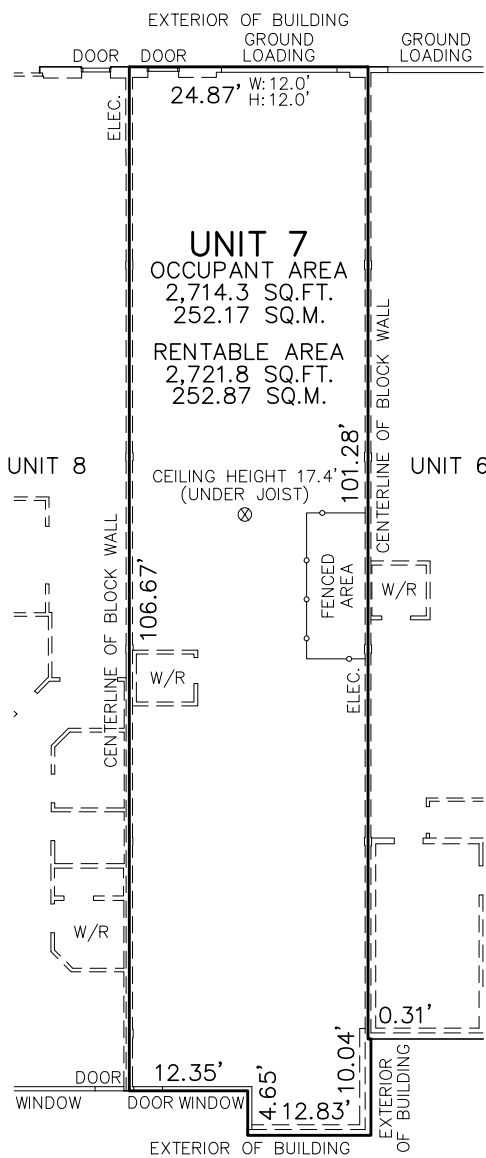
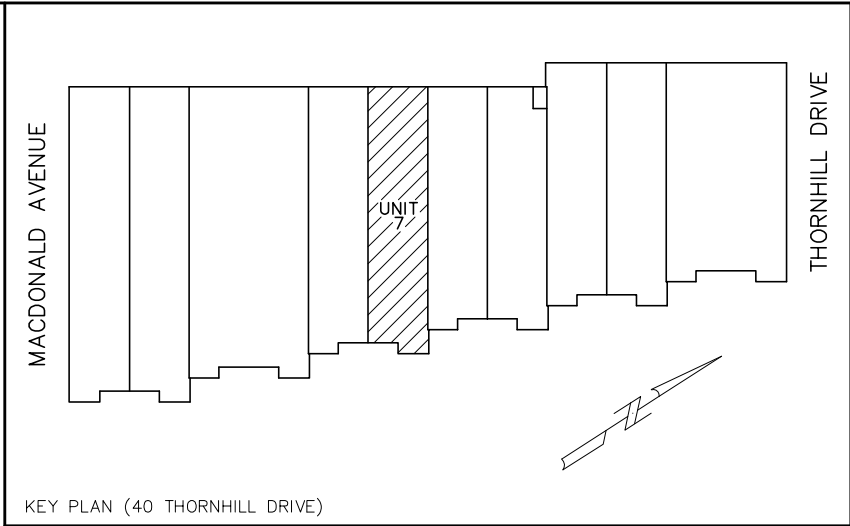


F:\1. Projects\18300-18399\18344 40 Thornhill Drive, Dartmouth (Compass)\6. Boundary-Cru\6.7 Cru Drawings\2025-12-12 Unit 7 W.O. 2\18344 Unit 7 W.O. 2 - December 12 2025.dwg

 T E N A N T N A M E



**40 THORNHILL DRIVE
 DARTMOUTH, NOVA SCOTIA
 CRU UNIT 7**

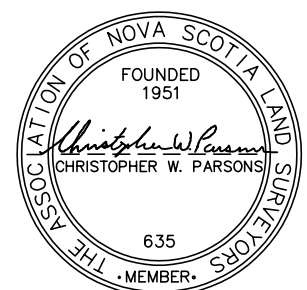
THOMPSON CONN LIMITED
 NOVA SCOTIA LAND SURVEYORS
 HALIFAX AND NORTH SYDNEY
 PHONE: (902)422-4800
 EMAIL: info@tcl.ca

FILE: 18344 W.O. 2

SCALE: 1" = 20'
 DATE: DECEMBER 17, 2025
 MEASUREMENTS WERE TAKEN ON: DECEMBER 9, 2025

LEGEND

- ⊗ LOCATION CEILING HEIGHT WAS TAKEN
- NOTE: EXIT DOOR HAS A WIDTH OF 3.0' AND HEIGHT OF 6.9'.



CERTIFIED CORRECT

1.002765 (2011)
 Z65.2-2012 IBA