

Leasing Opportunity



Unit B1
1620 Dickson Ave.
Kelowna, BC

Landmark 5

Unit B1



The Landmark District is a destination for locals built by a local team that's deeply committed to the future of our region. Strategically positioned in the centre of Kelowna, our neighbourhood has over one million square feet of retail, restaurants, and office space spread over 15 acres. Here, cutting-edge towers elevate Kelowna's skyline while thoughtful public areas provide space for leisure, connection and community events.

Leasable Area

2,510 SF

Space Type

Retail

Availability

June 2026

Building Name

Landmark 3

Property Address

B1-1620 Dickson Ave.

Parking

Free 3-hour
visitor parking

Asking Rents

Inquire

Description

Well-positioned retail space with strong visibility and patio potential. Suitable for restaurant, café, wine bar, bakery, quick-service food, boutique retail, wellness concepts, service commercial, and more.

Prime Location

Direct frontage along a main pedestrian and vehicle corridor within Landmark District, just steps from major office towers and amenities.

Outdoor Seating Area

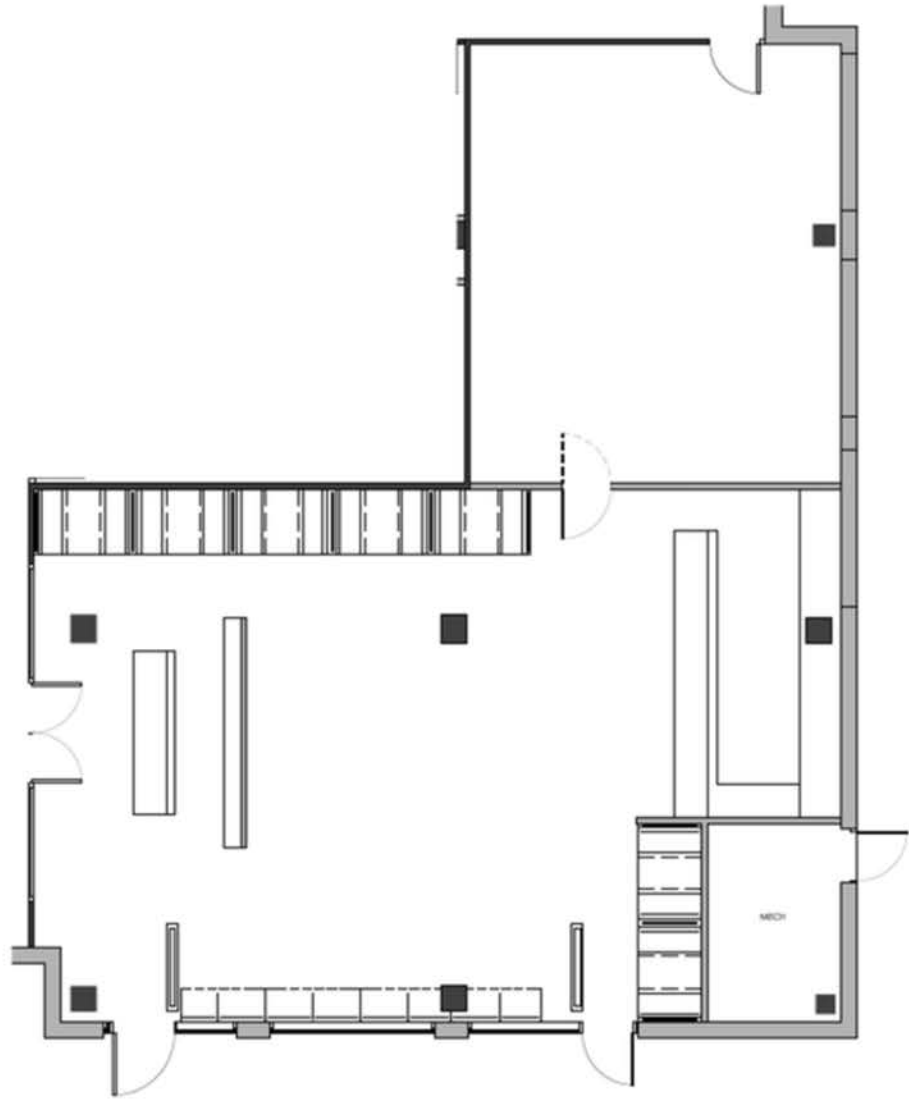
Outdoor patio space available.

Flexible Layout

Open, adaptable floor plan ready to be customized to suit your business needs.

Other

Special Amenities: Four, fully-equipped modern boardrooms available for bookings, two state of the art gyms, childcare options, on-site security and end of trip facilities.



*Floor plans and layouts are for illustrative purposes only and may vary slightly from the actual unit.

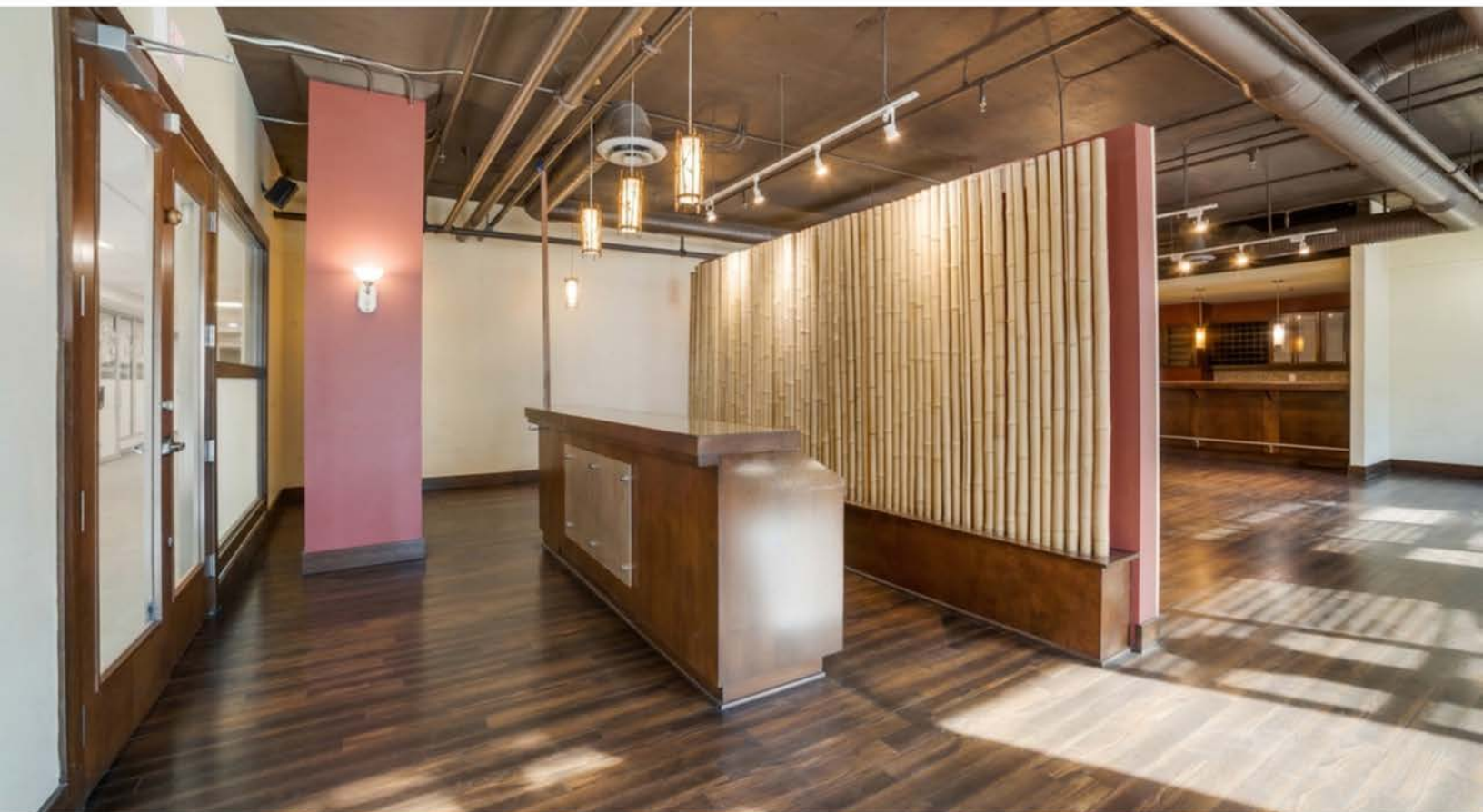
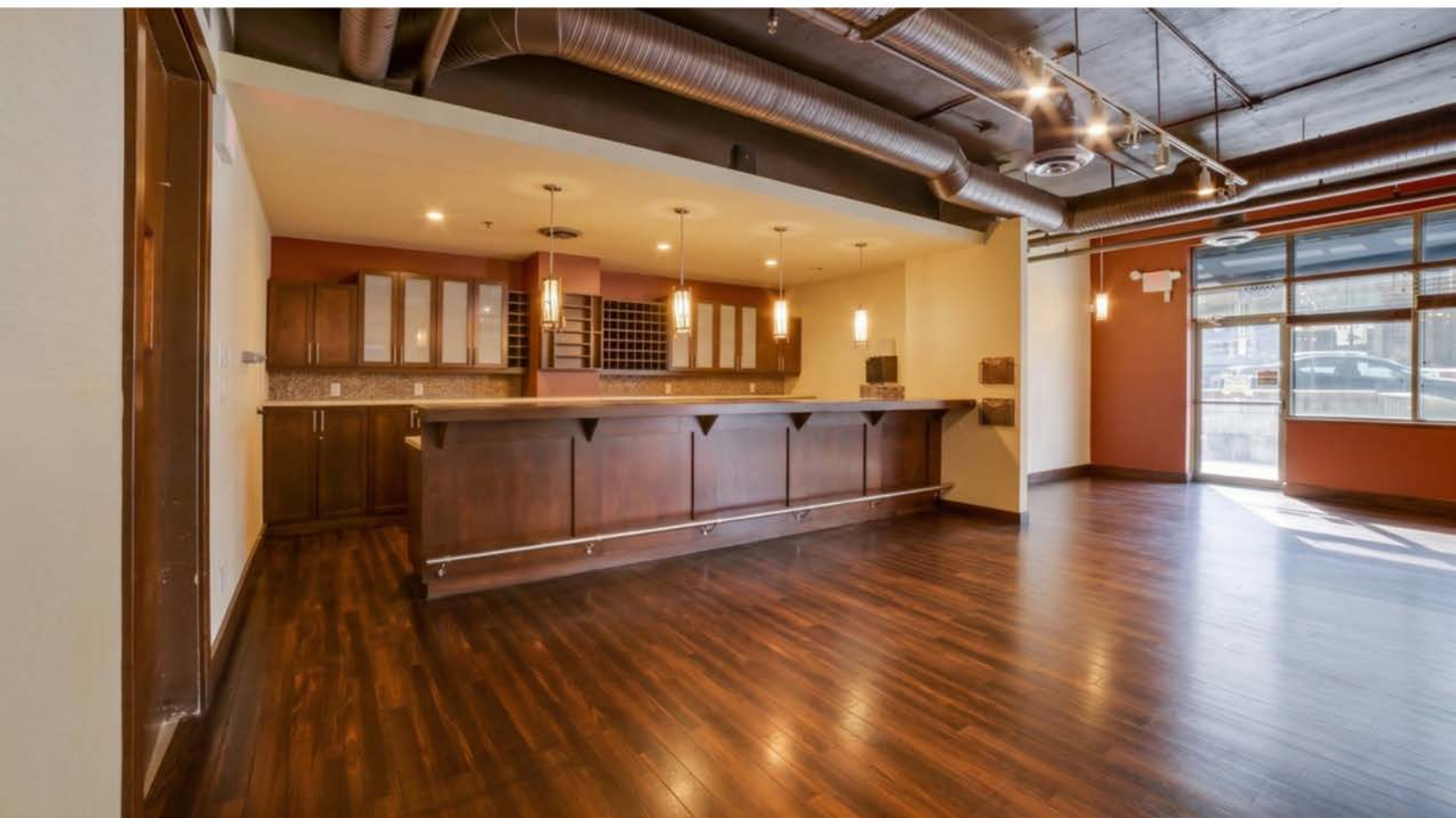


Floor Plan



Leasable Area
2,510 sq.ft







Landmark

DISTRICT



250.763.2305

General Enquiries

connect@landmarkdistrict.ca

Leasing Enquiries

leasing@stobergroup.com

Website

www.landmarkdistrict.ca

