



Discover a brand new, 484 sq ft professional office in the prestigious Flamingo Commercial Building. This bright, third-floor unit is ideal for healthcare, legal, or financial services and includes one designated parking space with optional EV charging. Situated in the heart of downtown Surrey, it offers unparalleled access to major amenities. Contact the listing agent for a private viewing.

Ameen Awla PREC\*  
Royal LePage Commercial  
[ameenawla@royallepagecommercial.com](mailto:ameenawla@royallepagecommercial.com)  
(778) 895-0196



**Property Details**

Office 484 sqft

**Zoning**

CD Zoning  
Ideal for Medical Office, Dental Office, Immigration, Accounting and many more.

**Lease Rate**

Contact Listing Agent

**Availability**

Vacant

**Opportunity**

Presenting a premium 484 sq. ft. office suite in the newly completed Flamingo Commercial Building, ideally located in the heart of Downtown Surrey — one of British Columbia’s fastest-growing business and transit hubs.

Property Overview

**Address: 301-10767 Whalley Blvd, Surrey**

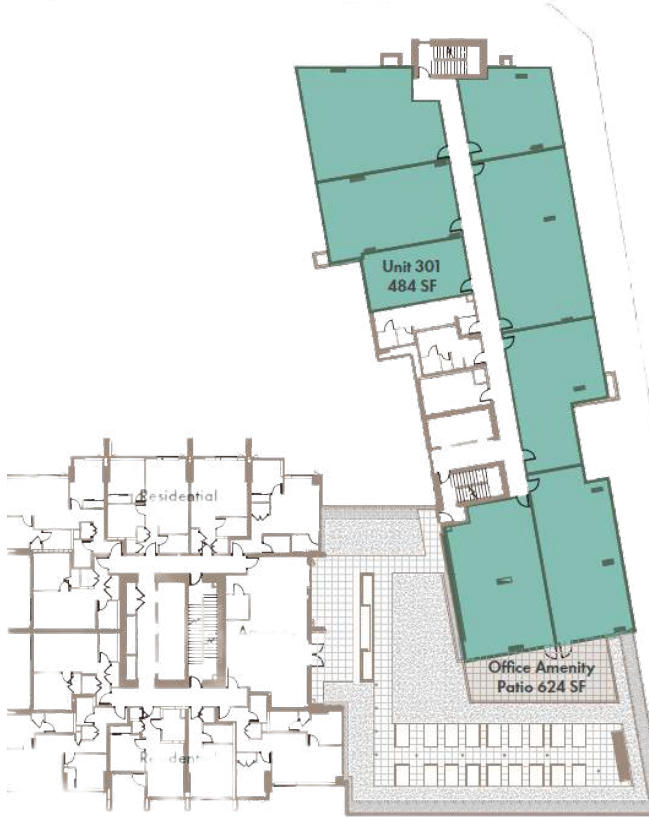
- Unit Size: 484 sq. ft. (approx.)
- Floor: 3rd Floor – Bright, open-concept space with floor-to-ceiling windows
- Parking: 1 designated parking stall included
- EV Charging: Optional electric vehicle charging available
- Storage Locker
- Availability: Immediate possession

Highlights

- Brand new construction with modern design, high ceilings, and abundant natural light

**Ideal for professionals and service-oriented businesses, including:**

- Dentists & Medical Practitioners
- Registered Massage Therapists (RMTs)
- Accountants & Financial Advisors
- Immigration Consultants & Legal Professionals
- Therapists, Designers, or Tech Startups
- Prime location surrounded by major developments, offices, and residential towers
- Walking distance to Surrey Central SkyTrain Station, City Hall, SFU Surrey, and major amenities
- Professional setting with excellent exposure and accessibility for clients and staff





# WHERE ACCESSIBILITY & CONVENIENCE INTERSECT

Located at one of the most significant intersections in the city with unparalleled proximity to the gateway of Surrey City Centre, Flamingo Block is positioned near many landmarks and amenities – making this a target destination for any growing business. A growing SkyTrain network connects seamlessly to destinations throughout the Lower Mainland.

## RESTAURANTS / PUBS

- 1 Subway
- 2 Tim Hortons
- 3 Big Star Sandwich Co.
- 4 Nemesis Coffee
- 5 Dominion Bar + Kitchen
- 6 Starbucks
- 7 Burger King
- 8 Domino's Pizza
- 9 An Pho Vietnamese Restaurant
- 10 Skye Avenue Kitchen & Lounge
- 11 White Spot Central City
- 12 Boston Pizza Central City
- 13 Combine Cafe & Bar
- 14 Browns Socialhouse
- 15 Mucho Burrito

## SHOPPING

- 1 Shoppers Drug Mart
- 2 Nesters Market
- 3 BC Liquor
- 4 Pharmasave
- 5 Rexall
- 6 Lucky Supermarket
- 7 Dollarama
- 8 London Drugs
- 9 Guildford Town Centre
- 10 Walmart
- 11 Central City Shopping Centre
- 12 Staples
- 13 T&T Supermarket

## FINANCIAL INSTITUTIONS

- 1 TD Bank
- 2 Vancity
- 3 Scotiabank
- 4 RBC
- 5 BMO
- 6 CIBC
- 7 Coast Capital Savings

## TRANSIT

- 1 Gateway SkyTrain Station
- 2 Surrey Central SkyTrain Station
- 3 King George SkyTrain Station
- 4 Future SkyTrain to Langley

## EDUCATION

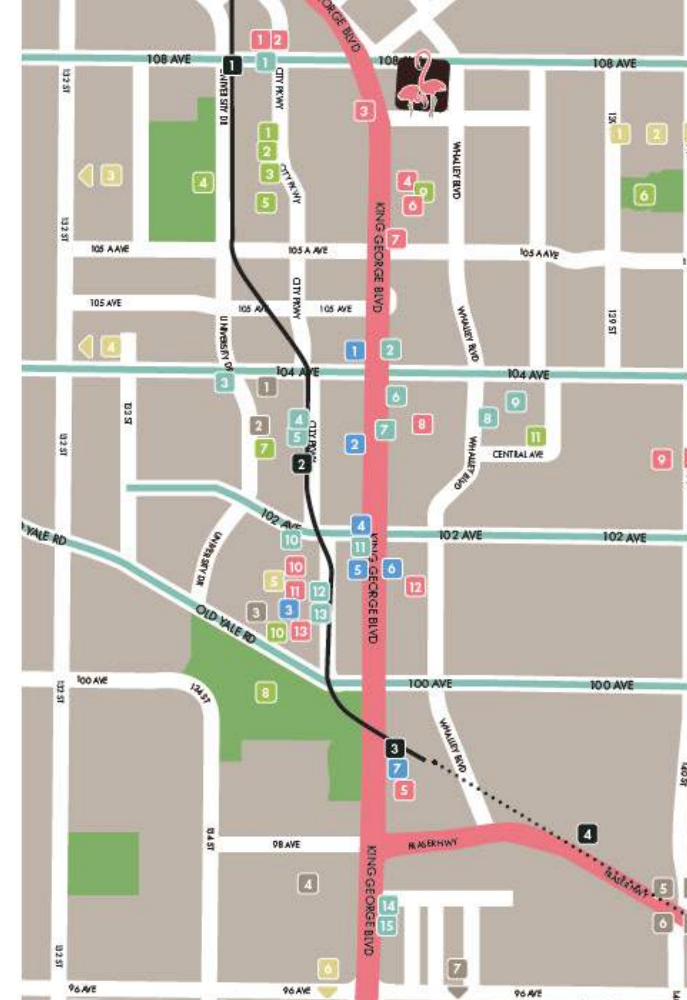
- 1 Forsyth Road Elementary School
- 2 Guildford Park Secondary School
- 3 K.B. Woodward Elementary
- 4 Kwantlen Park Secondary School
- 5 Simon Fraser University
- 6 Queen Elizabeth Secondary School

## CIVIC SERVICES

- 1 Surrey City Hall
- 2 Library - City Centre Branch
- 3 Canada Post
- 4 Canada Revenue Agency
- 5 Jim Pattison Outpatient Centre
- 6 BC RCMP Divisional Headquarters
- 7 Surrey Memorial Hospital

## PARKS & RECREATION

- 1 Chuck Bailey Recreation Centre
- 2 Tom Binnie Park
- 3 Chuck Bailey Skate Park
- 4 Whalley Athletic Park
- 5 BC Lions Training & Business Centre
- 6 Forsyth Park
- 7 North Surrey Recreation Centre
- 8 Holland Park
- 9 Planet Fitness
- 10 Club 16 Trevor Linden Fitness
- 11 Fitness World



Contact for more information

Ameen Awla PREC\*

Royal LePage Commercial

ameenawla@royallepagecommercial.com

(778) 895-0196

Unit: 306, 15300 54A Avenue, Surrey

BC, Canada V3S 8R7

