

An aerial photograph of a coastal town, likely White Rock, BC. The image shows a mix of residential houses and commercial buildings. A red callout bubble with the text "SUBJECT PROPERTY" points to a specific building located between a parking lot and a residential street. The building is a two-story structure with a flat roof and large windows. The surrounding area includes a beach, a railway line, and a road with parked cars.

SUBJECT
PROPERTY

FOR LEASE

FULL SERVICE RESTAURANT

15073 – 15077 Marine, White Rock, BC

Prime Beachfront Location!

Razi Mohamed*

Vice President

778.879.9407

Razi.Mohamed@macdonaldcommercial.com

**Personal Real Estate Corporation*

Macdonald
COMMERCIAL

— member of —

CORFAC
INTERNATIONAL

15073 – 15077 MARINE DRIVE

White Rock, BC

OPPORTUNITY

Macdonald Commercial is pleased present the opportunity to Lease improved full-service restaurant.

LOCATION

The subject property is located along Marine Drive overlooking the White Rock beach and mere steps from the famous promenade and pier. The area is developed with a mixture of commercial and residential uses; it is extremely sought after, and benefits from nearby transit, waterfront views and dining experience.



PROPERTY INFORMATION

CIVIC ADDRESS

10573 – 15077 Marine Drive White Rock

LEGAL ADDRESS

LOT 23 & 24, BLOCK 9, PLAN NWP525, SECTION 10, TOWNSHIP 1, NEW WESTMINSTER LAND PID: 011-635-592 & 011-635-606

SPACE SIZE

2,100 sq. ft. (Approx.)

LOT DIMENSION

60' feet Frontage x 66' feet

LAND SIZE

3,972 Sq Ft

PARKING

Two (2)

CURRENT ZONING

CR-3 (Contact the listing agent for a copy of the zoning bylaws.)

ADDITIONAL RENT

\$16 PSF

ASKING LEASE RATE

\$52 PSF

INTERIOR PHOTOS



Full service restaurant

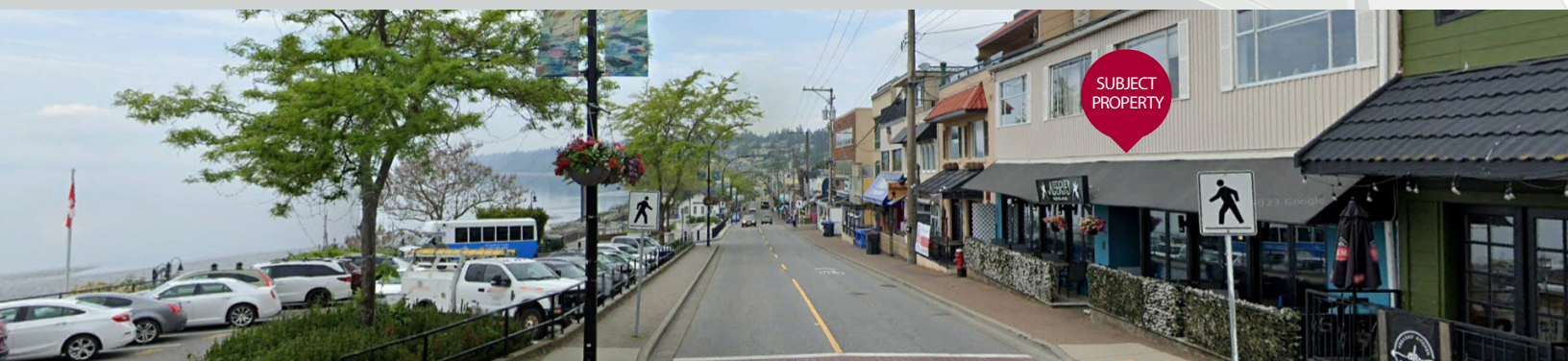
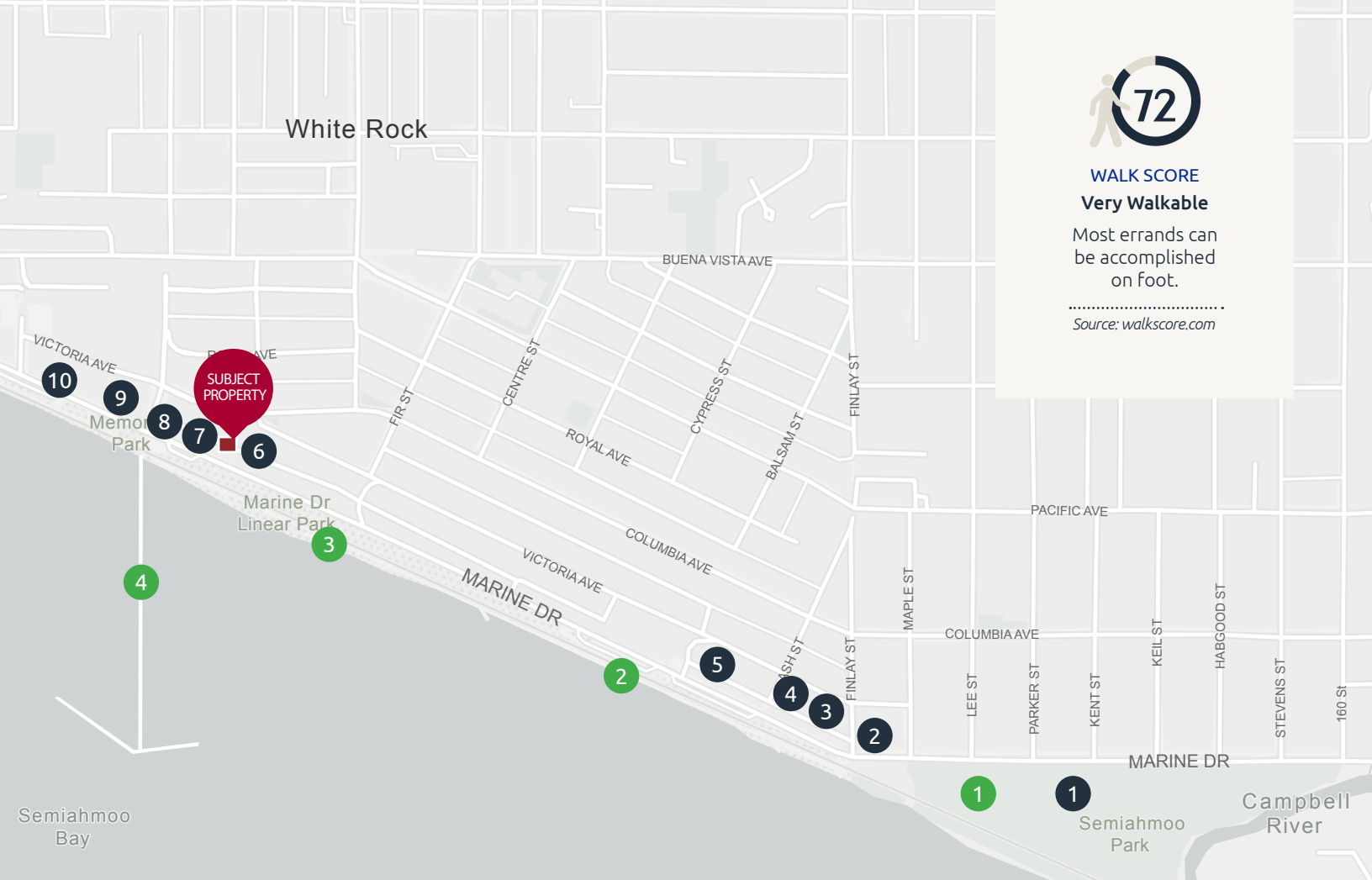
Waterfront property with great beach view



With built in infrastructure

Commercial Kitchen





AMENITIES

● SHOPPING & SERVICES

1. Washington Avenue Grill
2. Ocean Promenade Hotel
3. Leieve Tea
4. Montgomery's Cottage Lunch
5. Zapoteca
6. La Amore cafe & bites
7. Dock's Fish and Chips
8. Maya's Ice Cream
9. Uli's Restaurant
10. White Rock Museum & Archives

● PARKS

- A. Semiahmoo Park
- B. East Beach
- C. The White Rock
- D. White Rock Pier

Razi Mohamed*

Vice President

778.879.9407

Razi.Mohamed@macdonaldcommercial.com

*Personal Real Estate Corporation

Macdonald
COMMERCIAL

Although this information has been received from sources deemed reliable, we assume no responsibility for its accuracy, and without offering advice, make this submission subject to prior sale or lease, change in price or terms and withdrawal without notice. Macdonald Commercial RES is hired by the landlord to lease the space. Any existing equipment and chattels is not a part of this offering and will need to be discussed with the Landlord