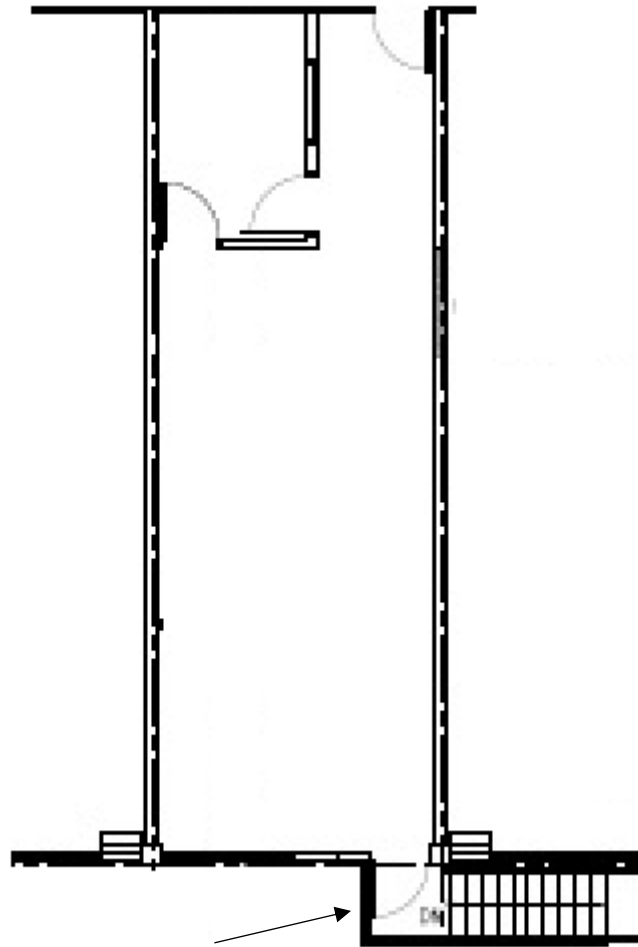
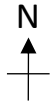


2323 Quebec Street, Vancouver, BC



Designated exterior stairwell.



Suite 222 790 square feet

Description: Light Industrial with wholesale dealer use. Open space with one office and designated exterior stairwell. Contiguous with suite 220 totaling 1,580 sq ft.

This is a representation for marketing purposes only and should not be used for measurements of any kind. This drawing is not to scale.

TPMG CAPITAL

Real Estate Acquisition
Management
Leasing