

7380 KING GEORGE BLVD.,  
SURREY, B.C.

# NEWTON VILLAGE

## SECOND FLOOR



AREA CERTIFICATION: NOVEMBER 7, 2019

As evidenced by our signature and in accordance with the ANSI/BOMA Z65.1-2010 Office Buildings: Standard Methods of Measurement, we hereby certify the Rentable Area of this building to be 14,138 Square Feet.

*CRAIG W. NICHOLS*  
MEASURE MASTERS



1" = 5'  
SCALE

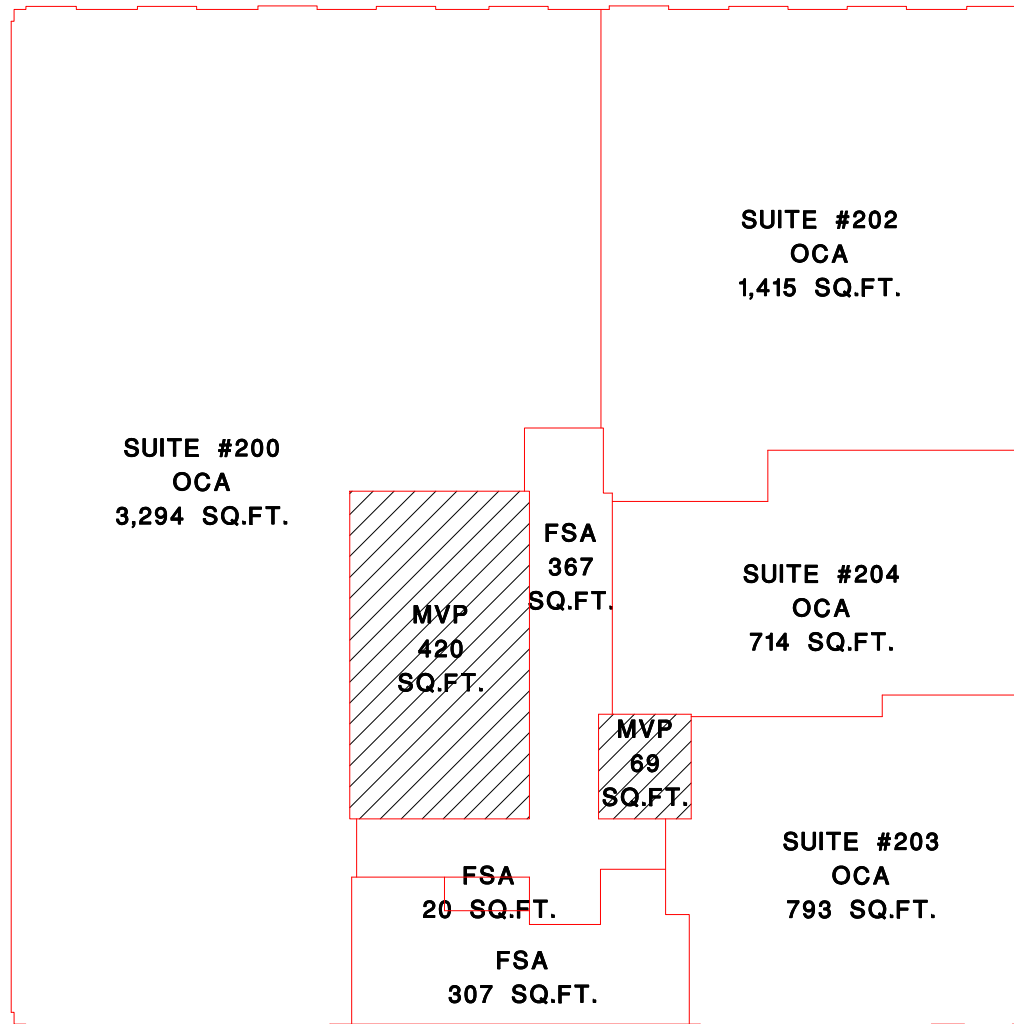
DRAWN BY: CN  
DATE: NOVEMBER 2019  
REVISED:

**MEASURE MASTERS**  
SURREY/WHITE ROCK  
(604) 539-0285  
surrey@measuremasters.ca

7380 KING GEORGE BLVD.,  
SURREY, B.C.

# NEWTON VILLAGE

## SECOND FLOOR



AREA CERTIFICATION: NOVEMBER 7, 2019

As evidenced by our signature and in accordance with the ANSI/BOMA Z65.1-2010 Office Buildings: Standard Methods of Measurement, we hereby certify the Rentable Area of this building to be 14,138 Square Feet.

INTERIOR GROSS AREA 7,399 SQ.FT.

  
CRAIG W. NICHOLS  
MEASURE MASTERS



1" = 5'  
SCALE

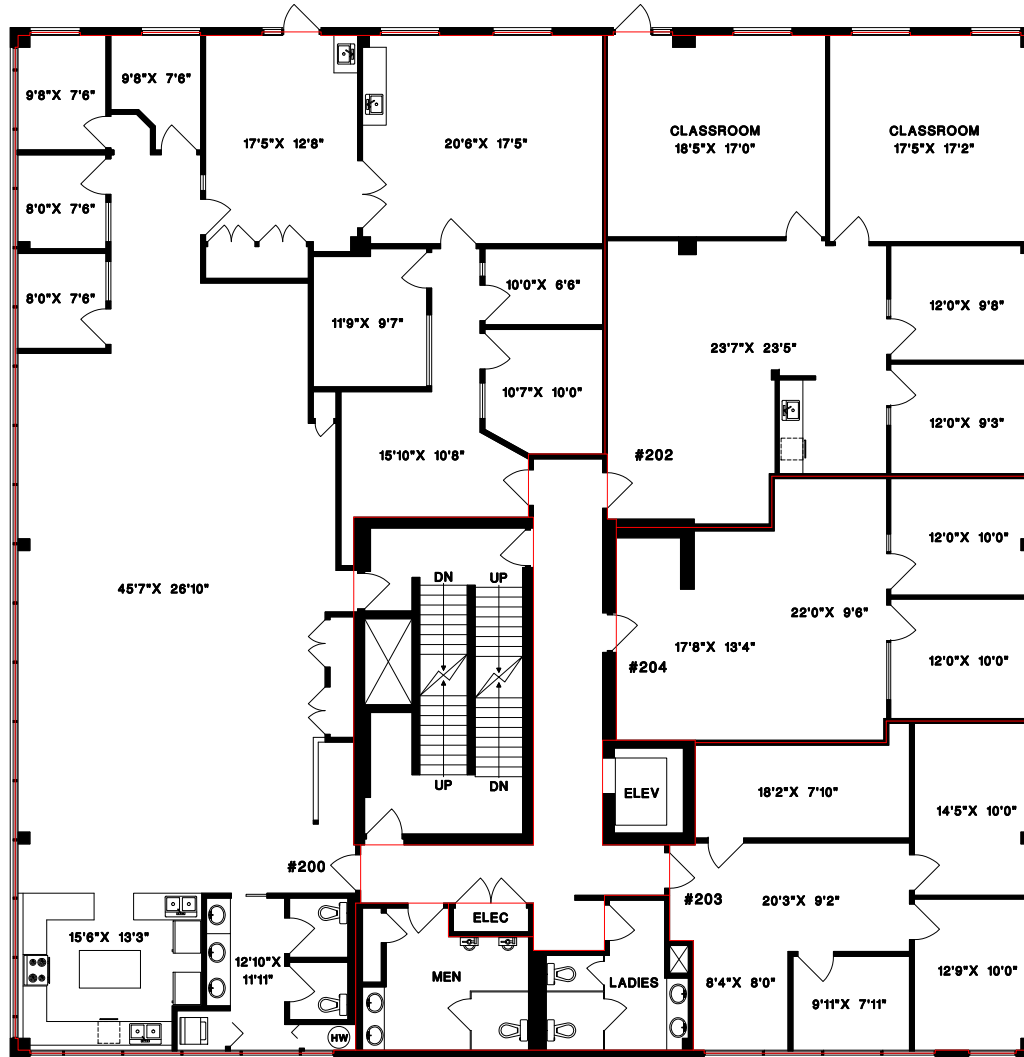
DRAWN BY: CN  
DATE: NOVEMBER 2019  
REVISED:

 MEASURE MASTERS™  
SURREY/WHITE ROCK  
(604) 539-0285  
surrey@measuremasters.ca

7380 KING GEORGE BLVD.,  
SURREY, B.C.

# NEWTON VILLAGE

## SECOND FLOOR



AREA CERTIFICATION: NOVEMBER 7, 2019

As evidenced by our signature and in accordance with the ANSI/BOMA Z65.1-2010 Office Buildings: Standard Methods of Measurement, we hereby certify the Rentable Area of this building to be 14,138 Square Feet.

*CRAIG W. NICHOLS*  
MEASURE MASTERS



1" = 5'  
SCALE

DRAWN BY: CN  
DATE: NOVEMBER 2019  
REVISED:

**MEASURE MASTERS**  
SURREY/WHITE ROCK  
(604) 539-0285  
surrey@measuremasters.ca

7380 KING GEORGE BLVD.,  
SURREY, B.C.

# NEWTON VILLAGE

## SECOND FLOOR



AREA CERTIFICATION: NOVEMBER 7, 2019

As evidenced by our signature and in accordance with the  
ANSI/BOMA Z65.1-2010 Office Buildings: Standard Methods of Measurement,  
we hereby certify the Rentable Area of this building to be 14,138 Square Feet.



CRAIG W. NICHOLS  
MEASURE MASTERS



1" = 5'  
SCALE

DRAWN BY: CN  
DATE: NOVEMBER 2019  
REVISED:

