



# FOR LEASE HOLLAND PLAZA

Sizes Ranging From 2,755 - 12,005 SF Available

10939 - 120 Street NW  
Edmonton, Alberta

**Karina Lopez**  
Senior Associate  
780-994-3820  
karina.lopez@cwedm.com

**Devan Ramage**  
Associate  
780-420-1177  
devan.ramage@cwedm.com

**CUSHMAN & WAKEFIELD**  
Edmonton  
Suite 2700, TD Tower  
10088 - 102 Avenue  
Edmonton, AB T5J 2Z1  
[www.cwedm.com](http://www.cwedm.com)

# PROPERTY HIGHLIGHTS

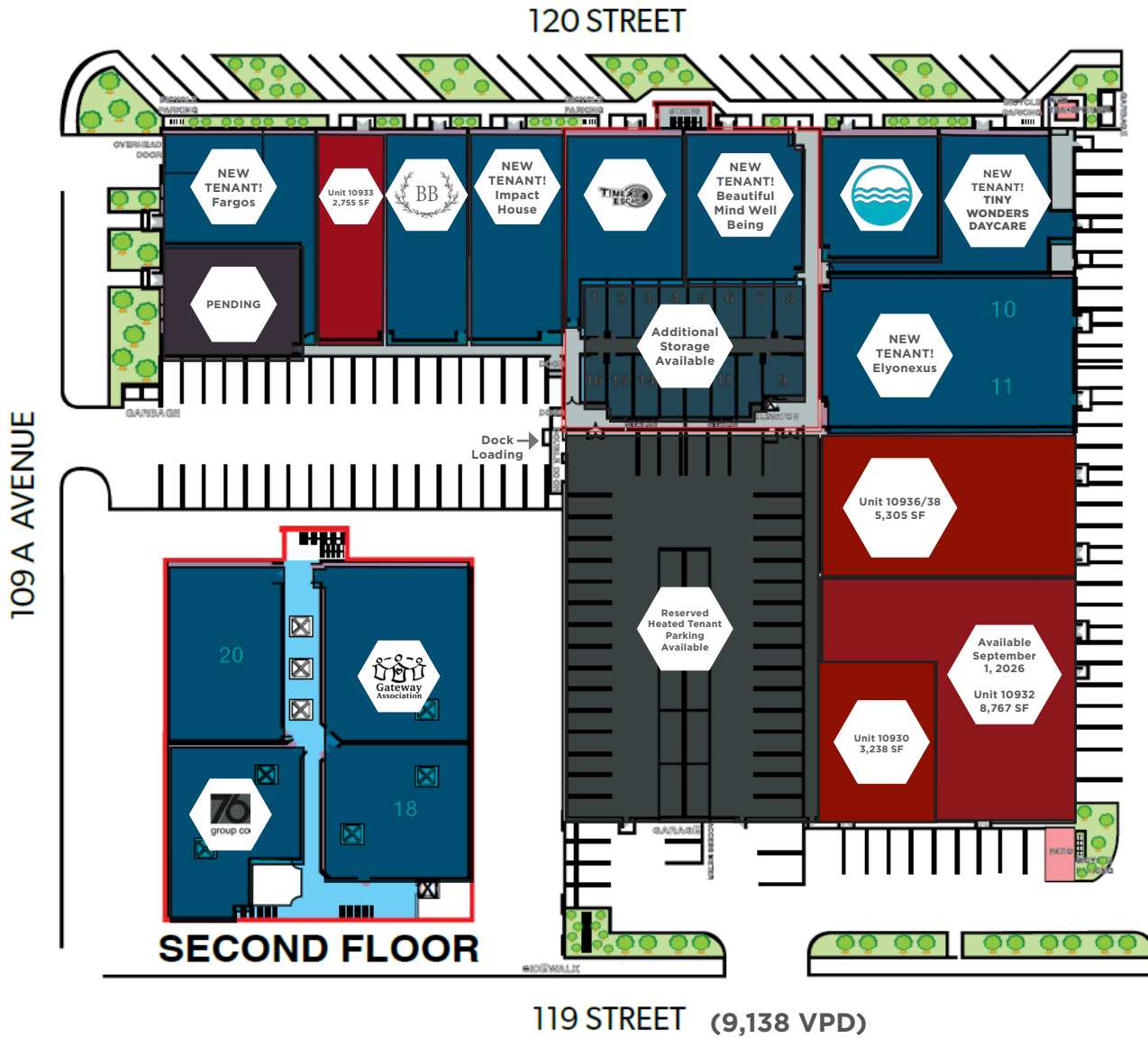
- Completely renovated and unique retail development strategically located in the heart of the Queen Mary Park Neighborhood.
- Come join a wide variety of unique operators including: The Bridal Boutique, Holland Liquor Store, Modern Gravity Float Studio, and Time Escape.
- Strategically located along 120th Street.
- Ample on site parking and multiple access points.
- High exposure pylon signage opportunity available.
- Heated and reserved tenant parking available.
- Over 12,259 residents within a 1km radius.
- (BE) Business Employment Zoning allows for a wide variety of uses.
- Lease Rate: Contact Listing Agent.
- Additional Rent: \$11.57 per SF (est. 2026).



## PROPERTY DETAILS

<b>Municipal Address:</b>	10939 - 120 Street NW
<b>Legal Description:</b>	Lot B, C, Block 19, Plan 3256HW
<b>Zoning:</b>	(BE) Business Employment Zoning
<b>Neighbourhood:</b>	Queen Mary Park

# SITE PLAN



## DEMOGRAPHICS



### POPULATION

1km	3km	5km
12,259	91,752	206,648



### AVERAGE INCOME

1km	3km	5km
\$96,499	\$98,802	\$103,989



### HOUSEHOLDS

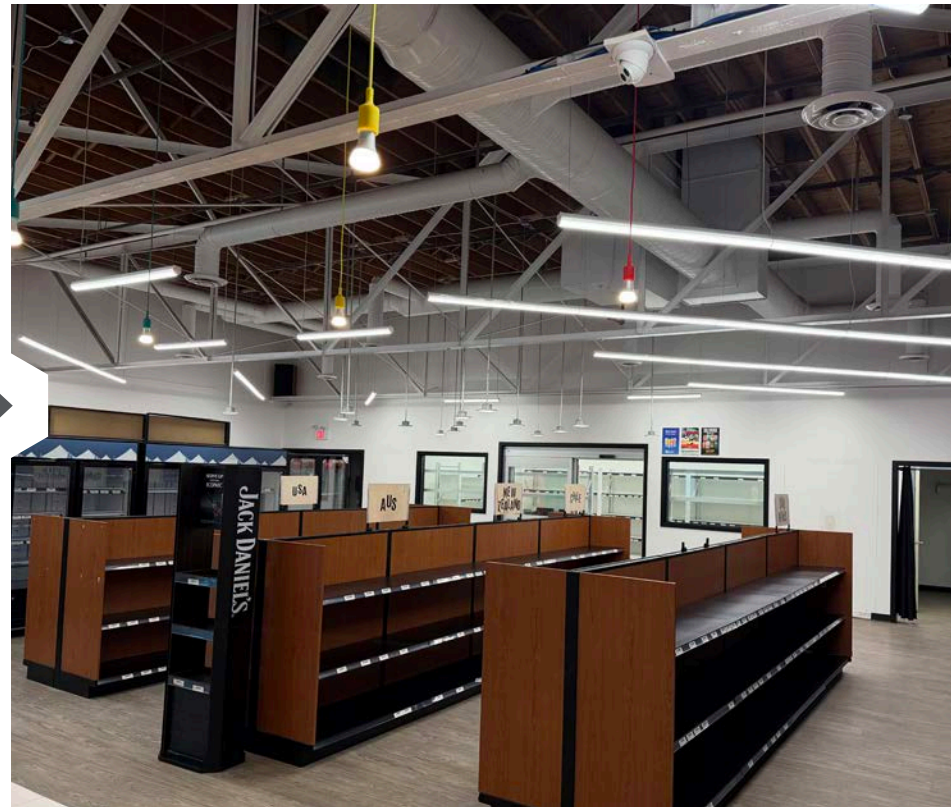
1km	3km	5km
6,325	47,262	98,475

PROPERTY PHOTOS

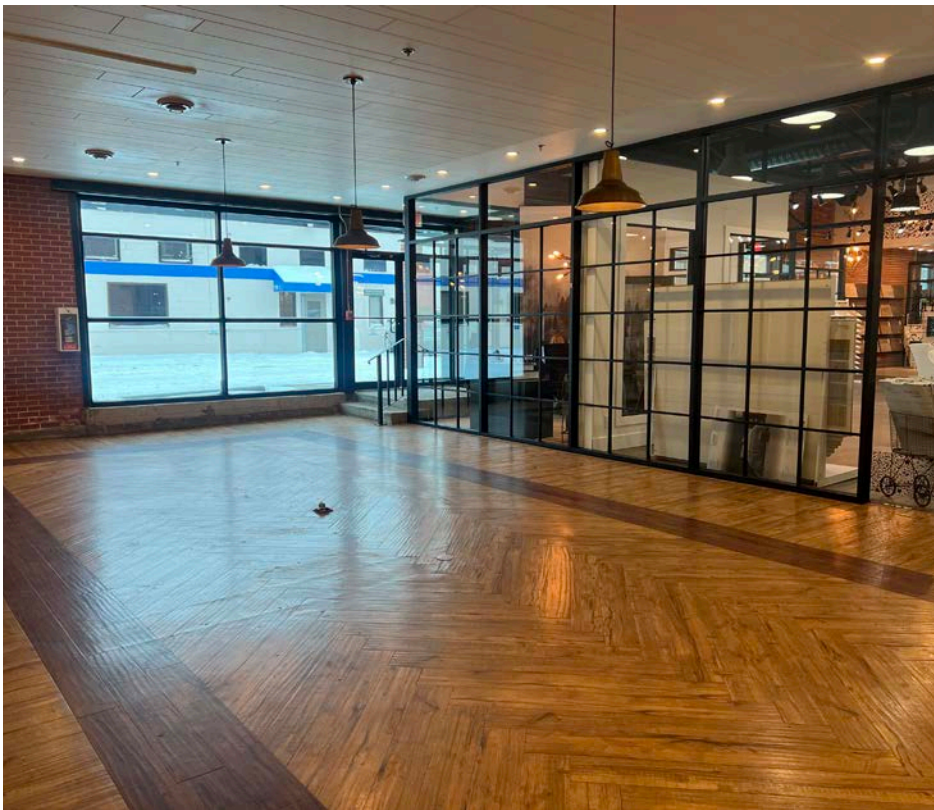
UNIT 10933: 2,755 SF



UNIT 10930: 3,238 SF



UNIT 10936 - 10938: 5,305 SF



PROPERTY PHOTOS

PROPERTY PHOTOS

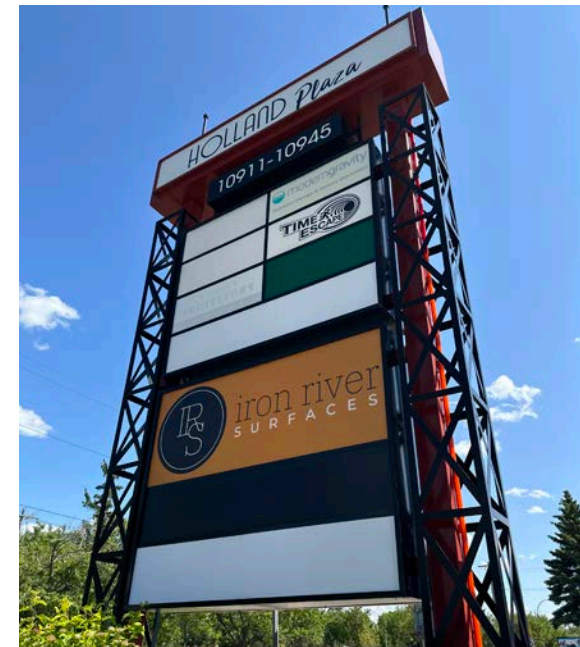
UNIT 11998: LEASED!



UNIT 11996: PENDING



UNIT 10940: 6,711 SF LEASED!



**CUSHMAN & WAKEFIELD**  
Edmonton

**Karina Lopez**  
Senior Associate  
780-994-3820  
[karina.lopez@cwedm.com](mailto:karina.lopez@cwedm.com)

**Devan Ramage**  
Associate  
780-420-1177  
[devan.ramage@cwedm.com](mailto:devan.ramage@cwedm.com)

Cushman & Wakefield Edmonton is independently owned and operated / A Member of the Cushman & Wakefield Alliance. No warranty or representation, express or implied, is made to the accuracy or completeness of the information contained herein, and same is submitted subject to errors, omissions, change of price/rental or other conditions, withdrawal without notice, and to any special listing conditions imposed by the property owner(s). As applicable, we make no representation as to the condition of the property (or properties) in question. March 2026