

# FOR SALE

# THE HIVE & 109 GARDEN

8630-8642 - 108A STREET & 8715 - 109 STREET, EDMONTON, AB

5,787 SF STANDALONE RESTAURANT PROPERTY & 13,127 SF FUTURE DEVELOPMENT SITE



Marcus & Millichap

**Casey McClelland**  
Senior Managing Director  
Casey.McClelland@  
MarcusMillichap.com

**Nicholas Cryans**  
Associate  
NCryans@  
ipammi.ca

**Kevin Glass**  
Director  
Kevin.Glass@  
MarcusMillichap.com

**Mike Hoffert**  
Director  
Mike.Hoffert@  
MarcusMillichap.com

# OVERVIEW / THE HIVE & 109 GARDEN

8630-8642 - 108A STREET & 8715 - 109 STREET, EDMONTON, AB

## THE OPPORTUNITY

The Hive represents a rare four-lot land assembly located in Edmonton's Garneau neighbourhood, zoned for high-density residential development. Positioned immediately adjacent to the University of Alberta, the site offers exceptional long-term redevelopment potential in one of the city's most sought-after urban nodes. Surrounded by grocery stores, cafés, restaurants, the North Saskatchewan River Valley, and Whyte Avenue, the location provides unmatched walkability, connectivity, and enduring demand driven by students, professionals, and institutional anchors.

109 Garden Bistro & Brunch is a fully leased, single-storey restaurant property situated directly along 109 Street in the heart of Garneau. Located minutes from the University of Alberta, Whyte Avenue, the River Valley, and major transit routes, the property benefits from exceptional visibility and steady commercial activity. The Mixed Use (MU) zoning provides long-term flexibility, and the existing triple-net lease offers purchasers secure, predictable income. Surrounded by dense residential development, retail, hospitality, and university-driven foot traffic, 109 Garden represents a stable holding asset in one of Edmonton's most dynamic and amenity-rich corridors.



## SALIENT DETAILS

### THE HIVE

<b>Municipal Addresses:</b>	8630-8642 - 108A Street, Edmonton, AB
<b>Legal Descriptions:</b>	Plan 3749RS, Block 186, Lots 9, 11A & 27U Plan 3901AJ, Block 186, Lots 10 - 11 Plan 3749RS, Block 186, Lot 9
<b>Zoning:</b>	<b>Direct Control (DC.1160)</b>
<b>Site Size:</b>	13,127 SF combined across four parcels with potential to acquire the neighbouring parcel
<b>Estimated Annual Parking Revenue:</b>	\$20,000

### 109 GARDEN

<b>Municipal Address:</b>	8715 - 109 Street NW Edmonton, AB
<b>Legal Description:</b>	Plan EDMONTON; Lot 7
<b>Zoning:</b>	<b>MU (Mixed Use - h16 f3.5 cñ)</b>
<b>Site Size:</b>	+/-5,787 SF
<b>Building Size:</b>	+/-3,500 SF
<b>Net Operating Income:</b>	\$140,000/year with escalations
<b>Tenant:</b>	109 Garden Bistro & Brunch (Personal Guarantee's In Place)
<b>Lease Expiry:</b>	September 30, 2036

**ASKING PRICE: \$3,500,000**

## HIGHLIGHTS

### Prime University-Adjacent Location

Steps from the University of Alberta and within walking distance to Whyte Avenue, the River Valley, and major amenities—driving strong, consistent rental demand.

### Rare, High Profile Owner/User Opportunity

A rare chance to secure a prominently positioned asset along one of Edmonton's most visible corridors, offering exceptional branding potential, heavy pedestrian activity, and strong exposure to both campus and neighbourhood traffic.

### Unique Future Development Opportunity with Holding Income

Provides stable interim income while giving owners the flexibility to plan long-term redevelopment in a high-demand, mixed-use district-supported by strong demographics, ongoing revitalization, and sustained rental interest.

### High-Demand Garneau Corridor

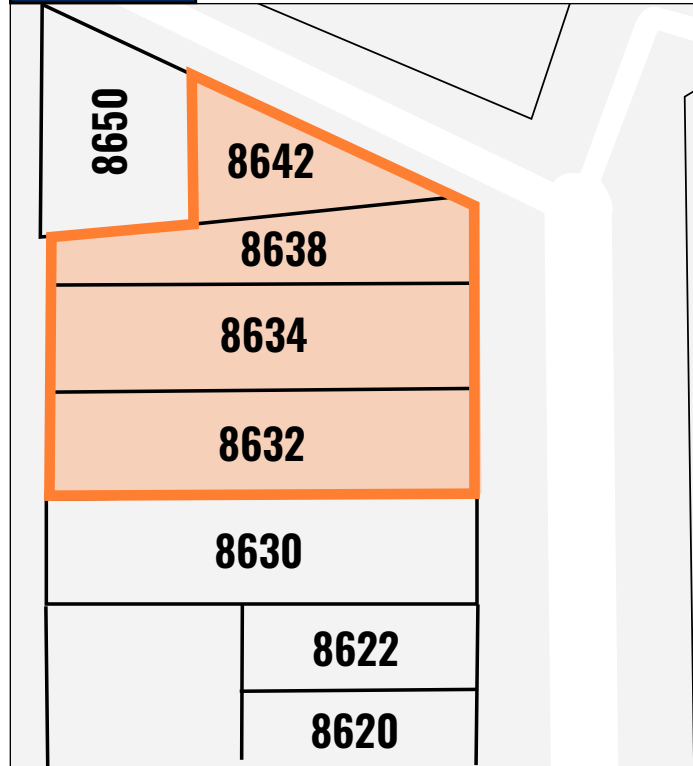
Positioned within one of Edmonton's most vibrant districts, surrounded by 500+ shops, 120+ eateries, theatres, cafés, galleries, festivals, and year-round pedestrian activity - making it a prime destination for dining, retail, and community engagement.



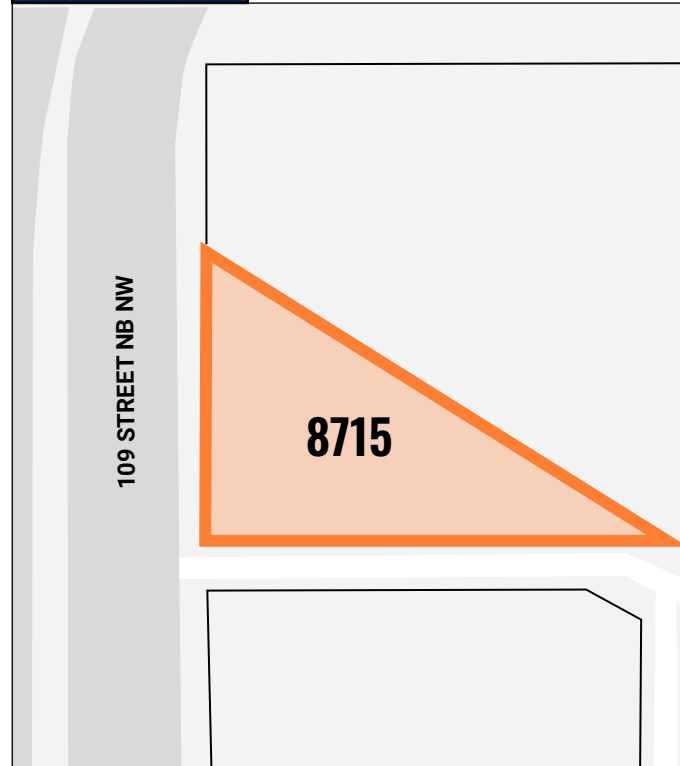
# SITE PLANS / THE HIVE & 109 GARDEN

8630-8642 - 108A STREET & 8715 - 109 STREET, EDMONTON, AB

## THE HIVE



## 109 GARDEN



109 GARDEN BISTRO & BRUNCH DINING AREA



109 GARDEN BISTRO & BRUNCH BAR AREA



109 GARDEN BISTRO & BRUNCH DINING AREA

## LOCATION OVERVIEW: GARNEAU NEIGHBOURHOOD & WHYTE AVENUE

The Hive & 109 Garden Bistro sit at the heart of Garneau, one of Edmonton's most vibrant destinations. Ideally positioned at the gateway to the University of Alberta, placing them steps from campus in one of Edmonton's most dynamic and high-traffic neighbourhoods. The area benefits from a constant flow of students, faculty, staff, medical professionals, and visitors moving between classrooms, residences, labs, and U of A Hospital - creating strong daytime and evening activity year-round. Additionally surrounded by over 500 shops, 120+ eateries, and 60+ patios, Garneau blends boutique retail, everyday conveniences, and unmatched walkability within a tightly knit academic and residential community.

Whyte Avenue's cultural energy amplifies this momentum, with theatres, galleries, live-music venues, and beloved local destinations like the Old Strathcona Farmers' Market and the High Level Bridge Streetcar minutes away. Recent revitalization projects, including Station Park and the Strathcona Back Street, further enhance the district's appeal, making it a lively hub for dining, entertainment, shopping, and campus-adjacent gathering.



# AREA + STATS / THE HIVE & 109 GARDEN

8630-8642 - 108A STREET & 8715 - 109 STREET, EDMONTON, AB



**42,002**

Traffic Count  
Along 109 St & Saskatchewan Dr



**\$105,776**

Projected Average Income



**102,929**

Projected Population  
(2028 est.)



**17.6%**

Projected Growth Rate  
(2025 - 2028)



**35.9**

Median Age



# Marcus & Millichap

Marcus & Millichap 10175 - 101 Street  
1820 Enbridge Centre Edmonton, AB T5J 0H3 +1 (587) 756 1600

**Casey McClelland**  
Senior Managing Director  
Casey.McClelland@  
MarcusMillichap.com  
+1 (587) 756 1560

**Nicholas Cryans**  
Associate  
NCryans@  
ipammi.ca  
+1 (587) 756 1600

**Kevin Glass**  
Director  
Kevin.Glass@  
MarcusMillichap.com  
+1 (587) 756 1570

**Mike Hoffert**  
Director  
Mike.Hoffert@  
MarcusMillichap.com  
+1 (587) 756 1550

The information contained in the following Marketing Brochure is proprietary and strictly confidential. It is intended to be reviewed only by the party receiving it from Marcus & Millichap and should not be made available to any other person or entity without the written consent of Marcus & Millichap. This Marketing Brochure has been prepared to provide summary, unverified information to prospective purchasers, and to establish only a preliminary level of interest in the subject property. The information contained herein is not a substitute for a thorough due diligence investigation. Marcus & Millichap has not made any investigation, and makes no warranty or representation, with respect to the income or expenses for the subject property, the future projected financial performance of the property, the size and square footage of the property and improvements, the presence or absence of contaminating substances, PCB's or asbestos, the compliance with State and Federal regulations, the physical condition of the improvements thereon, or the financial condition or business prospects of any tenant, or any tenant's plans or intentions to continue its occupancy of the subject property. The information contained in this Marketing Brochure has been obtained from sources we believe to be reliable; however, Marcus & Millichap has not verified, and will not verify, any of the information contained herein, nor has Marcus & Millichap conducted any investigation regarding these matters and makes no warranty or representation whatsoever regarding the accuracy or completeness of the information provided. All potential buyers must take appropriate measures to verify all of the information set forth herein.

Marcus & Millichap is not affiliated with, sponsored by, or endorsed by any commercial tenant or lessee identified in this marketing package. The presence of any corporation's logo or name is not intended to indicate or imply affiliation with, or sponsorship or endorsement by, said corporation of Marcus & Millichap, its affiliates or subsidiaries, or any agent, product, service, or commercial listing of Marcus & Millichap, and is solely included for the purpose of providing tenant lessee information about this listing to prospective customers. This information has been secured from sources we believe to be reliable, but we make no representations or warranties, express or implied, as to the accuracy of the information. References to square footage or age are approximate. Buyers must verify the information and bears all risk for any inaccuracies. Marcus & Millichap is a trademark of Marcus & Millichap Real Estate Investment Services, Inc. Used under license by Marcus & Millichap Real Estate Investment Services Canada Inc. © 2026 Marcus & Millichap. All rights reserved.