

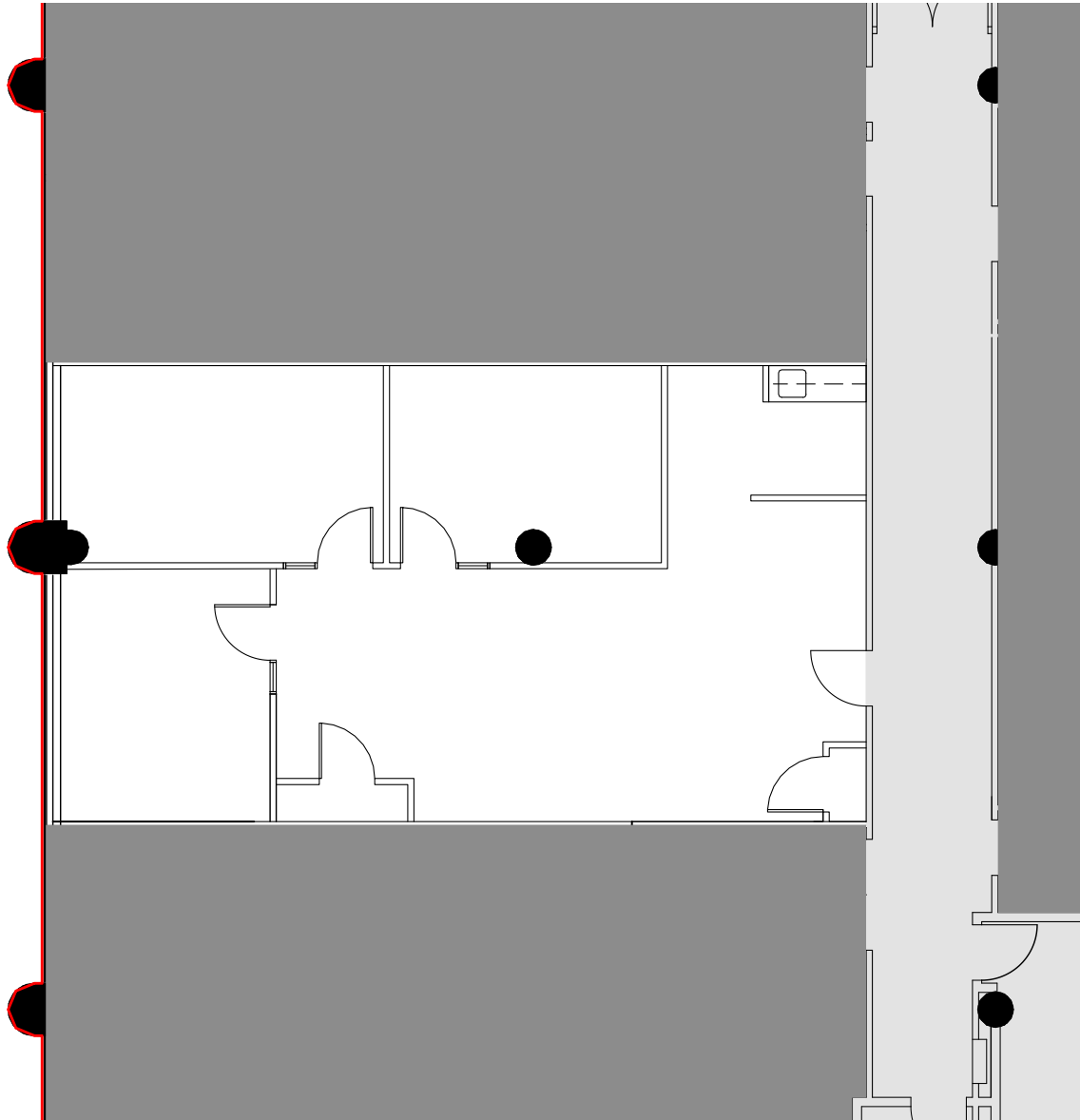
**Purdy's Landing  
Suite 307**

1949 Upper Water Street  
Halifax Canada B3J 3N3

**CONTACT INFORMATION**

GWL Realty Advisors Inc  
(902) 421-1122 | [pwoneserve@gwlra.com](mailto:pwoneserve@gwlra.com)

**Availability: Now**



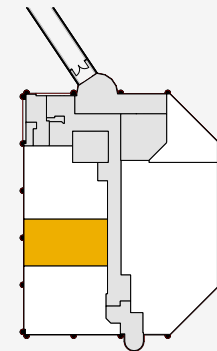
SUITE VIEW

**INFORMATION**

**SUITE:** 3rd floor, Suite 307

**RENTABLE AREA:** 1,268 sq.ft.

The Purdy's Landing building is a part of the Purdy's Wharf complex and is strategically connected to Purdy's Wharf Tower One and Two via a pedway system. This building features a retail area which services the towers and is finished in a striking colored glass and concrete exterior.



KEY PLAN