



FOR LEASE

1085 Homer Street

// OPEN PLAN YALETOWN OFFICE SPACE

THE OPPORTUNITY

This bright southwest-facing suite offers high ceilings, and an abundance of natural light throughout. Featuring 1 boardroom, 3 meeting rooms, a spacious kitchen, and open workspace, it's a functional layout designed for collaboration and comfort. Located in vibrant Yaletown, the office is surrounded by excellent amenities, dining options, and public transportation.

Unit: 325
Area: 3,785 SF
Availability: Immediately
Basic Rent: Contact listing agent
Additional Rent: \$24.89 PSFPA (2025 est.)



Meeting
Rooms



Natural
Light



Prime
Location



Bike
Friendly



Close To
Skytrain



Open
Floorplan



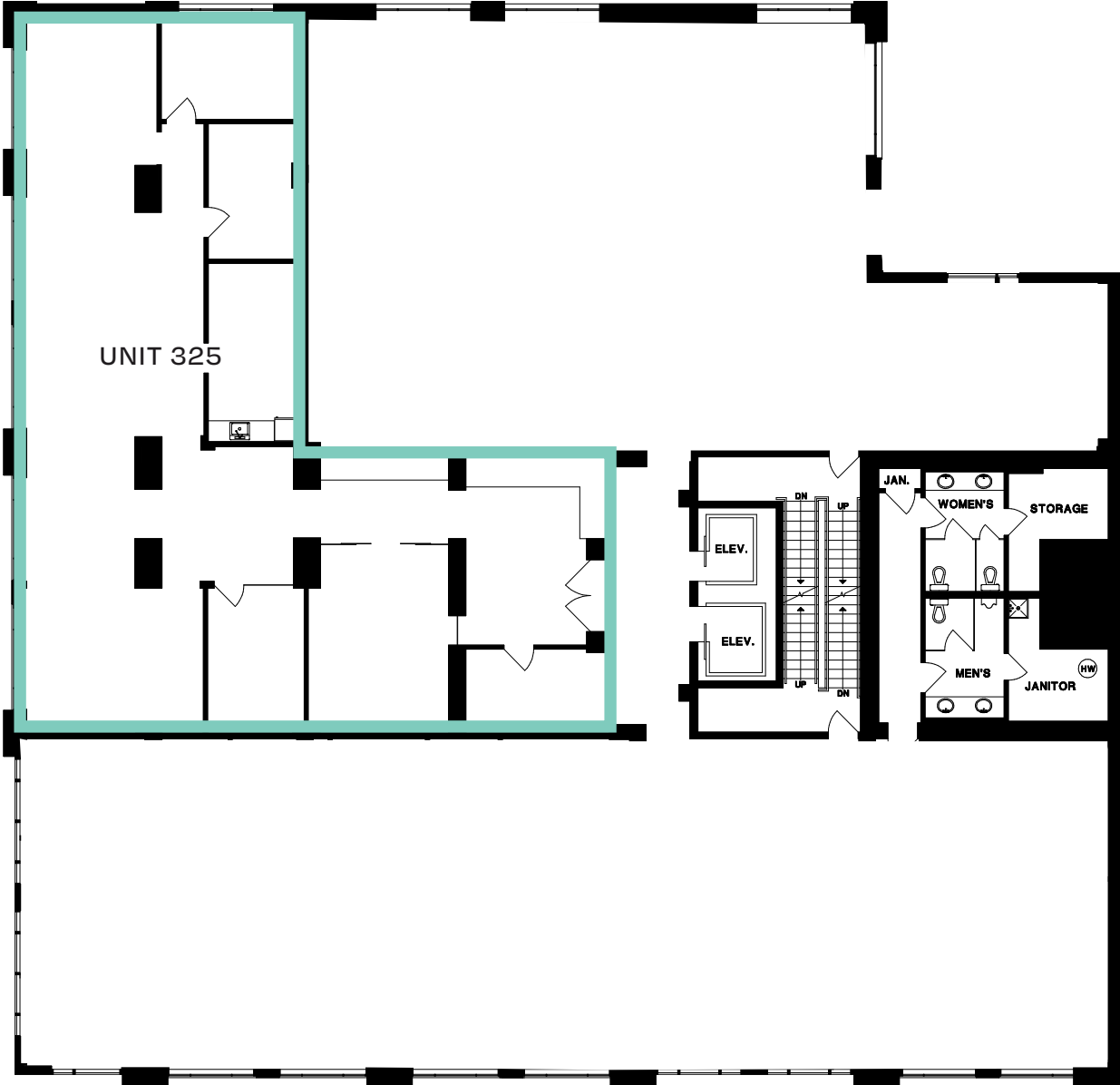
FLOOR PLANS

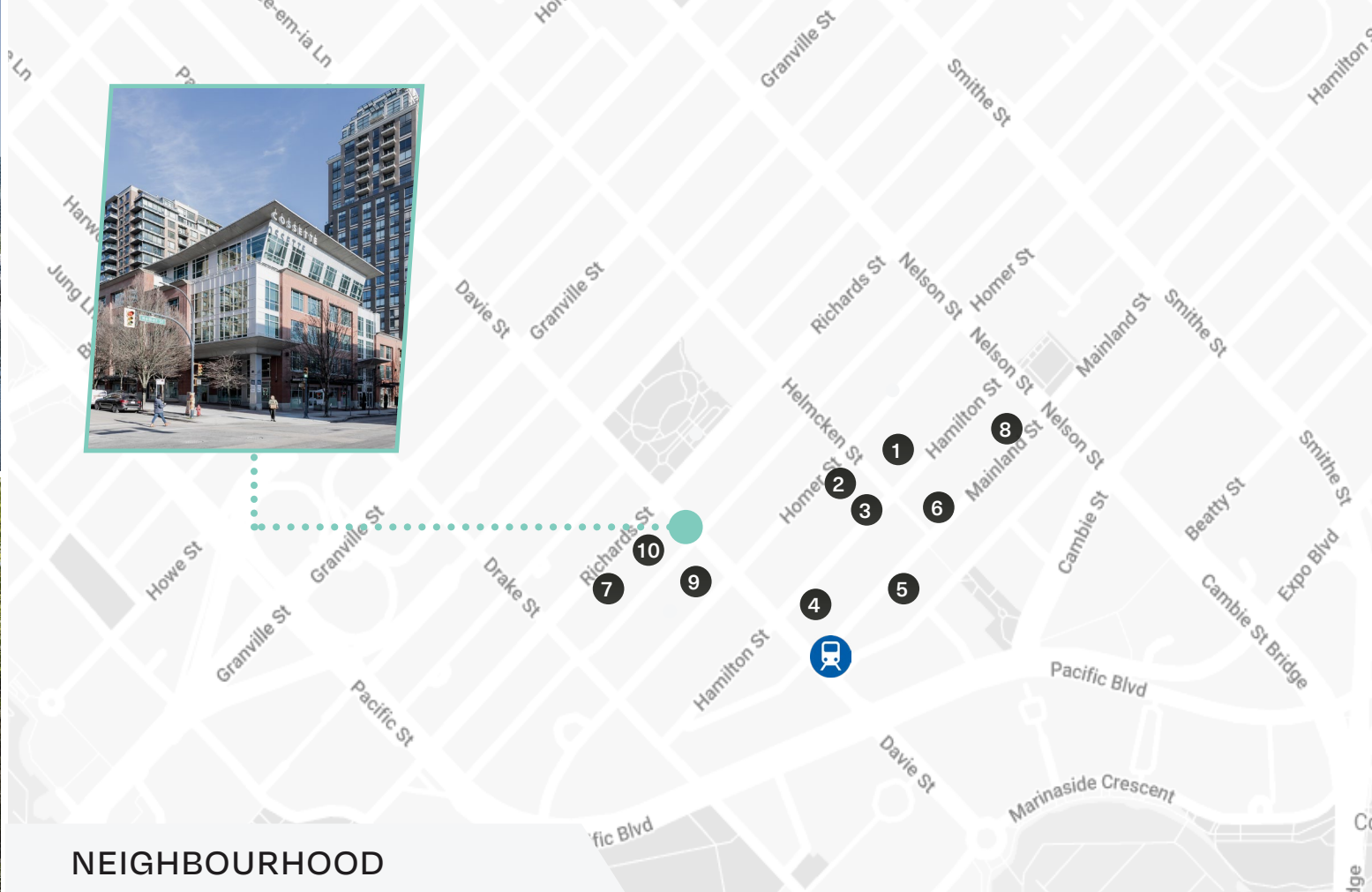
UNIT 325

3,785 SF (APPROX.)



[VIRTUAL TOUR](#)





NEIGHBOURHOOD

Located in vibrant Yaletown, 1085 Homer offers easy access to top dining, shopping, and entertainment. With excellent transit links, including the Yaletown–Roundhouse Canada Line Station, commuting is easy. Just steps from the Seawall and green spaces like David Lam Park, providing the perfect urban atmosphere.

- | | |
|--------------------|----------------------------|
| 1. Blue Water Cafe | 6. Earls Kitchen + Bar |
| 2. Scotiabank | 7. Jaybird Studio |
| 3. Elisa Steak | 8. The Greek Yaletown |
| 4. Starbucks | 9. JJ Bean Coffee Roasters |
| 5. Minami | 10. Choices Market |



TRANSIT SCORE

100



WALK SCORE

100



BIKE SCORE

84



For more information, please contact:



Harris Sheldon

ASSOCIATE

+1 604 612 6516

harris@floorspace.ca

FLOORSPACE

900 West Hastings St., Suite 520

Vancouver, BC Canada

V6C 1E5

www.floorspace.ca

THIS DOCUMENT HAS BEEN PREPARED BY FLOORSPACE COMMERCIAL INC. FOR ADVERTISING AND GENERAL INFORMATION ONLY. ALL INFORMATION CONTAINED HEREIN IS FROM SOURCES WE DEEM RELIABLE, AND WE HAVE NO REASON TO DOUBT ITS ACCURACY; HOWEVER, NO GUARANTEE OR RESPONSIBILITY IS ASSUMED THEREOF, AND IT SHALL NOT FORM ANY PART OF FUTURE CONTRACTS. PROPERTY INFORMATION IS SUBMITTED SUBJECT TO ERRORS AND OMISSIONS AND ALL INFORMATION SHOULD BE CAREFULLY VERIFIED. ANY INTERESTED PARTY SHOULD UNDERTAKE THEIR OWN INQUIRIES AS TO THE ACCURACY OF THE INFORMATION. ALL MEASUREMENTS QUOTED HEREIN ARE APPROXIMATE. THIS PUBLICATION IS THE COPYRIGHTED PROPERTY OF FLOORSPACE COMMERCIAL INC. AND/OR ITS LICENSOR(S). COPYRIGHT © 2025 FLOORSPACE COMMERCIAL INC.

