

# KENSINGTON SHOPPING CENTRE

11909 134 Avenue Edmonton, AB



Prime Retail Opportunities in North Edmonton

## FOR LEASE

**SABLE  
REALTY**

**Noah Issa**  
Vice President  
780-236-5723  
noah@sablerealty.ca

**Ali Shaben**  
President, Broker/Owner  
780-446-8622  
ali@sablerealty.ca

**Mahmoud Salem**  
Associate  
780-807-6597  
msalem@sablerealty.ca

## ► Kensington Shopping Centre

Nestled in the densely populated neighbourhood of Kensington are two bays for lease, directly across from Kensington Community Hall and Kensington School. In close proximity to several parks and schools, this vacancy is also just 5 minutes from the Kensington Crossing Centre, 8 minutes from Yellowhead Trail and 9 minutes from St. Albert Trail.

### PROPERTY DETAILS: 2 Units for Lease

<b>Municipal Address</b>	11919 134 Avenue , Edmonton AB
<b>Possession</b>	Immediate
<b>Zoning</b>	Neighbourhood Commercial (CN)
<b>Size</b>	1,591 Sq Ft
<b>Base Rent</b>	\$25.00 PSF
<b>Additional Rent</b>	\$10.00 PSF

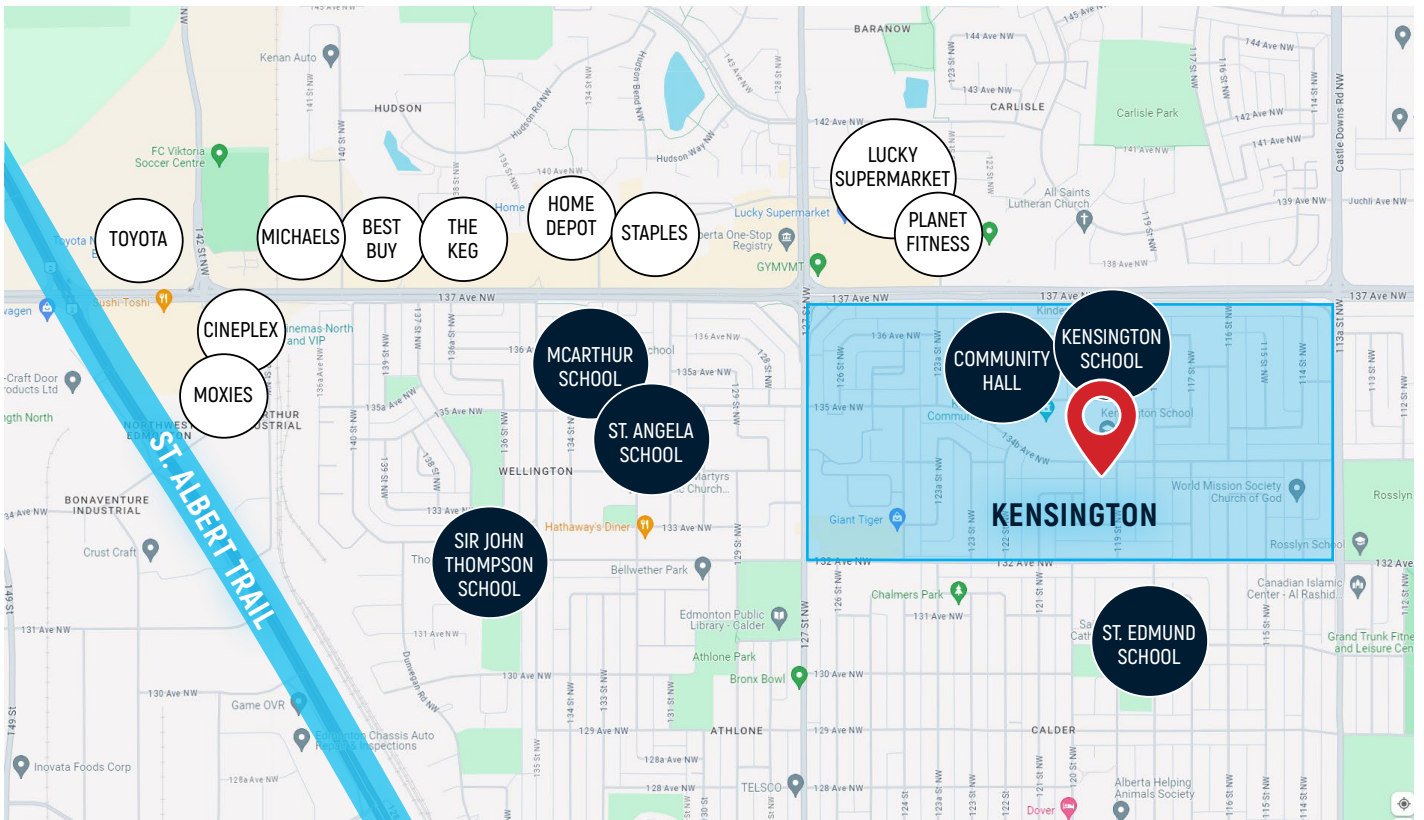
<b>Municipal Address</b>	11909 134 Avenue, Edmonton AB
<b>Possession</b>	Immediate
<b>Zoning</b>	Neighbourhood Commercial (CN)
<b>Size</b>	1,049 Sq Ft
<b>Base Rent</b>	\$25.00 PSF
<b>Additional Rent</b>	\$10.00 PSF



**FOR LEASE** | Kensington Shopping Centre 11909 134 Avenue, Edmonton AB

**SABLE REALTY:** NOAH ISSA 780-236-5723 | ALI SHABEN 780-446-8622 | MAHMOUD SALEM 780-807-6597  
15035 - 121A Avenue, Edmonton, Alberta T5V 1P3 | [www.sablerealty.ca](http://www.sablerealty.ca)

**SABLE  
REALTY**



**FOR LEASE** | Kensington Shopping Centre 11909 134 Avenue, Edmonton AB

**SABLE REALTY:** NOAH ISSA 780-236-5723 | ALI SHABEN 780-446-8622 | MAHMOUD SALEM 780-807-6597

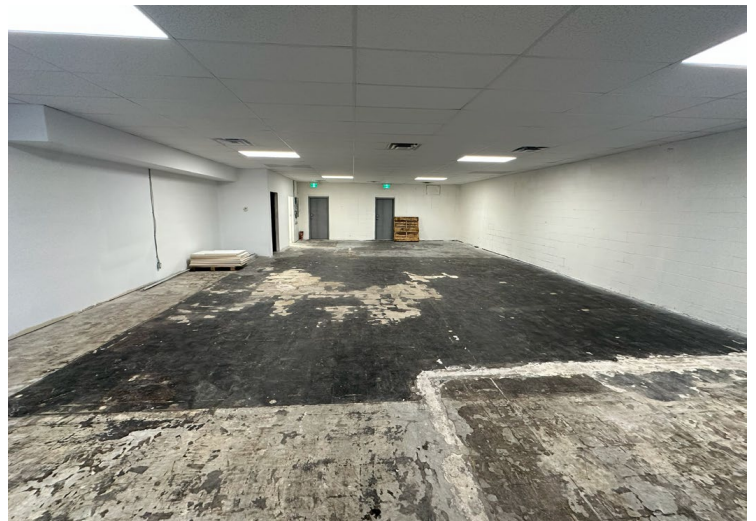
15035 – 121A Avenue, Edmonton, Alberta T5V 1P3 | [www.sablerealty.ca](http://www.sablerealty.ca)



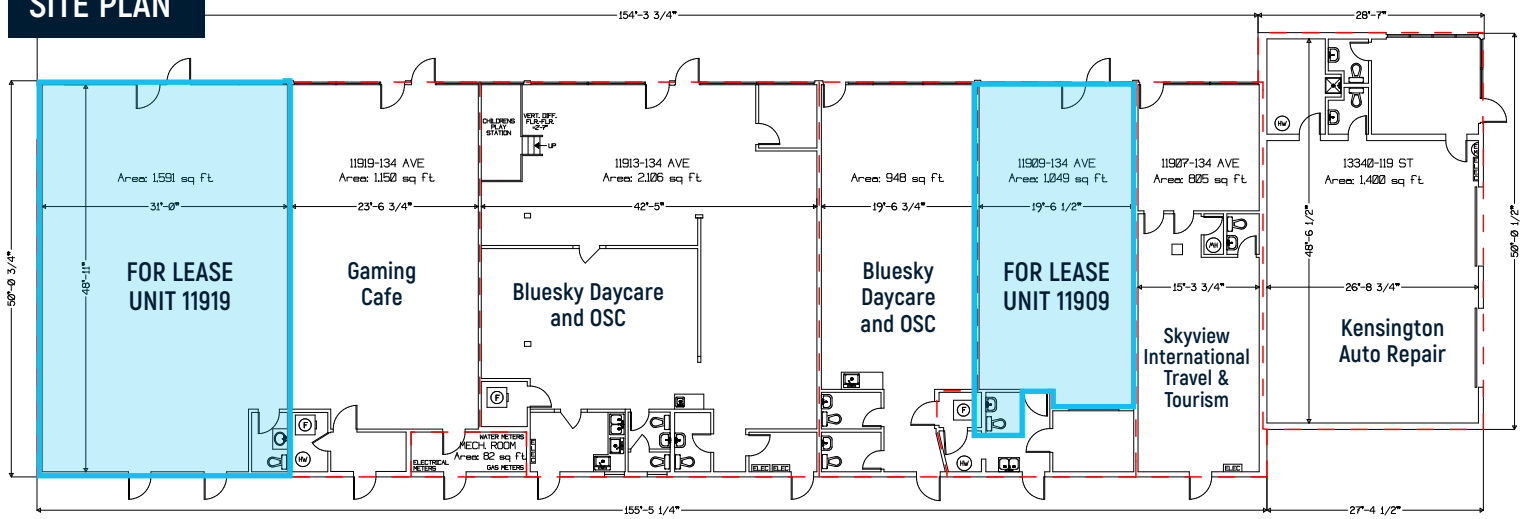
11909 134 STREET



11919 134 STREET



SITE PLAN



FOR LEASE | Kensington Shopping Centre 11909 134 Avenue, Edmonton AB

SABLE REALTY: NOAH ISSA 780-236-5723 | ALI SHABEN 780-446-8622 | MAHMOUD SALEM 780-807-6597

15035 - 121A Avenue, Edmonton, Alberta T5V 1P3 | www.sablerealty.ca





This document has been prepared by Sable Realty for advertising and general information only. Sable Realty makes no guarantees, representations or warranties of any kind, expressed or implied, regarding the information including, but not limited to, warranties of content, accuracy and reliability. Any interested party should undertake their own inquiries as to the accuracy of the information. Sable Realty excludes unequivocally all inferred or implied terms, conditions and warranties arising out of this document and excludes all liability for loss and damages arising therefrom.

**FOR LEASE** | Kensington Shopping Centre 11909 134 Avenue, Edmonton AB

**SABLE REALTY:** NOAH ISSA 780-236-5723 | ALI SHABEN 780-446-8622 | MAHMOUD SALEM 780-807-6597  
15035 - 121A Avenue, Edmonton, Alberta T5V 1P3 | [www.sablerealty.ca](http://www.sablerealty.ca)

**SABLE  
REALTY**