

FOR LEASE
87 Wade Avenue
Office Loft

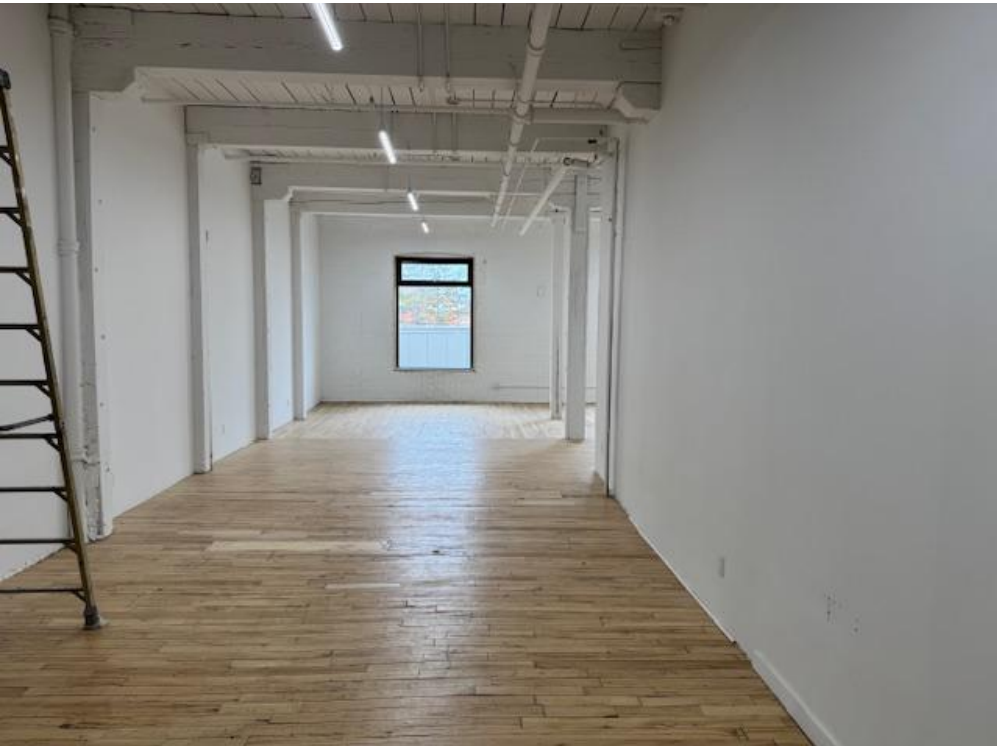


PROPERTY DETAILS

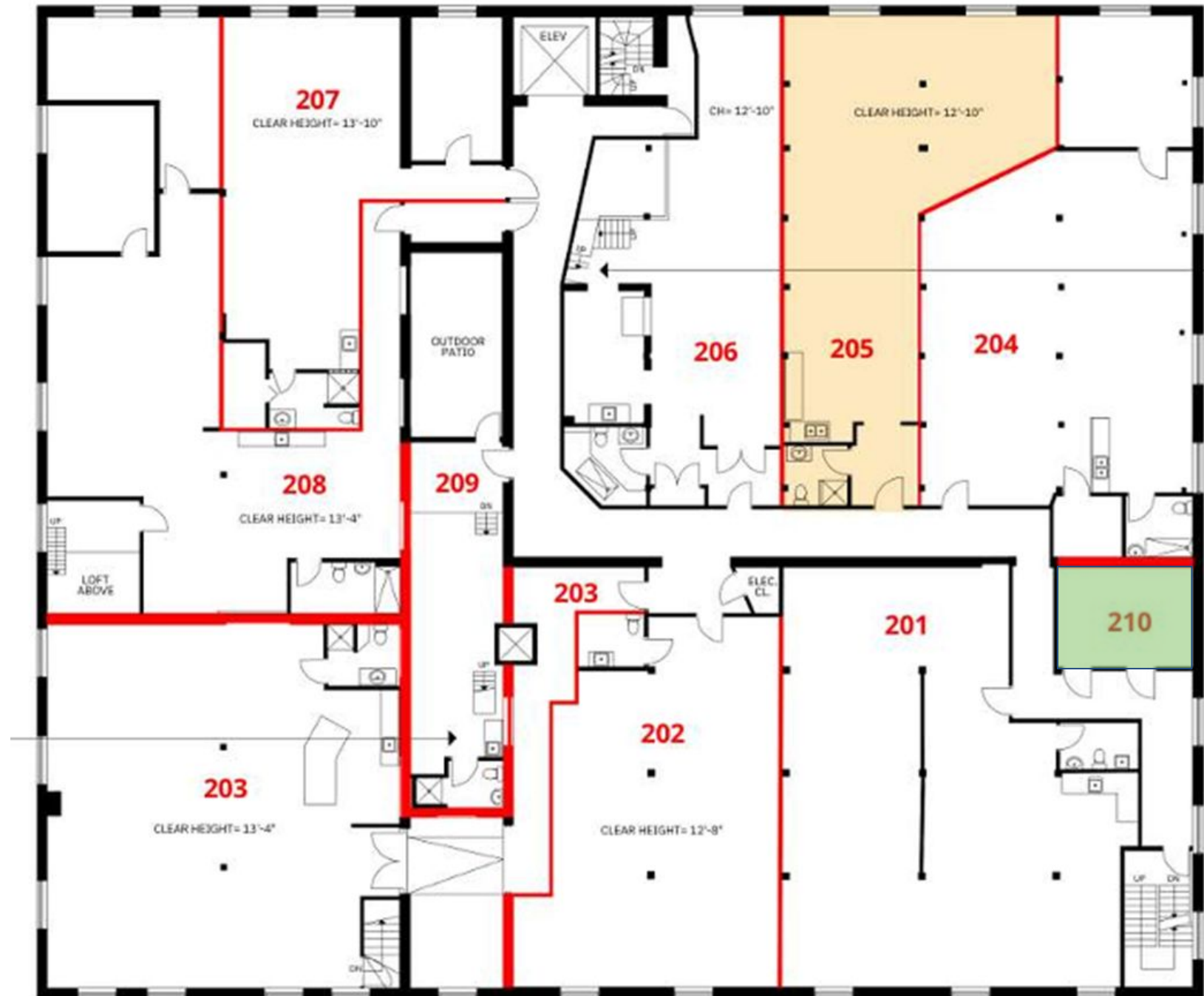
LOCATION	On Wade Avenue, east of Lansdowne Avenue. CLICK FOR MAP
SIZE	Unit 203: 2,143 SF Unit 204: 1,538 SF Unit 207 and 208 can be combined for 3,059 SF Unit 305: 1,800 SF
TERM	2-5 Years
POSSESSION	Unit 203: September 15th, 2025 Unit 204: September 1st, 2025 Unit 207 & 208: December 2025 Unit 305: October 1st, 2025
ASKING RATE	\$29 Per Square Foot Semi-Gross + Gas/Hydro

PROPERTY HIGHLIGHTS

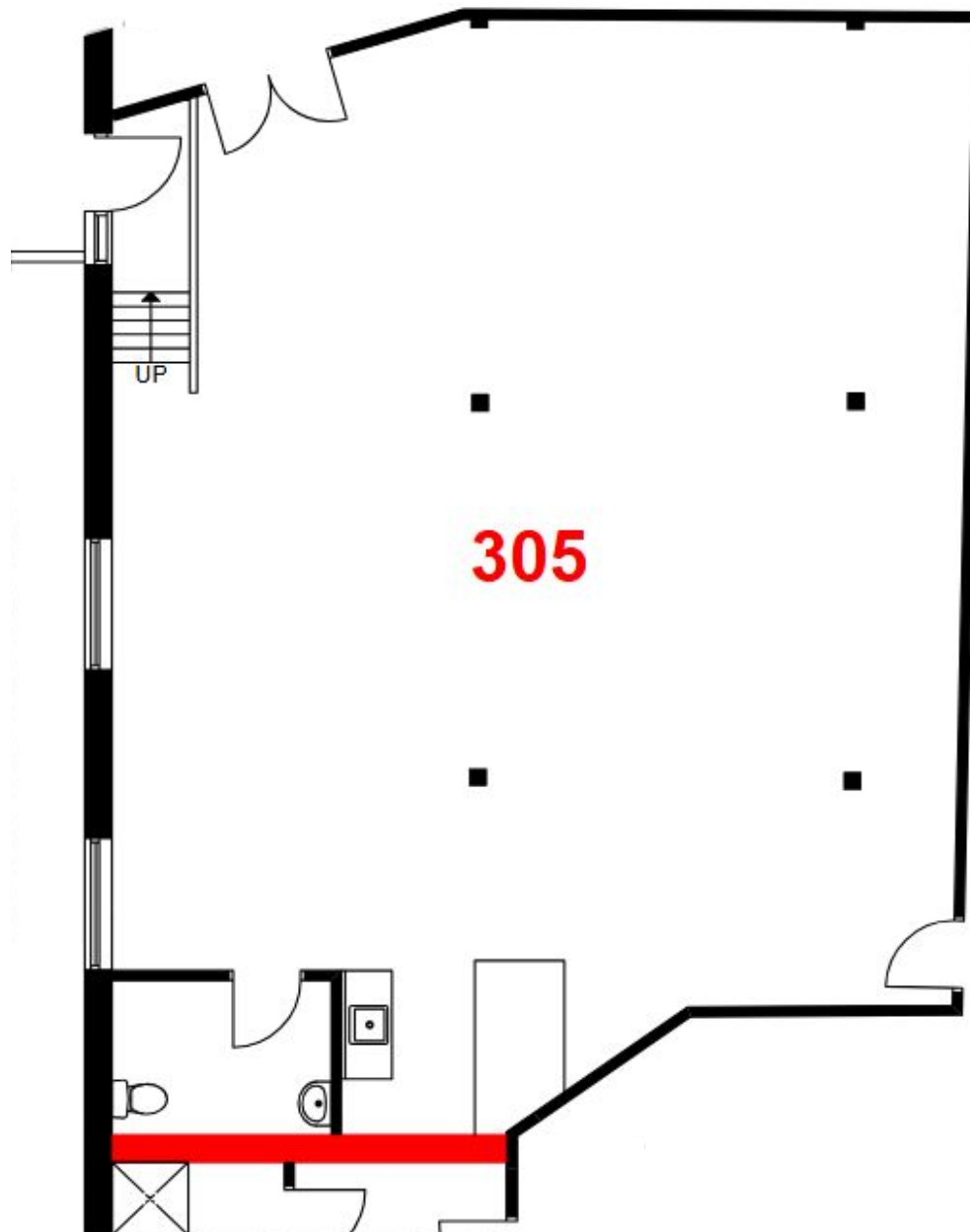
Open space with in-suite washroom and rough-in for a kitchenette, wood floors and 13 ft ceilings. Unit 305 includes access to the rooftop deck. The property is a 2 minute walk from Lansdowne Station at Bloor Street West, with its abundant restaurants/shops, and steps away from bus stops with service north and south on Lansdowne.



Floorplan (Second Floor)



Floorplan (Third Floor)



CONNECTIVITY



BIKE SCORE OF **84**



Biking is convenient for most trips



TRANSIT SCORE OF **97**



World-class public transportation



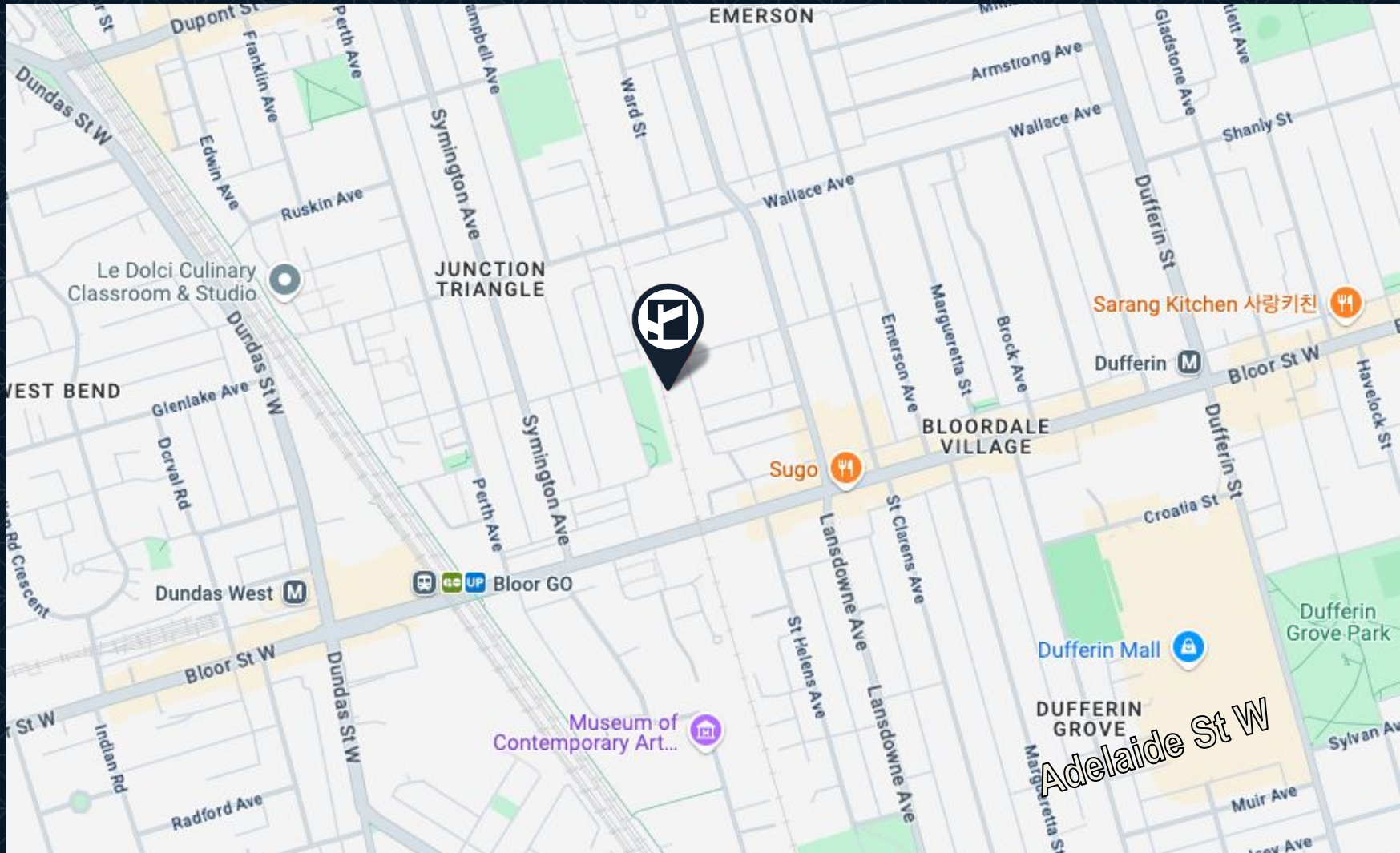
WALK SCORE OF **88**



Most errands can be accomplished on foot

[CLICK
HERE](#)

AREA MAP



CONTACT

TIM NOVAK*

Senior Vice President
416.703.6621 Ext. 246
Tim.novak@cbmetcom.com



370 KING STREET WEST, UNIT 802
TORONTO, ON | M5V 1J9
416.703.6621
WWW.CBMETCOM.COM