

#120 - 1325 Riverside Road

Building A - Riverside Road Business Park, Abbotsford, BC

17,390 SF Large-Bay Industrial Opportunity at Riverside Road Business Park



Contact

Daniel McGauley

Personal Real Estate Corporation

Senior Vice President
Industrial Properties
604 662 5186

daniel.mcgauley@cbre.com

Shaun Bucke

Senior Associate
Industrial Properties
604 662 5121
shaun.bucke@cbre.com

Maureen Mounzer

Personal Real Estate Corporation

Vice President
Suburban Commercial Properties
604 669 1466

maureen.mounzer@cbre.com

The Opportunity

Position your business in one of Abbotsford's most dynamic industrial hubs. Unit 120 in Building A offers premium-grade space in a master-planned business park with exceptional access, visibility, and modern specifications tailored for high-performance industrial users.

Newly developed by Cedar Coast and built by Orion Construction, Riverside Road Business Park is Abbotsford's first premier master-planned strata industrial complex. This large-bay unit in Building A features 1 grade-level and 2 dock-level loading doors, and second-floor concrete mezzanine space.



Property Details

Available Area

Warehouse	15,062 SF
Mezzanine	3,910 SF
Total	17,390 SF

Asking Lease Rate

Contact Listing Agents

Additional Rent

\$_____ PSF (2025 estimate)

Zoning

I-2 (General Industrial)

Ceiling Heights

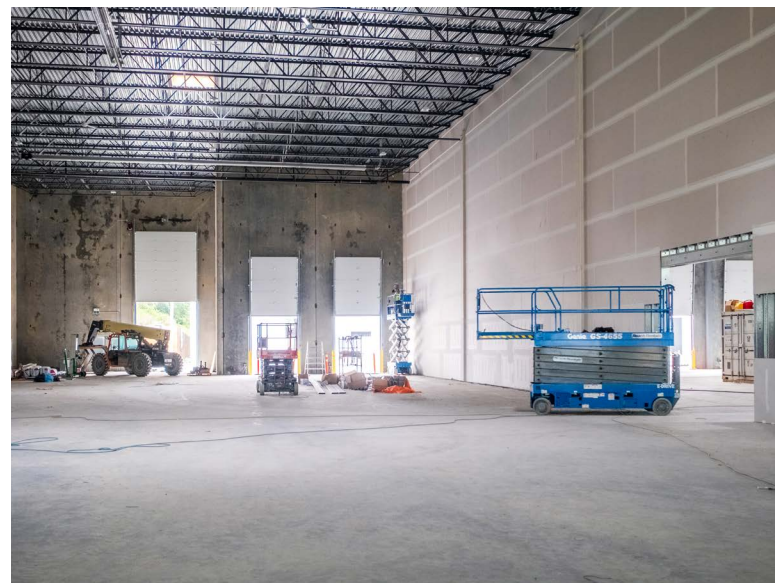
Warehouse	32' clear
Ground Floor	10'8" to underside of joist (Below Mezzanine)
Mezzanine	18'10" to underside of joist

Year Built

2025

Available

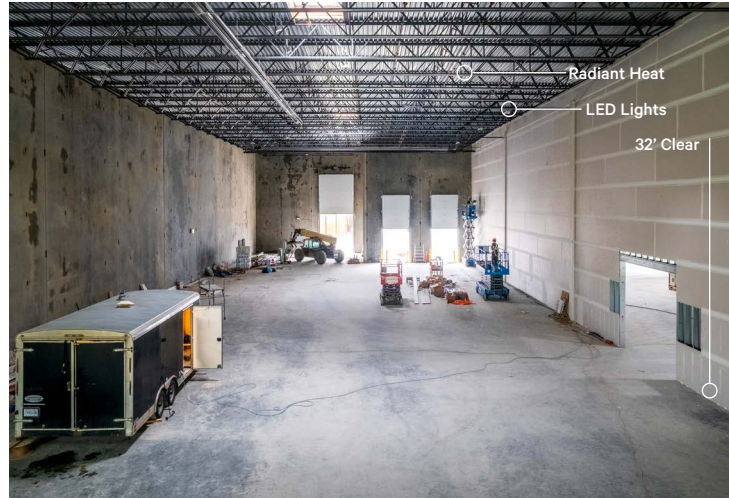
30 - 60 Days



#120 - 1325 Riverside Road

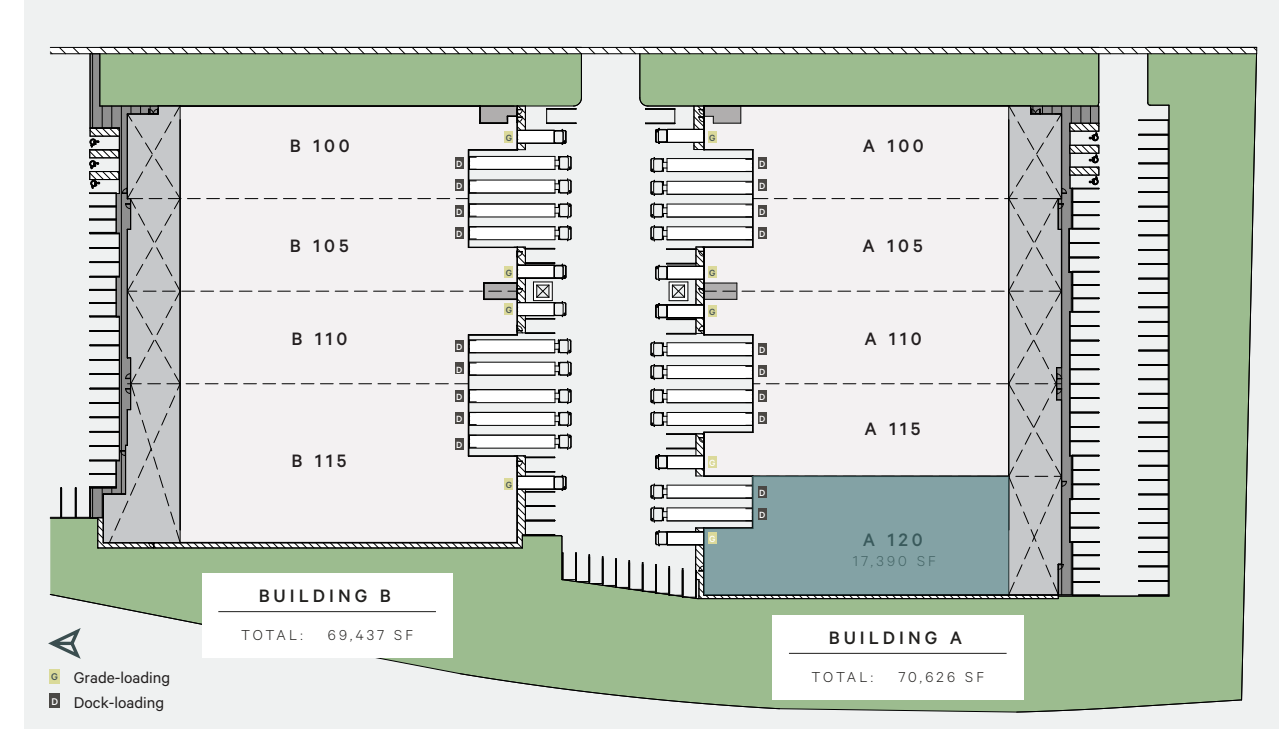
Building A - Riverside Road Business Park, Abbotsford, BC

Industrial | For Lease



Site Plan

NOT TO SCALE



Highlights

CBRE Limited is pleased to present an exceptional opportunity to lease a first-class industrial strata unit featuring upgraded roof insulation for improved heating and cooling efficiency. Ideally located just minutes from Highway 1 and approximately 5 minutes from the Sumas/U.S. border, this unit offers excellent access for regional and cross-border logistics. With modern construction, flexible layouts, and efficient design, it's perfectly suited for a wide range of industrial uses.



18 parking stalls



1 grade door (12' x 14')



2 dock doors (8' x 10') with hydraulic levelers



200 amps per unit / 600 volts



High efficiency LED lighting (upgraded to 5,000K)



Warehouse Floor Load 700 lbs PSF

Mezzanine Floor Load 100 lbs PSF



Insulated tilt-up construction (upgraded R25)



Efficient radiant tube heating system for increased efficiency



#120 - 1325 Riverside Road

Building A - Riverside Road Business Park, Abbotsford, BC



Driving Times

in minutes

45

Hwy 99

70

YVR Airport

55

Hwy 91

75

Downtown Vancouver

5

Hwy 1

5

CAN/USA Border

75

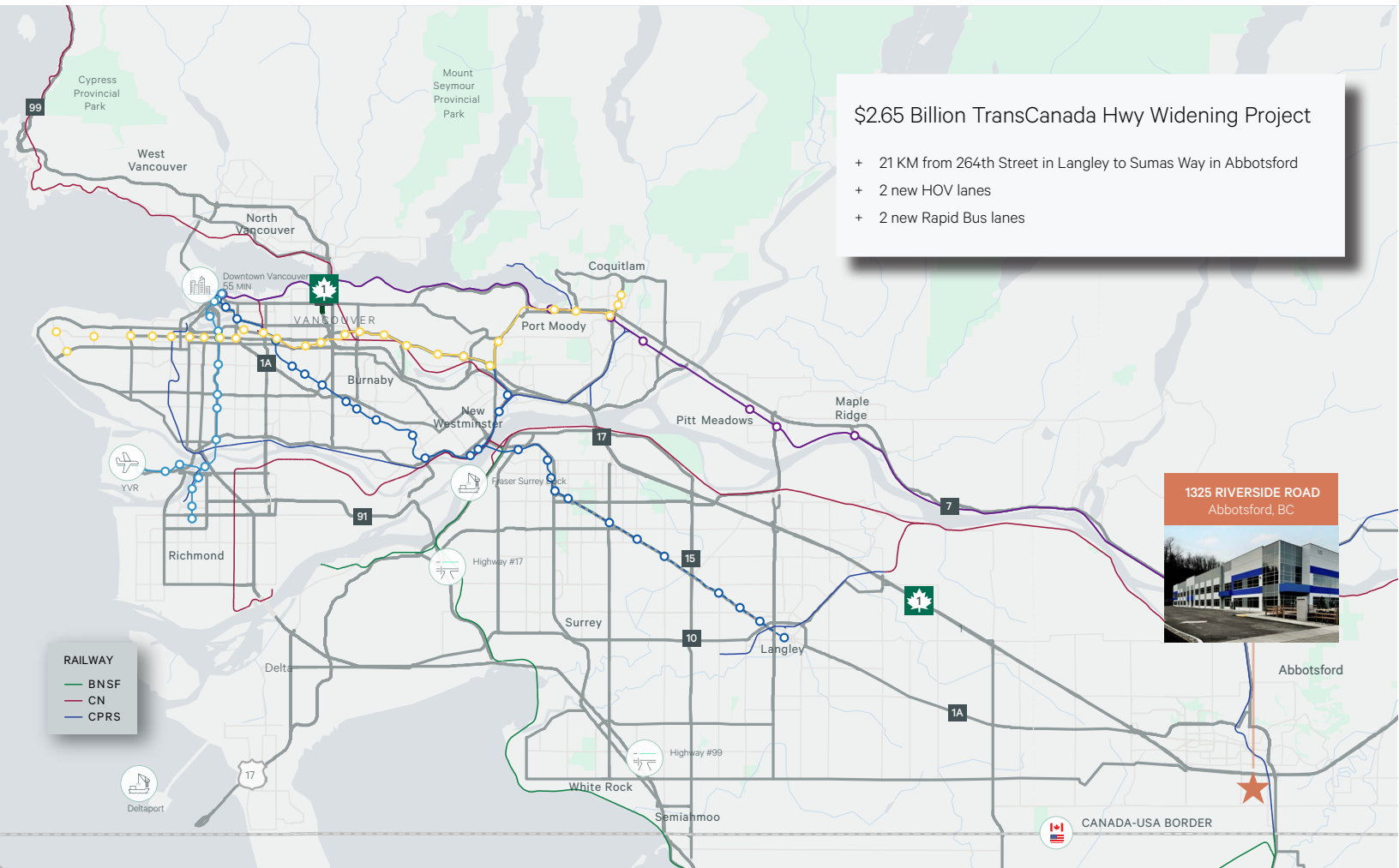
Deltaport

55

Fraser Surrey Docks

Abbotsford stands as British Columbia's largest municipality outside Metro Vancouver—and it's rapidly expanding. Riverside Road Business Park places your business in a high-growth corridor with direct access to key transportation routes including Highway 1, Highway 11, and the Sumas/US Border.

This well-connected location supports efficient logistics and smooth commuting, enhanced by recent infrastructure upgrades and proximity to public transit. Surrounded by a wide array of dining, retail, and service amenities, Riverside Road Business Park offers the convenience and visibility your business needs to thrive.



Contact

Daniel McGauley

Personal Real Estate Corporation

Senior Vice President

Industrial Properties

604 662 5186

daniel.mcgaleay@cbre.com

Shaun Bucke

Senior Associate

Industrial Properties

604 662 5121

shaun.bucke@cbre.com

Maureen Mounzer

Personal Real Estate Corporation

Vice President

Suburban Commercial Properties

604 669 1466

maureen.mounzer@cbre.com

cbre.ca/properties

CBRE Limited | 1021 West Hastings Street | #2500 | Vancouver, BC V6E 0C3 | www.cbre.ca

This disclaimer shall apply to CBRE Limited, Real Estate Brokerage, and to all other divisions of the Corporation; to include all employees and independent contractors ("CBRE"). The information set out herein, including, without limitation, any projections, images, opinions, assumptions and estimates obtained from third parties (the "Information") has not been verified by CBRE, and CBRE does not represent, warrant or guarantee the accuracy, correctness and completeness of the Information. CBRE does not accept or assume any responsibility or liability, direct or consequential, for the Information or the recipient's reliance upon the Information. The recipient of the Information should take such steps as the recipient may deem necessary to verify the Information prior to placing any reliance upon the Information. The Information may change and any property described in the Information may be withdrawn from the market at any time without notice or obligation to the recipient from CBRE. CBRE and the CBRE logo are the service marks of CBRE Limited and/or its affiliated or related companies in other countries. All other marks displayed on this document are the property of their respective owners. All Rights Reserved. Mapping Sources: Canadian Mapping Services canadamapping@cbre.com; DMTI Spatial, Envirionics Analytics, Microsoft Bing, Google Earth.