

**NAI**Commercial

±2,100 SF

Suite 910 - 800 West Pender Street | Vancouver, BC

**FOR SUBLEASE** | Office Space in Downtown Financial District

Hayden Elliott  
Vice President, Office Leasing  
604 219 9404 | [hayden.elliott@naicommercial.ca](mailto:hayden.elliott@naicommercial.ca)

**NAI Commercial**  
1300-1075 W Georgia St, Vancouver, BC V6E 3C9  
+1 604 683 7535 | [naicommercial.ca](http://naicommercial.ca)



# Suite 910 - 800 W Pender Street Vancouver, BC

**Available Area**  
± 2,100 SF (approx.)

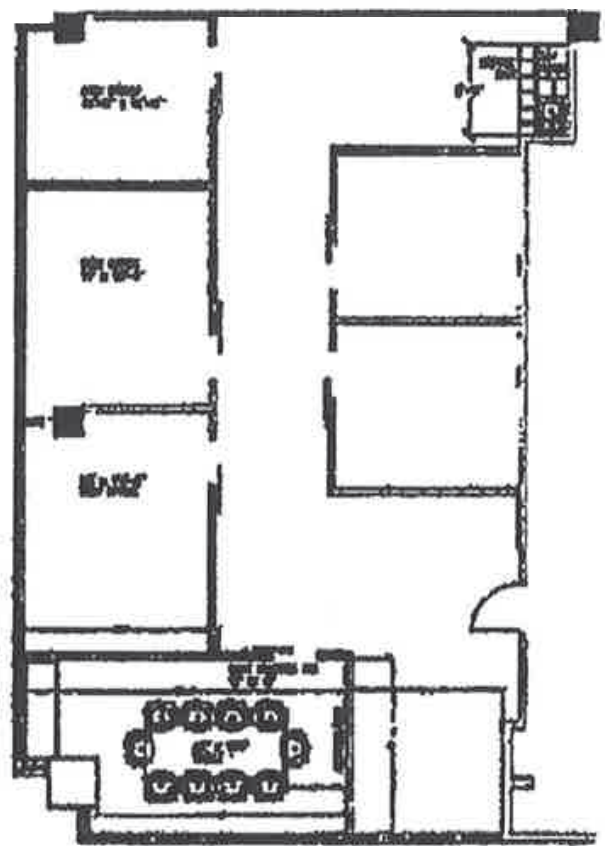
**Lease Rate**  
Contact listing agent

**Additional Rent**  
\$22.22 PSF (est. 2025)

**Term**  
Flexible

**Availability**  
Immediate

## Floor Plan



## Description of Premises

Suite 910 is improved with Reception, 5 offices, Board-room, kitchen and open area.

## Location

800 West Pender is located on the southwest corner of Pender and Howe Streets in the heart of Downtown Vancouver's financial district. Pacific Centre, with its many shops and services, is directly across Howe Street. All major bus routes, Skytrain and the West Coast Express are located in the immediate vicinity. Features secure underground parking, security card access system and in-house property management.





**VANCOUVER  
CONVENTION CENTRE**

**CANADA  
PLACE**



**BURRARD**



**WATERFRONT**

**800  
W PENDER**



**GRANVILLE**



**VANCOUVER  
CITY CENTRE**

**WITHIN WALKING DISTANCE**

**RESTAURANTS & QSR:**

- ▶ Hawksworth
- ▶ Hy's Steakhouse
- ▶ Hydra Estiatorio
- ▶ The Keg
- ▶ Gotham Steakhouse
- ▶ Acquafarina
- ▶ Nightingale
- ▶ Joe Fortes
- ▶ JOEY Bentall One
- ▶ Cactus Club Cafe
- ▶ Black + Blue
- ▶ Water St. Cafe

**CAFES:**

- ▶ Tim Hortons
- ▶ Starbucks
- ▶ Thierry
- ▶ Breka Bakery & Cafe
- ▶ Nero Belgian Waffle Bar
- ▶ Caffè Artigiano
- ▶ Faubourg
- ▶ JJ Bean Coffee
- ▶ Waves Coffee
- ▶ Incognito Coffee
- ▶ Bellaggio Cafe
- ▶ Cafe Monet Bakery

**SHOPPING & SERVICES:**

- ▶ Pacific Centre
- ▶ London Drugs
- ▶ Robson Shopping District
- ▶ Vancouver Public Library
- ▶ Pharmasave
- ▶ Scotiabank
- ▶ RBC Royal Bank
- ▶ TD Canada Trust
- ▶ CIBC
- ▶ BMO

**98**

**WALKER'S  
PARADISE**



**100**

**RIDER'S  
PARADISE**



**80**

**VERY  
BIKEABLE**



**Hayden Elliott**

Vice President, Office Leasing  
604 219 9404  
hayden.elliott@naicommercial.ca

**NAI Commercial**

1300-1075 W Georgia St  
Vancouver, BC V6E 3C9  
+1 604 683 7535  
naicommercial.ca

No warranty or representation, express or implied, is made as to the accuracy of the information contained herein, and the same is submitted subject to errors, omissions, change of price, rental or other conditions, prior sale, lease or financing, or withdrawal without notice, and of any special listing conditions imposed by our principals no warranties or representations are made as to the condition of the property or any hazards contained therein are any to be implied.