



FOR SUBLEASE

# Unit 10 – 3571 Viking Way

OFFICE AND INDUSTRIAL UNIT IN RICHMOND



# Functional Industrial Space in a Highly Connected Richmond Location

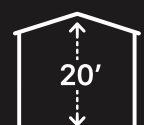
## THE OPPORTUNITY

3571 Viking Way offers a well-positioned industrial opportunity in Richmond’s Crestwood area, with direct access to Knight Street, Highways 91 and 99, Vancouver International Airport, and the US border. The space combines warehouse, office, and support areas within a functional, flexible layout suited to a range of industrial users. A practical footprint in a highly connected location, it supports efficient day-to-day operations.

<b>Total Area</b>	~18,215 SF
<b>Basic Rent</b>	<del>\$25.00</del> \$10.00 PSFPA
<b>Additional Rent</b>	\$7.60 PSFPA (2026 est.)
<b>Zoning</b>	IB1
<b>Availability</b>	Immediately
<b>Sublease Expiry</b>	November 2027



ON-SITE PARKING



20' CLEAR HEIGHT



CLOSE TO MAJOR HIGHWAYS



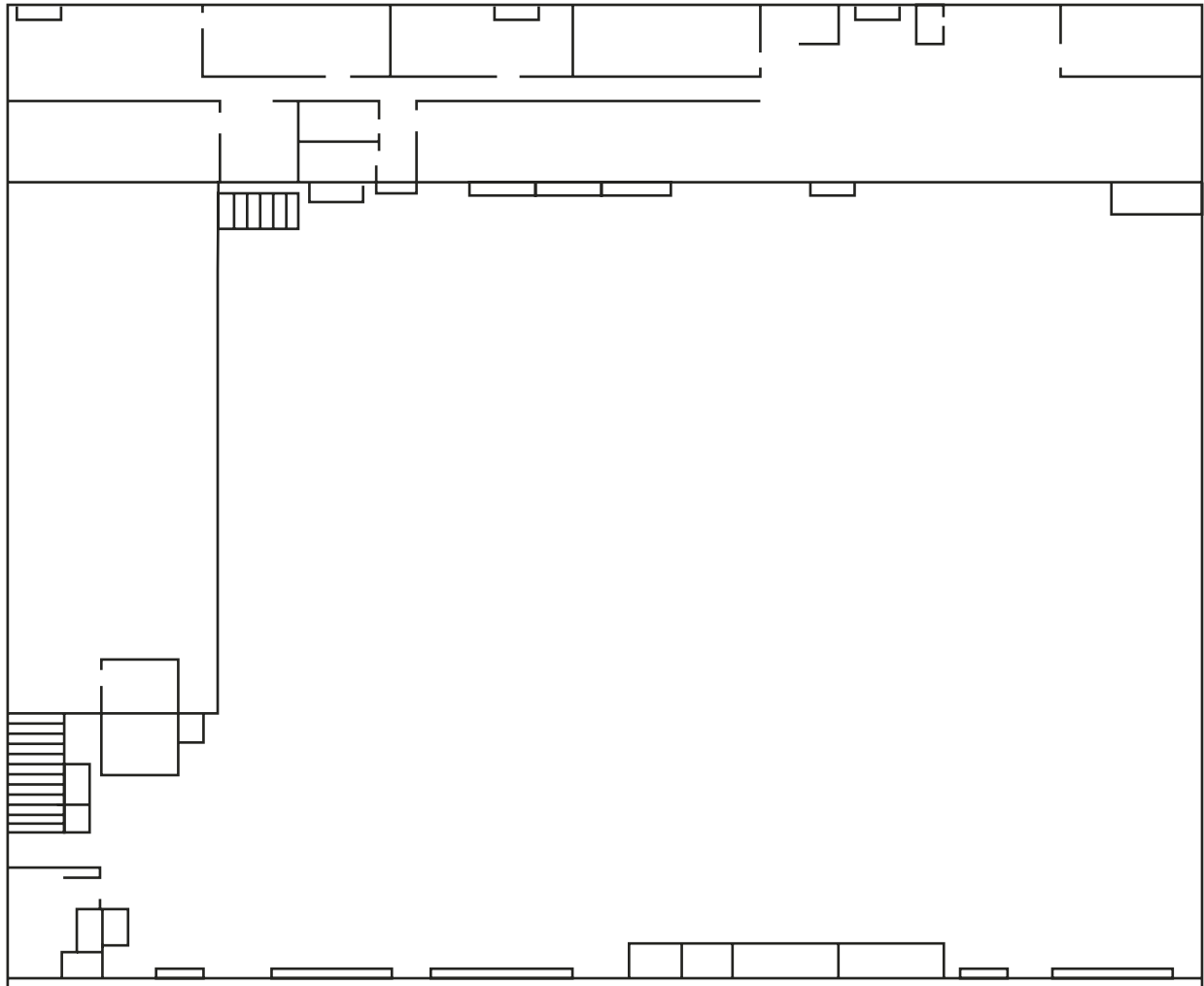
OPEN FLOORPLAN



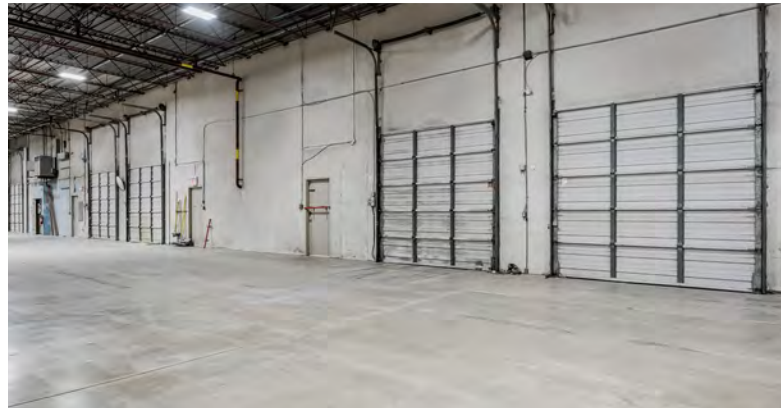
PRIVATE WASHROOM

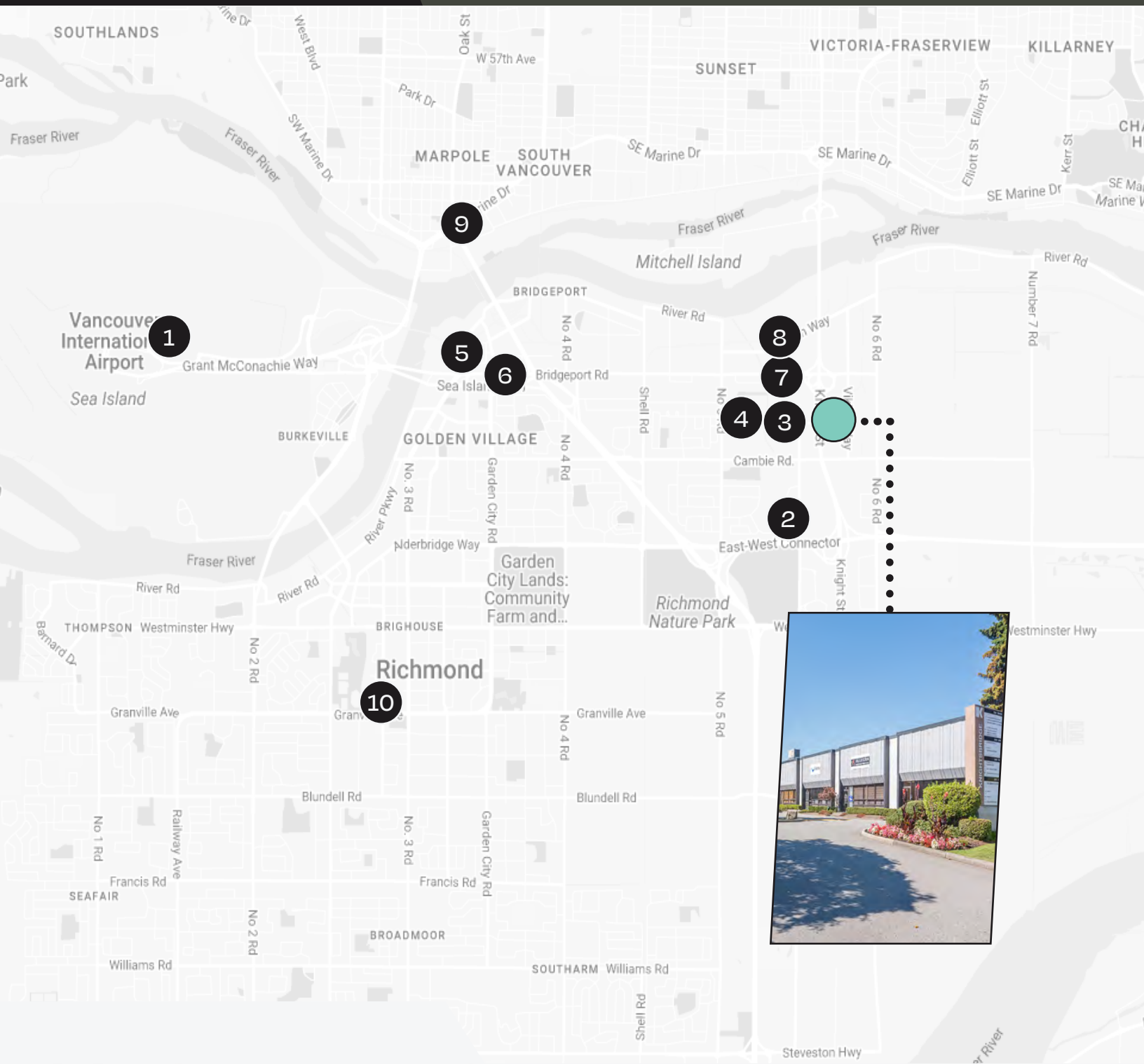
# // Unit 10

Spacious unit combining office and warehouse areas. The office includes private offices, restrooms, and a kitchen, while the warehouse provides flexible industrial space with a rear dock loading door. Additional storage lockers are included for tenant convenience. The unit totals approximately 18,215 square feet.



*\*Floor plan is for illustrative purposes only*





- |                                    |                                      |
|------------------------------------|--------------------------------------|
| 1. Vancouver International Airport | 6. Costco Wholesale                  |
| 2. Tim Hortons                     | 7. Staples                           |
| 3. IKEA Richmond                   | 8. The Home Depot                    |
| 4. Trail Appliances Richmond       | 9. Marine Drive Canada Line SkyTrain |
| 5. Bridgeport Canada Line SkyTrain | 10. CF Richmond Centre               |



For more information, please contact:



## Christopher O'Neill

Personal Real Estate Corporation

**VICE PRESIDENT**

+1 604 764 0907

[christopher@floorspace.ca](mailto:christopher@floorspace.ca)

FLOORSPACE // 900 WEST HASTINGS ST., SUITE 520, VANCOUVER, BC CANADA, V6C 1E5 // [WWW.FLOORSPACE.CA](http://WWW.FLOORSPACE.CA)

This document has been prepared by Floorspace Commercial Inc. for advertising and general information only. All information contained herein is from sources we deem reliable, and we have no reason to doubt its accuracy; however, no guarantee or responsibility is assumed thereof, and it shall not form any part of future contracts. Property information is submitted subject to errors and omissions, and all information should be carefully verified. Any interested party should undertake their own inquiries as to the accuracy of the information. All measurements quoted herein are approximate. This publication is the copyrighted property of Floorspace Commercial Inc. and/or its licensor(s). Copyright © 2026 Floorspace Commercial Inc.