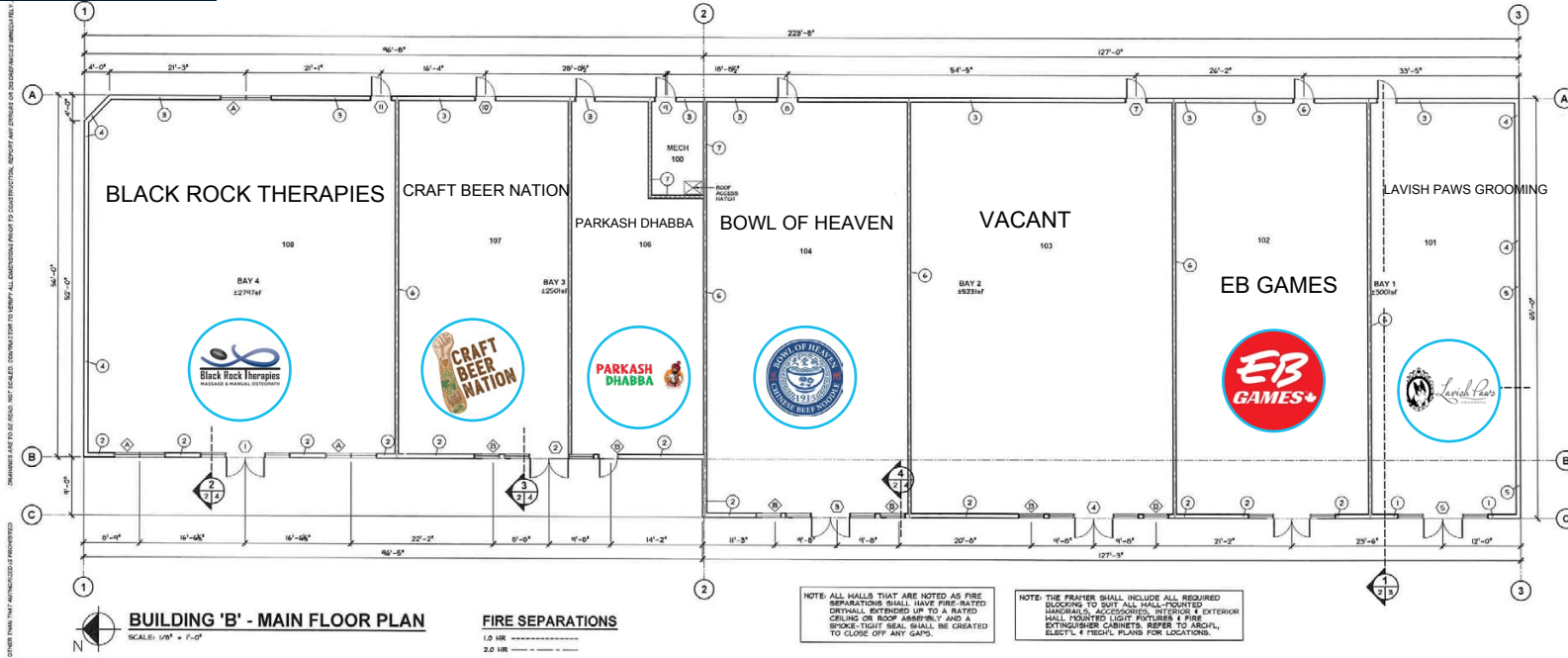


FLOOR PLAN



BUILDING 'B' - MAIN FLOOR PLAN
SCALE: 1/8" = 1'-0"

FIRE SEPARATIONS
1.0 HR
2.0 HR

NOTE: ALL WALLS THAT ARE NOTED AS FIRE SEPARATIONS SHALL HAVE FIRE-RATED DRYWALL EXTENDED UP TO A RATED CEILING OR ROOF ASSEMBLY AND A SMOKE-TIGHT SEAL SHALL BE CREATED TO CLOSE OFF ANY GAPS.

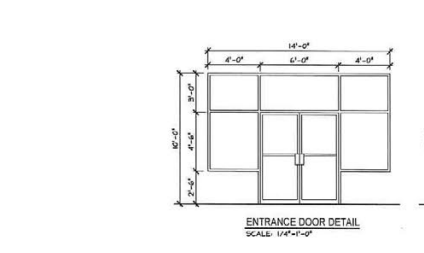
NOTE: THE FRAMES SHALL INCLUDE ALL REQUIRED HANDRAILS, ACCESSORIES, INTERIOR & EXTERIOR WALL MOUNTED LIGHT FIXTURES & FIRE EXTINGUISHER CABINETS. REFER TO ARCHT. ELECTR. & MECH. PLANS FOR LOCATIONS.

WALL CONSTRUCTION SCHEDULE

- 1. UP TO 2'-4" A.F.F.
MANUFACTURED STONE VENEER
CMU CONT. STONE CAP
ON PORTLAND BED #4
3" PATENT GYPSUM BOARD METAL LATH
2" LAYER OF WATER RESISTANT BARRIER
1" RIGID INSULATION
1/2" TYVEK AIR BARRIER
1/2" SHEATHING
2x6 WOOD STUDS
ROOF FINISH
ROOF FINISH
- 2. UP TO 2'-4" A.F.F.
MANUFACTURED STONE VENEER
CMU CONT. STONE CAP
ON PORTLAND BED #4
3" PATENT GYPSUM BOARD METAL LATH
2" LAYER OF WATER RESISTANT BARRIER
1" RIGID INSULATION
1/2" TYVEK AIR BARRIER
1/2" SHEATHING
2x6 WOOD STUDS
ROOF FINISH
ROOF FINISH
- 3. UP TO 2'-4" A.F.F.
ACRYLIC STUCCO FINISH
R/4 FIBERGLASS FESH (SEE ELEV'S FOR FINISHES AND EXTENTS)
OVER 2" RIGID INSULN (E.I.F.S.)
1/2" TYVEK AIR BARRIER
1/2" SHEATHING
2x6 WOOD STUDS
ROOF FINISH
ROOF FINISH
- 4. UP TO 2'-4" A.F.F.
ACRYLIC STUCCO FINISH
R/4 FIBERGLASS FESH (SEE ELEV'S FOR FINISHES AND EXTENTS)
2" ROCKWOOL EXTERIOR RIGID INSULN
1/2" TYVEK AIR BARRIER
1/2" PENOGLOSS GOLD
1/2" STEEL STUDS
ROOF FINISH
ROOF FINISH
- 5. UP TO 2'-4" A.F.F.
ACRYLIC STUCCO FINISH
R/4 FIBERGLASS FESH (SEE ELEV'S FOR FINISHES AND EXTENTS)
2" ROCKWOOL EXTERIOR RIGID INSULN
1/2" TYVEK AIR BARRIER
1/2" PENOGLOSS GOLD
1/2" STEEL STUDS
ROOF FINISH
ROOF FINISH
- 6. UP TO 2'-4" A.F.F.
ACRYLIC STUCCO FINISH
R/4 FIBERGLASS FESH (SEE ELEV'S FOR FINISHES AND EXTENTS)
2" ROCKWOOL EXTERIOR RIGID INSULN
1/2" TYVEK AIR BARRIER
1/2" PENOGLOSS GOLD
1/2" STEEL STUDS
ROOF FINISH
ROOF FINISH
- 7. ROOF FINISH
2-LAYERS 5/8" TYPE 'X' DRYWALL
1/2" RIGID INSULATION
1/2" TYVEK AIR BARRIER
1/2" SHEATHING
2x6 WOOD STUDS
ROOF FINISH
ROOF FINISH

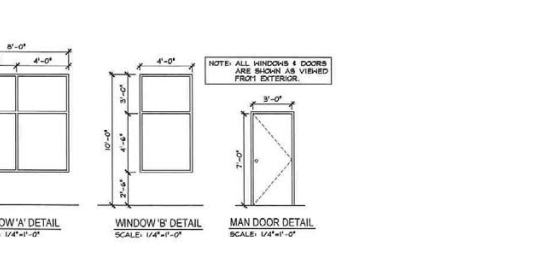
WINDOW SCHEDULE

NO.	SIZE	QTY	GLAZING	FRAMES	RATING	TYPE	NOTES
1	14'-0" x 8'-0"	1	LOW-E ARGON-GAS FILLED UNIGLASS	ALUMINUM	2.0	MAN DOOR	SEE DETAIL
2	8'-0" x 8'-0"	1	LOW-E ARGON-GAS FILLED UNIGLASS	ALUMINUM	2.0	WINDOW	SEE DETAIL
3	8'-0" x 8'-0"	1	LOW-E ARGON-GAS FILLED UNIGLASS	ALUMINUM	2.0	WINDOW	SEE DETAIL
4	8'-0" x 8'-0"	1	LOW-E ARGON-GAS FILLED UNIGLASS	ALUMINUM	2.0	WINDOW	SEE DETAIL
5	8'-0" x 8'-0"	1	LOW-E ARGON-GAS FILLED UNIGLASS	ALUMINUM	2.0	WINDOW	SEE DETAIL



DOOR SCHEDULE

NO.	SIZE	CONST./FINISH	FRAMES	HARDWARE	GLAZING	RATING	NOTES
1	8'-0" x 8'-0"	ALUMINUM	ALUMINUM	ALUMINUM	LOW-E ARGON-GAS FILLED UNIGLASS	2.0	SEE MANSARD DOOR DETAIL



Axiom Architecture Inc.
Suite 101, 701 Leva Avenue Red Deer County AB T4E 0A5
PH: 403-359-2871 www.axiom.ca

COOMAN ENGINEERING & DESIGN
1000-10th Street S.E. Red Deer, Alberta T4E 0A5
PH: 403-359-2871 www.cooman.ca

RECORD DRAWINGS
RECORD DRAWINGS ARE BASED ON THE MARKED UP FIELD ARCHITECTURAL DRAWINGS SUBMITTED AUGUST, 2021

PROJECT INFORMATION:
LEVA AVE. BLDG 'B' COMMERCIAL DEVELOPMENT

LOT 17
BLOCK 2
PLAN: 142 882
CNA ADDRESS: NORTH LEVA AVENUE
RED DEER COUNTY, ALBERTA

STAMP:

NO.	DATE	DESCRIPTION
1	2021-08-31	RECORD DRAWING AS BUILT
2	2018-05-21	ISSUED FOR COORDINATION

REVISIONS:

NO.	DATE	DESCRIPTION
1	2021-08-31	RECORD DRAWING AS BUILT
2	2018-05-21	ISSUED FOR COORDINATION

DRAWING TITLE
FLOOR PLAN & SCHEDULES

JOB NUMBER: 15028
DATE: JULY 24 2018
DRAWN BY: COOMAN

FOR LEASE
179 Leva Avenue,
Red Deer County AB

NOAH ISSA
780-236-5723
noah@sablerealty.ca

ALI SHABEN
780-446-8622
ali@sablerealty.ca

MAHMOUD SALEM
780-807-6597
msalem@sablerealty.ca

SABLE REALTY