

789

Murray St

WALLACEBURG, ONTARIO

POWER OF SALE - GAS BAR

Asking Price - \$2,000,000



CBRE



The Location

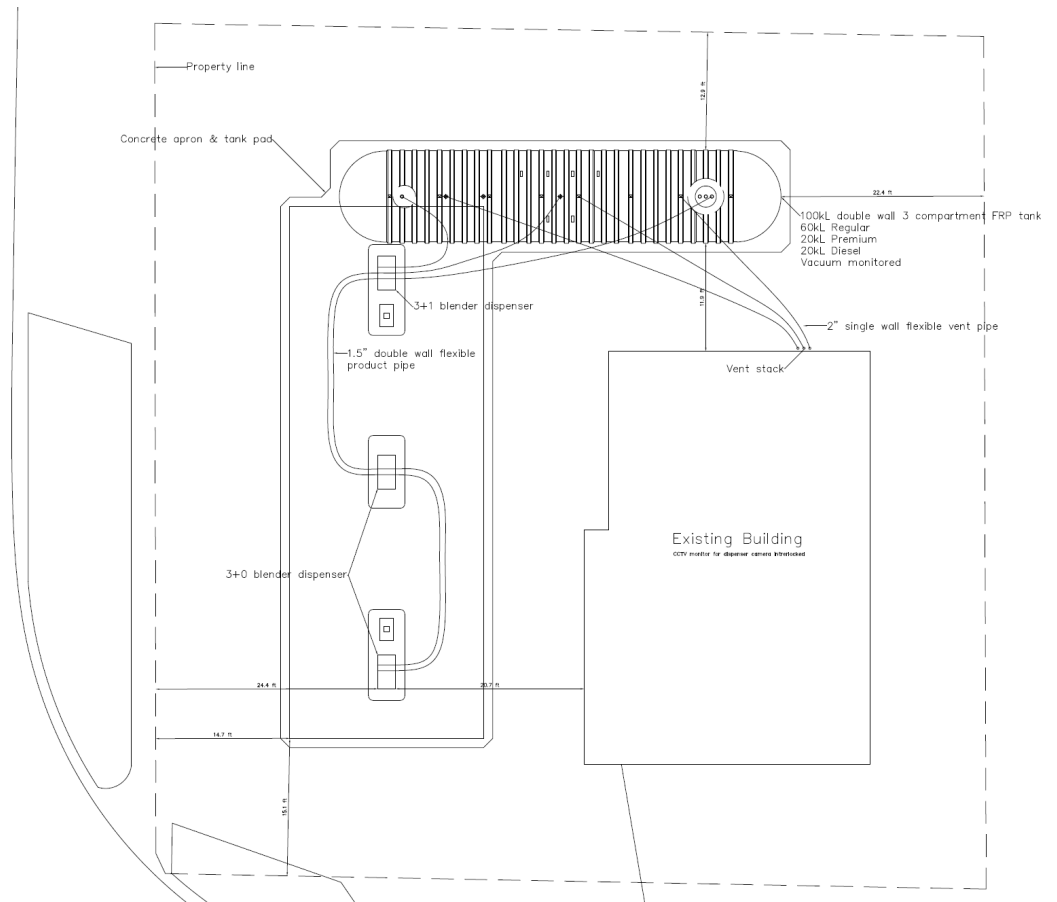
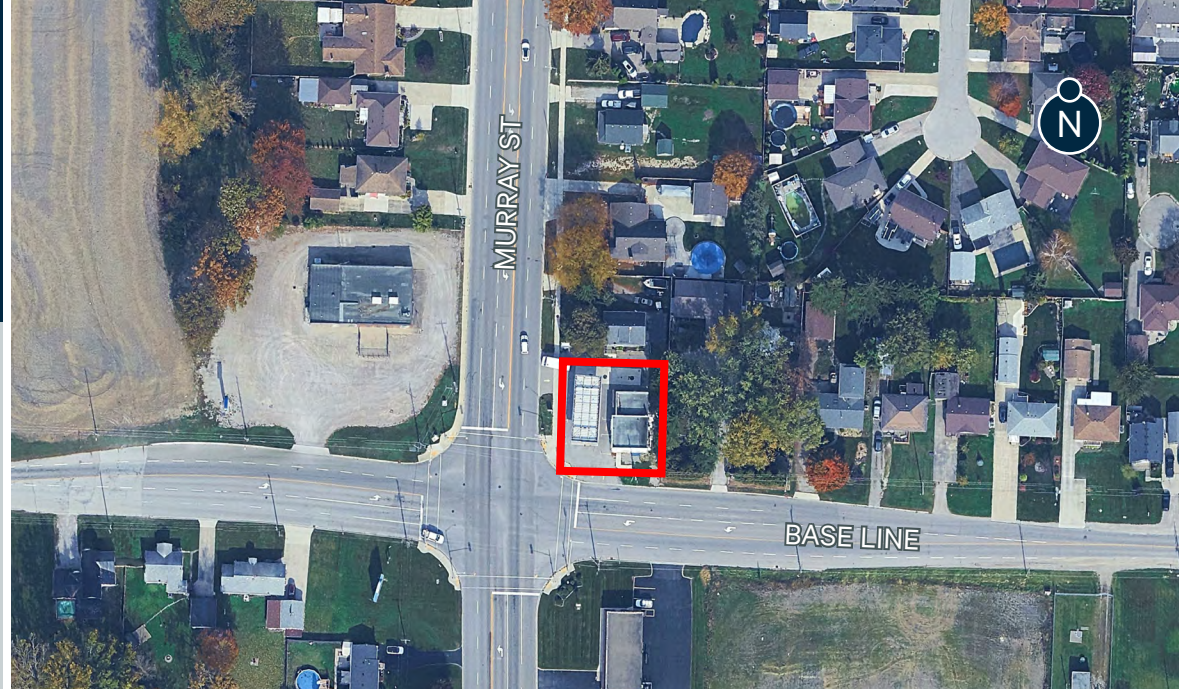
The gas bar is located at the corner of Murray Street (Hwy 40) and Base Line, capturing the traffic commuting along Hwy 40 between Wallaceburg and Chatham.

Wallaceburg, Ontario, is a vibrant community located in Chatham-Kent, known for its rich history and strong industrial base. The economy is driven primarily by manufacturing, agriculture, and service industries. Major employers in the area include large manufacturers and local businesses that contribute to the economic landscape.

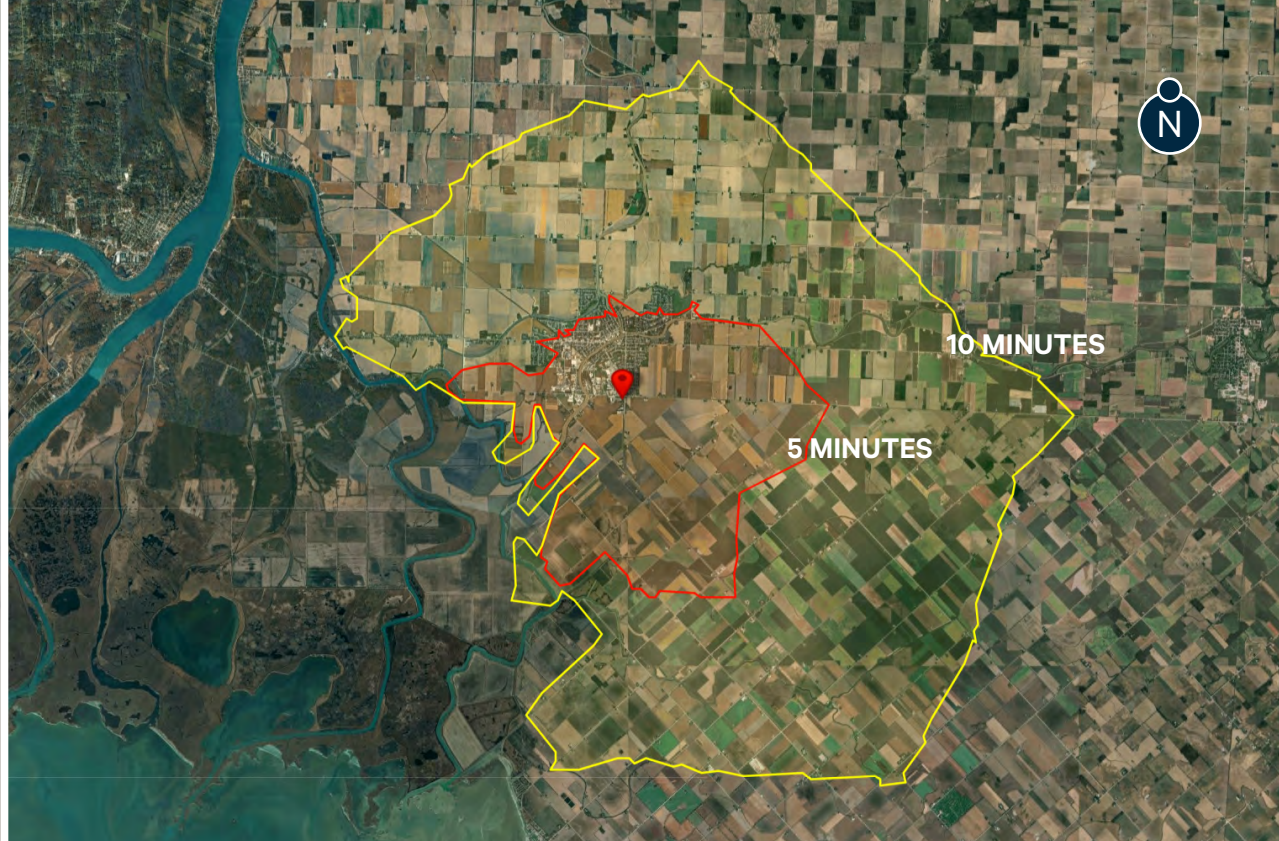
Tourism in Wallaceburg is bolstered by its scenic waterfront, recreational opportunities, and cultural attractions, including the Wallaceburg and District Museum, which showcases the town's history. Nearby parks and trails attract visitors for outdoor activities, enhancing the area's appeal.

Property Details

- Asking Price: \$2,000,000
- Size: 8,923 Sq. Ft. (0.20 AC)
- Retail building: 1,356 Sq. Ft.
- Fuel dispensers: 3
- Underground fuel storage tank installed in 2019
- Canopy: 1,438 Sq. Ft.
- Asphalt paved
- PIN: 005540643
- Legal Description: PART OF LOT R, PLAN 418, DESIGNATED AS PART 3, 24R9300 SUBJECT TO AN EASEMENT OVER PART 4, 24R9477 IN FAVOUR OF PART OF LOT R, PLAN 418, DESIGNATED AS PART 2, 24R9300 AS IN CK87241 MUNICIPALITY CHATHAM-KENT



Demographic Snapshot



10 Minute Drive Time

13,825

POPULATION

5,854

OF HOUSEHOLDS

46.6

MEDIAN AGE

\$86,745

AVG. HOUSEHOLD
INCOME

1.3%

EXPECTED POPULATION
GROWTH (2024 - 2029)

\$17,899,148

TOTAL SPEND - GAS

\$3,085

AVG. HOUSEHOLD
SPEND - GAS

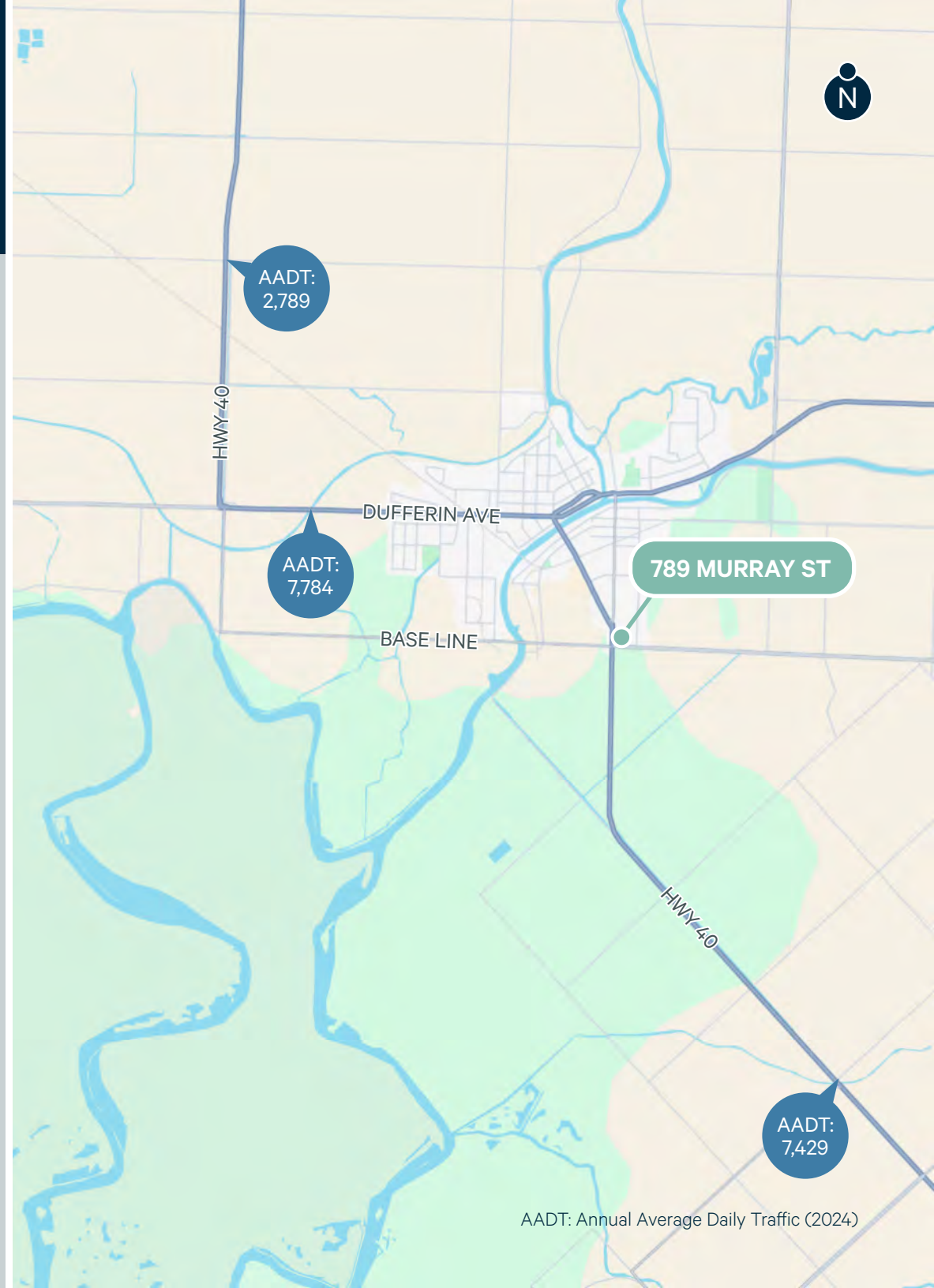
Zoning & AADT

UC(HC1)-1228 - Highway Commercial First Density

Some permitted uses include:

- Automobile Repair Shop
- Automobile Sales and Service Establishment
- Automobile Service Station
- Bank/Financial Institution
- Beer/Liquor Store
- Builder's Supply Yard
- Car Wash
- Clinic
- Commercial Entertainment
- Dry Cleaning Establishment
- Eating Establishment
- Gas Bar
- Hotel/Motel
- Laundromat
- Mixed Use Commercial/Residential Building
- Nursery
- Office
- Personal Service Establishment
- Retail Store
- Service or Repair Shop
- Service Trade Establishment

Note: Prospective purchaser must satisfy themselves as to whether their intended use complies with the Zoning By-law.



Property Photos



789 *Murray St*

WALLACEBURG, ONTARIO

FOR MORE INFORMATION, PLEASE CONTACT



Steven Weiss*

Vice President

+1 416 495 6317

steven.weiss@cbre.com



Susanne Reid*

Senior Vice President

+1 416 495 6224

susanne.reid@cbre.com



Jennifer Crawford*

Senior Sales Associate

+1 416 495 6234

jennifer.crawford@cbre.com



Chelsea Thom*

Vice President

+1 416 495 6272

chelsea.thom@cbre.com



Matthew Jackson**

Vice President

+1 416 495 6294

matthew.jackson@cbre.com

Prospective buyers should contact listing agents for a schedule to be attached to all offers.

*Sales Representative **Broker | All outlines are approximate | CBRE Limited, Brokerage | 2005 Sheppard Ave E, Suite 800, Toronto ON M2J 5B4 | www.cbre.ca

This disclaimer shall apply to CBRE Limited, Real Estate Brokerage, and to all other divisions of the Corporation; to include all employees and independent contractors ("CBRE"). The information set out herein, including, without limitation, any projections, images, opinions, assumptions and estimates obtained from third parties (the "Information") has not been verified by CBRE, and CBRE does not represent, warrant or guarantee the accuracy, correctness and completeness of the Information. CBRE does not accept or assume any responsibility or liability, direct or consequential, for the Information or the recipient's reliance upon the Information. The recipient of the Information should take such steps as the recipient may deem necessary to verify the Information prior to placing any reliance upon the Information. The Information may change and any property described in the Information may be withdrawn from the market at any time without notice or obligation to the recipient from CBRE. CBRE and the CBRE logo are the service marks of CBRE Limited and/or its affiliated or related companies in other countries. All other marks displayed on this document are the property of their respective owners. All Rights Reserved. Mapping Sources: Canadian Mapping Services canadamapping@cbre.com; MapPoint, DMTI Spatial, Environics Analytics, Microsoft Bing, Google Earth

CBRE