

FOR LEASE | 1,482 Sq. Ft.



CBRE

Suite 1260

4871

Shell Road

RICHMOND | BC



Michael White

Vice President

CBRE Limited | Office Leasing & Sales

Michael.RM.White@cbre.com

604 662 5120

#1260 - 4871 SHELL ROAD

“Where Natural Light Meets Everyday Function”

Set in the heart of Richmond, this corner, first-floor office offers a rare balance of visibility, light, and everyday ease, set within an established business pocket with seamless access to Highway 91 and 99, and just minutes from Vancouver International Airport.

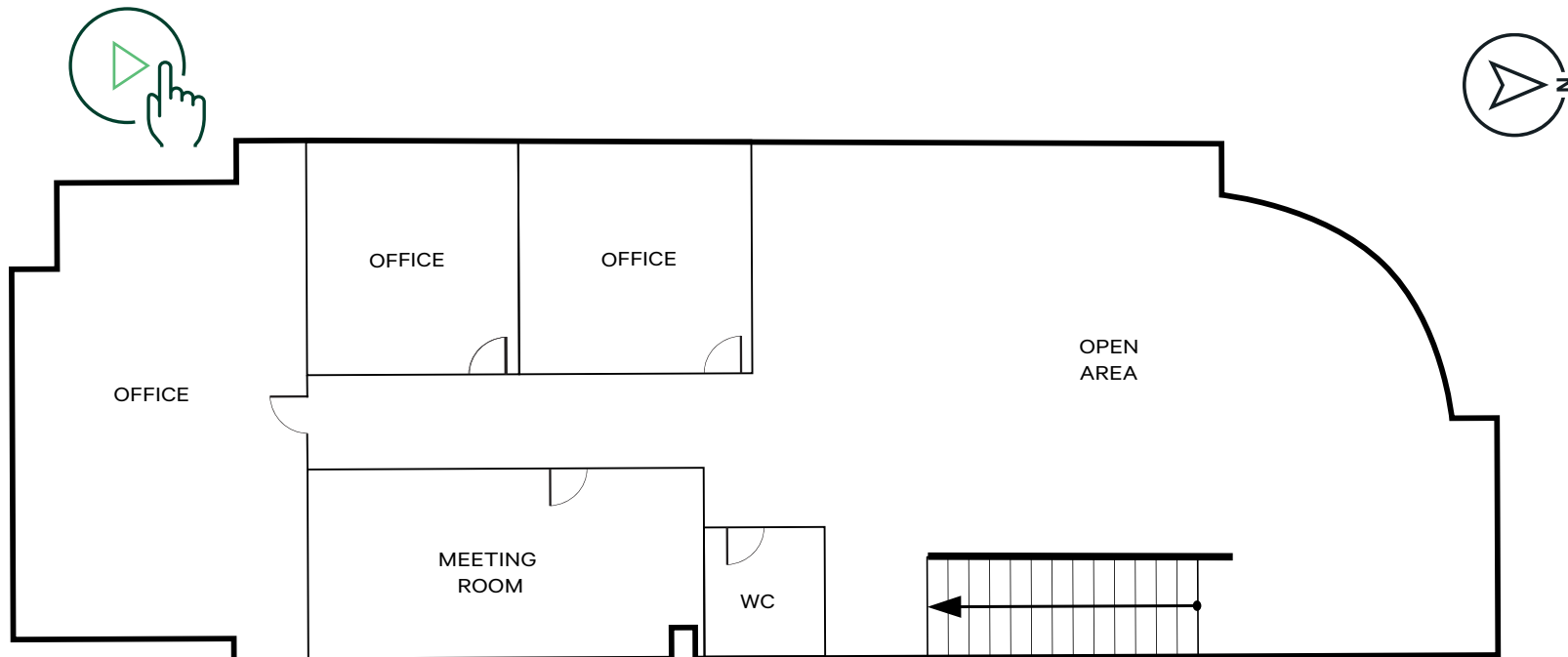
Suite: 1260

Size (Sq. Ft.): 1,482 Sq. Ft.
(Approx rentable area)

Available: Immediately

Gross Rent: Contact Listing Agent

Parking: 2 Stalls





Suite Features

- 3 Private Offices
- 1 Meeting Room
- Open Area





Michael White

Vice President

CBRE Limited | Office Leasing & Sales

Michael.RM.White@cbre.com

604 662 5120



Close Proximity
**to Richmond
Hospital**



Close Proximity
**to YVR
Airport**



Drive Times

Vancouver International Airport	11 min
Canada/US Border	28 min
Downtown Vancouver	30 min

This disclaimer shall apply to CBRE Limited, Real Estate Brokerage, and to all other divisions of the Corporation; to include all employees and independent contractors ("CBRE"). The information set out herein, including, without limitation, any projections, images, opinions, assumptions and estimates obtained from third parties (the "Information") has not been verified by CBRE, and CBRE does not represent, warrant or guarantee the accuracy, correctness and completeness of the Information. CBRE does not accept or assume any responsibility or liability, direct or consequential, for the Information or the recipient's reliance upon the Information. The recipient of the Information should take such steps as the recipient may deem necessary to verify the Information prior to placing any reliance upon the Information. The Information may change and any property described in the Information may be withdrawn from the market at any time without notice or obligation to the recipient from CBRE. CBRE and the CBRE logo are the service marks of CBRE Limited and/or its affiliated or related companies in other countries. All other marks displayed on this document are the property of their respective owners. All Rights Reserved. Mapping Sources: Canadian Mapping Services canadamapping@cbre.com; DMTI Spatial, EnviroNics Analytics, Microsoft Bing, Google Earth. Properties and details may change or be withdrawn without notice. Some content may have been generated in whole or in part using generative AI (Artificial Intelligence).