



999 DE MAISONNEUVE



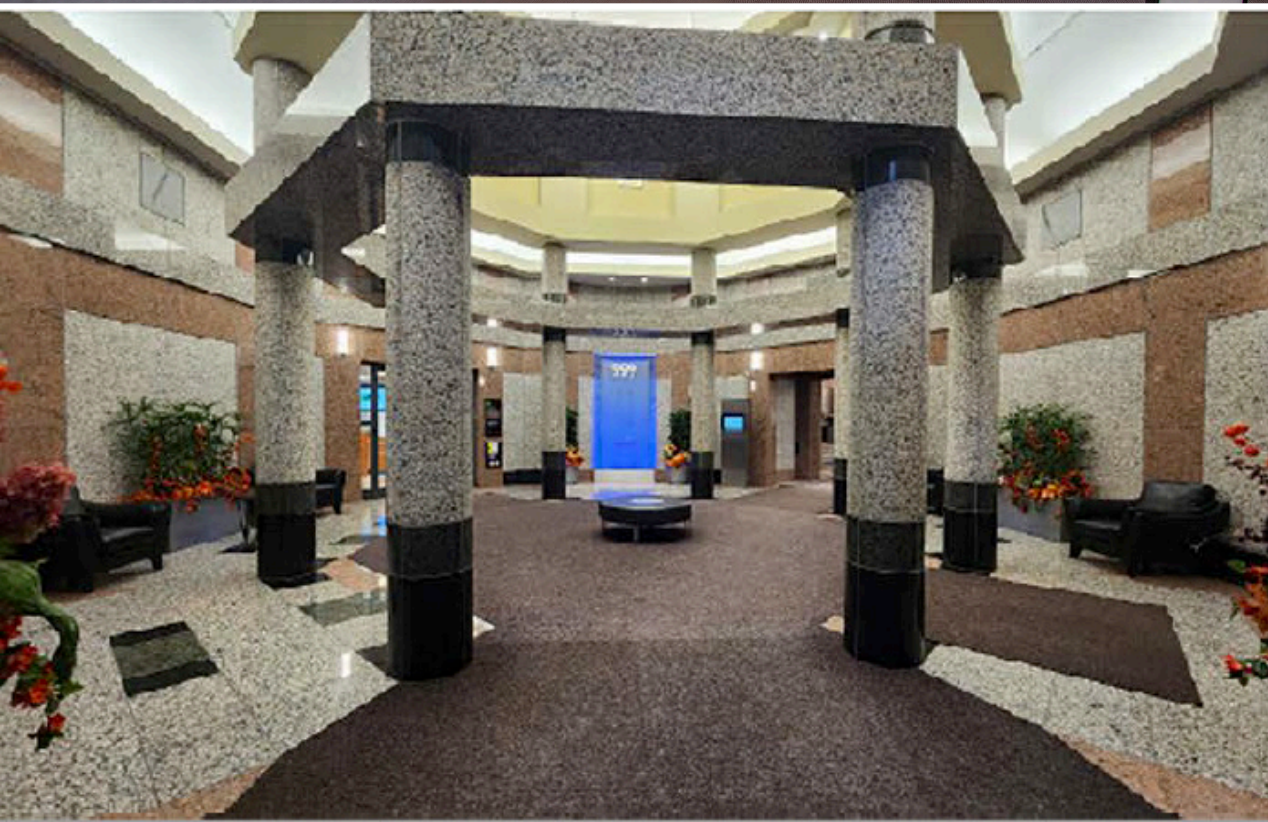
999 DE MAISONNEUVE

- 18 floors
- Built in 1990
- Building area: 230,942 Sq.Ft.
- BOMA BEST Silver
- Security 24/7
- Underground parking
- Secure bicycle parking
- Conference Centre
- Private gym
- Near Peel and McGill metro stations as well as the downtown REM station
- Connected to the underground network
- Near Dorchester Square
- 900 metres from Mont-Royal walking path access
- In proximity to multiple services, restaurants and boutiques



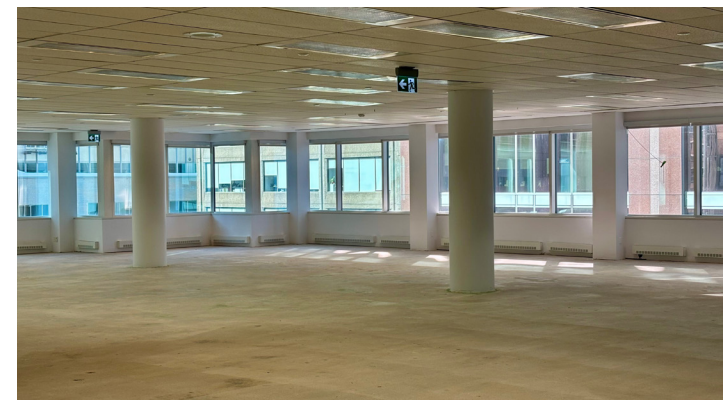
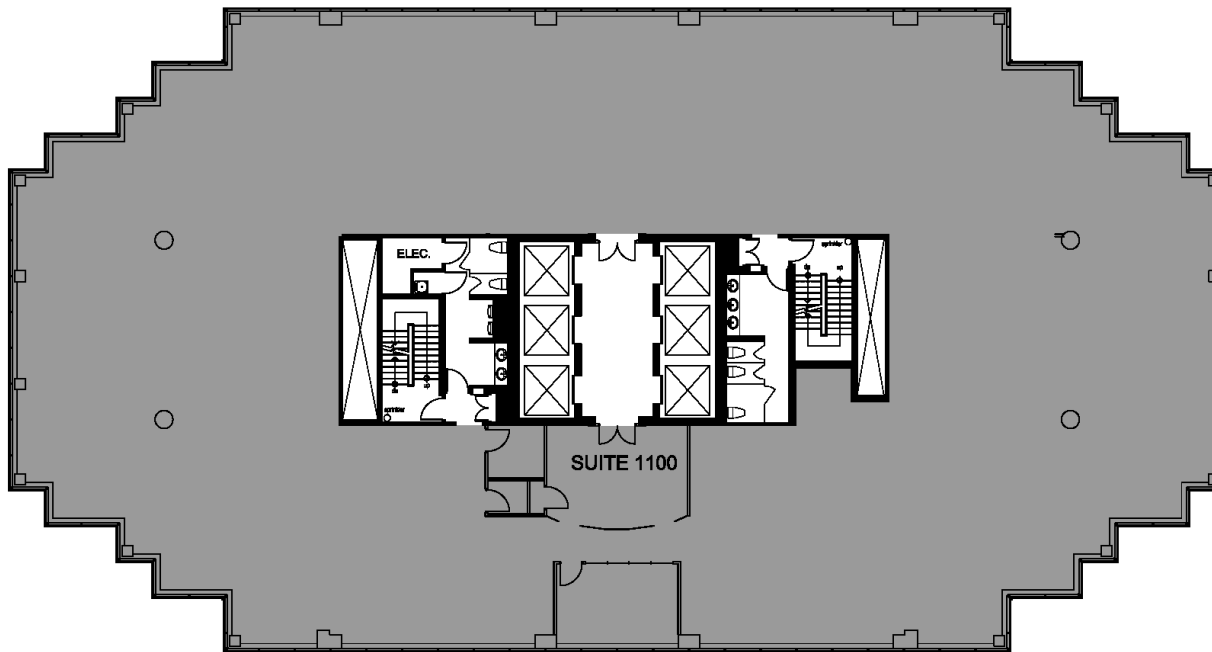


BGO
Properties



SUITE
1 100
12,799
SQ.FT.

Located in a bright and modern environment, this suite is ideal for any company looking to optimize its layout. Completely open, it offers great flexibility to adapt to your specific needs, whether it's collaborative spaces, private offices, or lounging areas.



ADDITIONAL RENT 2025

Total	\$29.89
Realty tax	\$10.34
Utilities	\$1.31
Operating expenses	\$18.24

PARKING

Not reserved \$280/month+tx

DOMINIQUE SAUCIER

Vice-President, Leasing

+ 1 514 686-9497

dominique.saucier@bgo.com

[View Online](#)