

460

COMMERCIAL

FOR SALE
\$850,000



#203 – 6545 Portsmouth Rd
Nanaimo, BC

OPPORTUNITY

Located in the prestigious Portsmouth Professional Centre – recipient of the 2020 Award of Excellence from the Vancouver Island Real Estate Board – Unit 203 offers 1,496 Sq. Ft. of well-designed office space.

John Hankins
c. 250 713 9830 o. 250 753 5757 ex.432
jhankins@460commercial.com

460 Commercial Inc.
2-1551 Estevan Road
Nanaimo, BC

#203 – 6545 Portsmouth Rd Nanaimo, BC

DETAILS

- This second-floor unit opens into a spacious reception area and features a dedicated meeting room, three private offices, a large data/storage room, kitchen area, and private washroom.
- Positioned in Nanaimo's busy north end, the property has ample off-street parking.
- The Centre is home to a range of respected professionals in the health, legal, financial and education sectors, making it an ideal environment for businesses seeking a polished, professional setting.
- Key Features:
 - 1,496 Sq. Ft. office space
 - Reception, 3 offices, meeting room
 - Kitchen and private washroom
 - Large storage/data room
 - Ample on-site parking
 - Prime north Nanaimo location

PROPERTY DETAILS

Legal Description

Strata Lot 11 District Lot 28
Wellington District Strata Plan
EPS1455 together with an
interest in the common property
on proportion to the unit
entitlement of the Strata Lot as
shown on the Form V

Zoning

CD6

Unit Size

1,496 Sq. Ft.

Price

\$850,000

Strata Fee

\$769.12 per month

2024 Property Tax

\$12,699

PICTURES



View of the 2nd floor unit



View of the Building
from Portsmouth
Road

PICTURES



Main entrance to the building



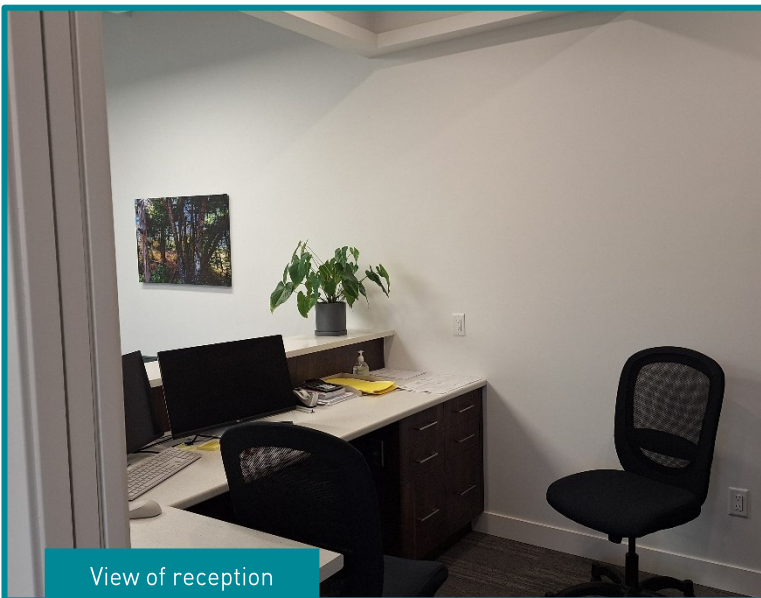
View showing pylon and building



Reception Area



Reception waiting area



View of reception area



Unit corridor showing entrance to meeting room

PICTURES



Meeting Room



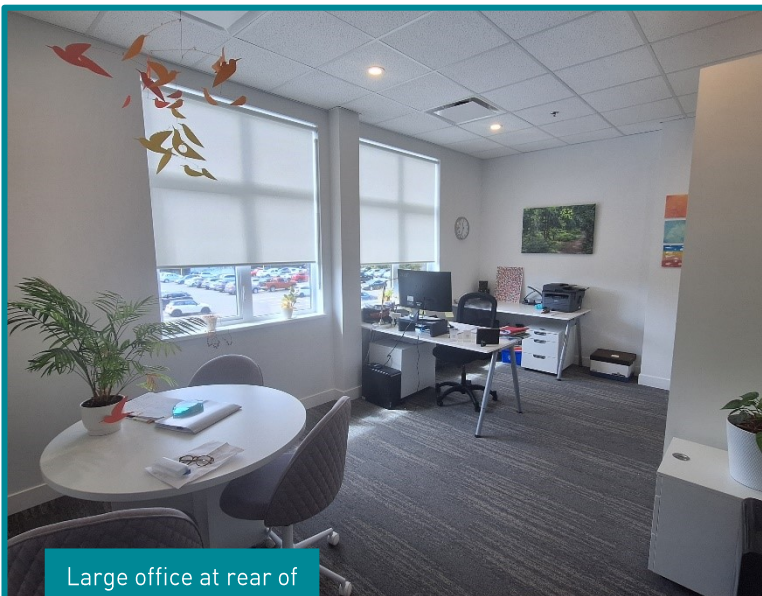
Office



2nd Office



3rd Office

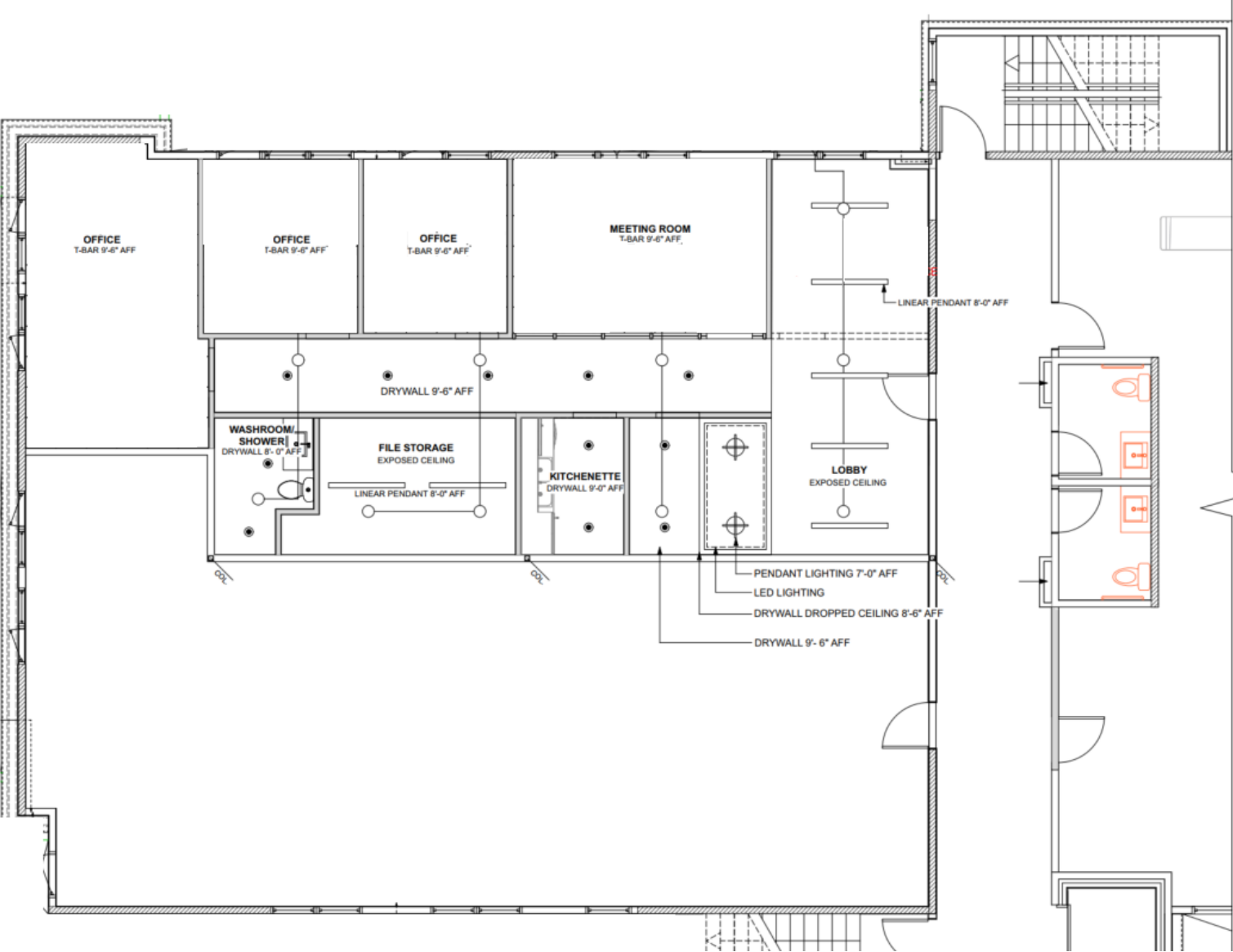


Large office at rear of the unit



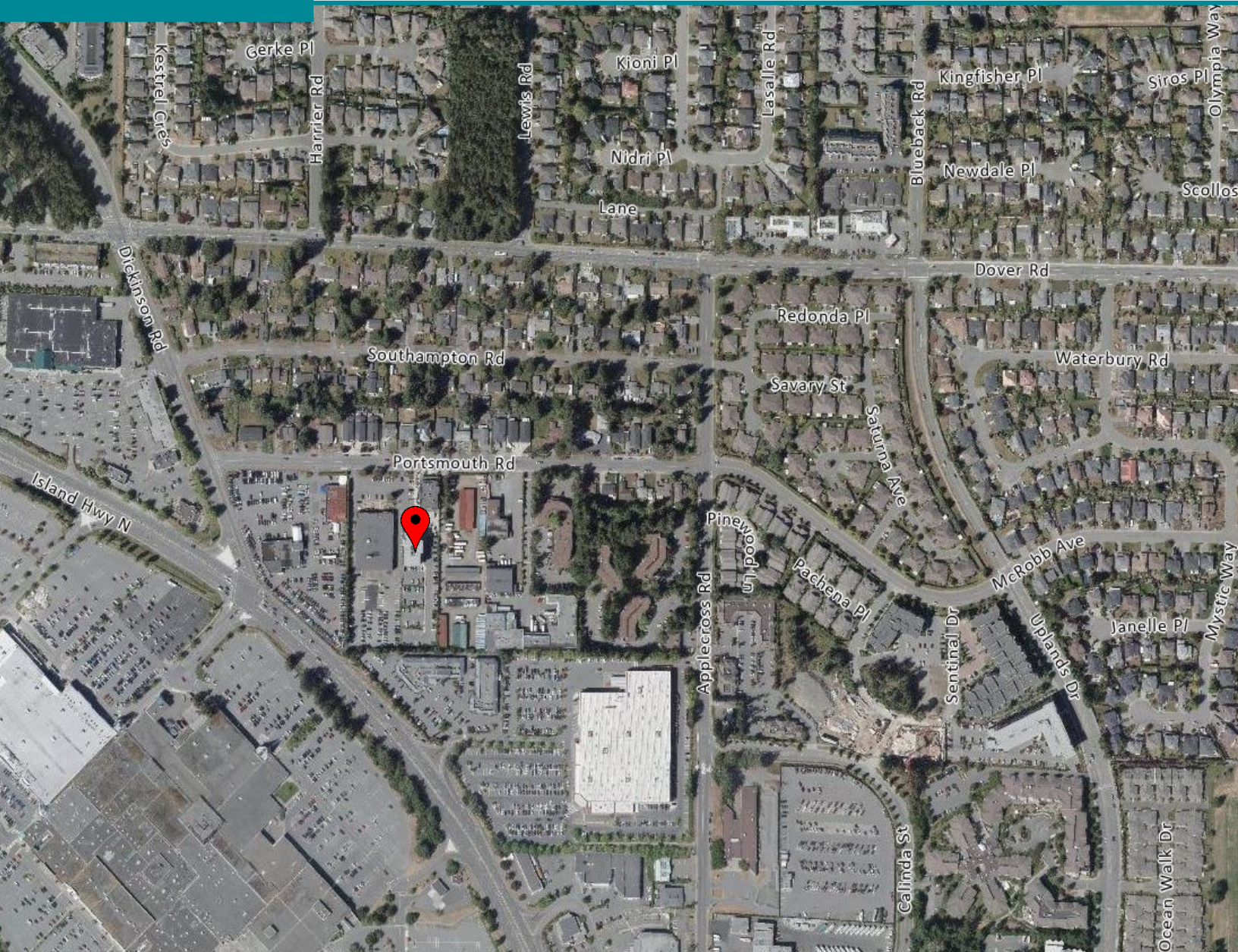
View of Rear carpark from the unit

FLOOR PLAN



MAP

6545 Portsmouth Road, Nanaimo BC



460

COMMERCIAL

John Hankins

c. 250-713-9830

jhankins@460commercial.com



NO WARRANTY OR REPRESENTATION, EXPRESS OR IMPLIED, IS MADE AS TO THE ACCURACY OF THE INFORMATION CONTAINED HEREIN, AND THE SAME IS SUBMITTED SUBJECT TO ERRORS, OMISSIONS, CHANGE OF PRICE, RENTAL OR OTHER CONDITIONS, PRIOR SALE, LEASE OR FINANCING, OR WITHDRAWAL WITHOUT NOTICE, AND OF ANY SPECIAL LISTING CONDITIONS IMPOSED BY OUR PRINCIPALS NO WARRANTIES OR REPRESENTATIONS ARE MADE AS TO THE CONDITION OF THE PROPERTY OR ANY HAZARDS CONTAINED THEREIN ARE ANY TO BE IMPLIED.

460 Commercial Inc.
2-1551 Estevan Road
Nanaimo, BC