

Office Space For Lease

1827 Woodward Drive
Ottawa, ON



Space Highlights

- +/- 780 sf to 2,158 sf of available office space.
- Large windows for abundant natural light
- Newly renovated washrooms and common area stairwells
- Direct access to public transit and Highway 417 E and W
- Onsite parking available at a ratio of 2:1000 sf
- Business internet with Advantage WiFi
- Speeds up to 1.5 Gbps available
- Pylon signage opportunities available

Get more information

David A. MacLeod

Sales Representative, Vice-President
D +1 613 696 2764
david.macleod@avisonyoung.com

Giorgio DiNardo

Sales Representative, Vice-President
D +1 613 696 2763
giorgio.dinardo@avisonyoung.com

Key Information

Address: 1827 Woodward Drive,
Ottawa, ON K2C 0P9

Location: Located near the corner of
Woodward Drive and Mait-
land Avenue

Year Built: 1969

Year Renovated: 2020

Building Size: 15,055 sf

Available Area: Suite 107 = 780 sf
Suite 302 = 2,158 sf
Suite 311 = 544 sf
Suite 312 = 336 sf } Suite 311 & 312
can be contiguous

Asking Net Rent: \$12.00 psf

Additional Rent: \$14.03 psf

Parking: ratio 2:1000 sf

Office Space For Lease

1827 Woodward Drive, Ottawa, ON



David A. MacLeod

Sales Representative, Vice-President
D +1 613 696 2764
david.macleod@avisonyoung.com

Giorgio DiNardo

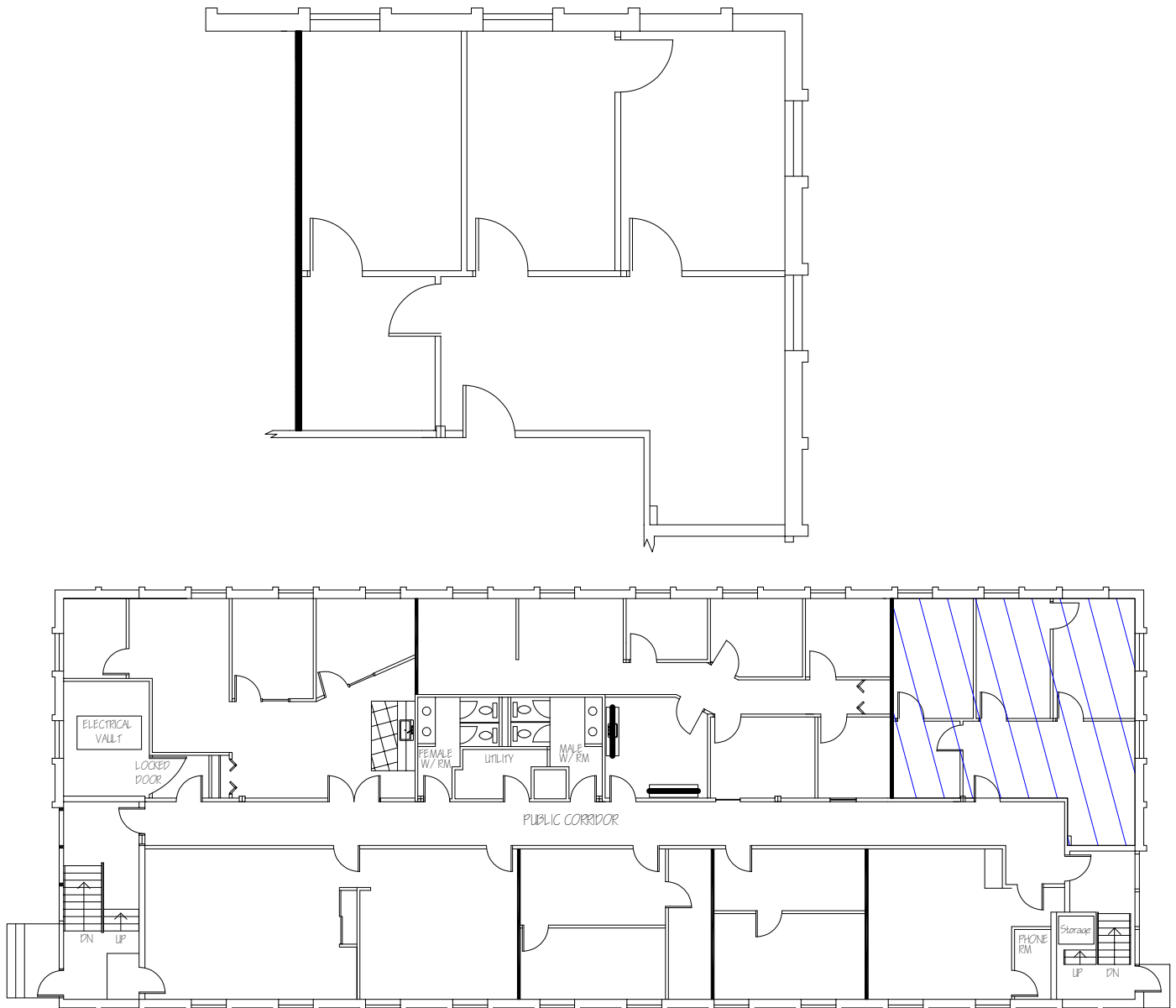
Sales Representative, Vice-President
D +1 613 696 2763
giorgio.dinardo@avisonyoung.com

Floor Plan

Office Space For Lease

1827 Woodward Drive
Ottawa, ON

Suite 107 = 780 sf



Floorplan not to scale

David A. MacLeod

Sales Representative, Vice-President
D +1 613 696 2764
david.macleod@avisonyoung.com

Giorgio DiNardo

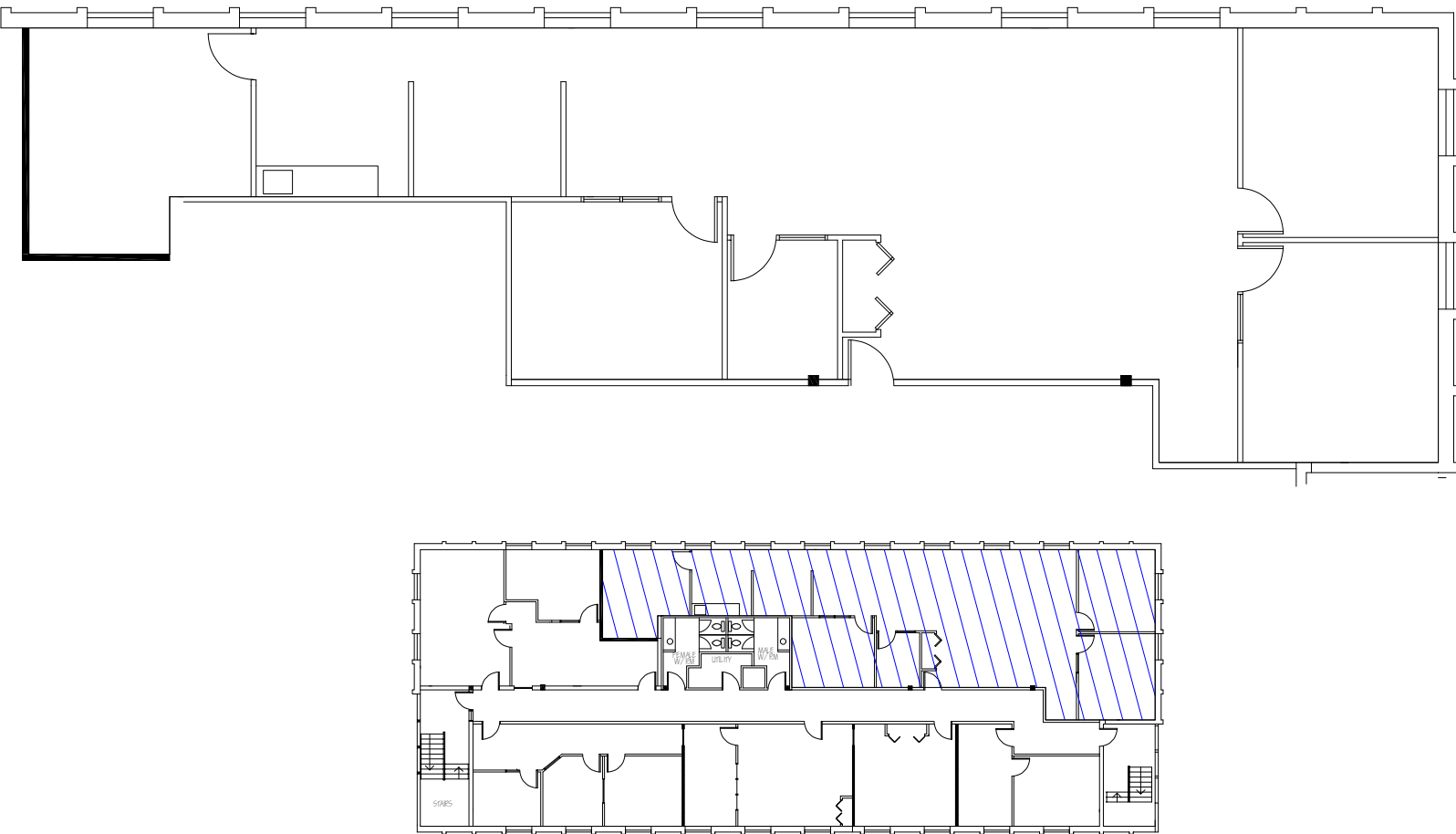
Sales Representative, Vice-President
D +1 613 696 2763
giorgio.dinardo@avisonyoung.com

Floor Plan

Office Space For Lease

1827 Woodward Drive
Ottawa, ON

Suite 302 = 2,158 sf



Floorplan not to scale

David A. MacLeod

Sales Representative, Vice-President
D +1 613 696 2764
david.macleod@avisonyoung.com

Giorgio DiNardo

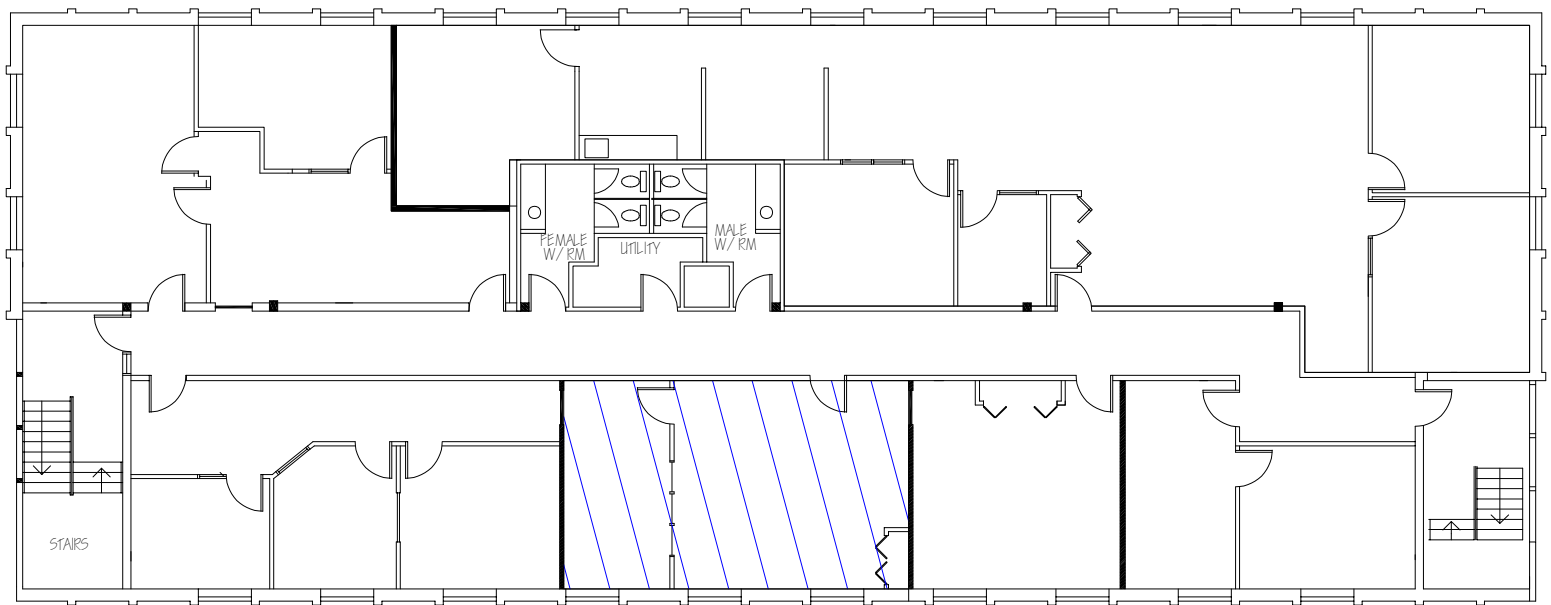
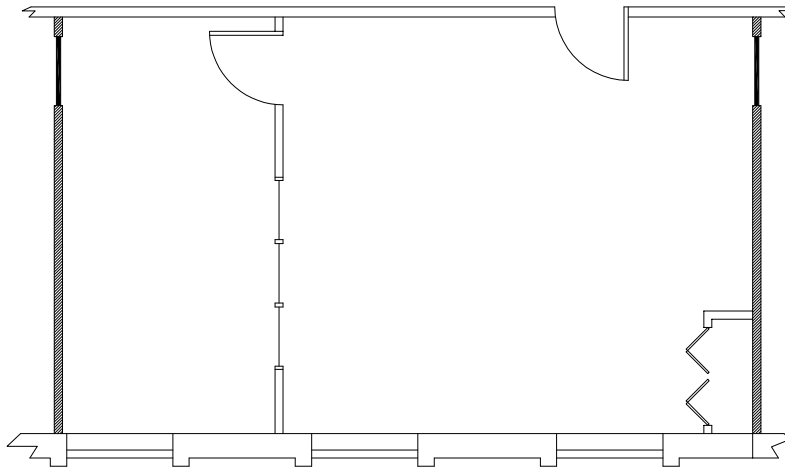
Sales Representative, Vice-President
D +1 613 696 2763
giorgio.dinardo@avisonyoung.com

Floor Plan

Office Space For Lease

1827 Woodward Drive
Ottawa, ON

Suite 311 = 544 sf (suite 311 & 312 can be contiguous)



Floorplan not to scale

David A. MacLeod

Sales Representative, Vice-President
D +1 613 696 2764
david.macleod@avisonyoung.com

Giorgio DiNardo

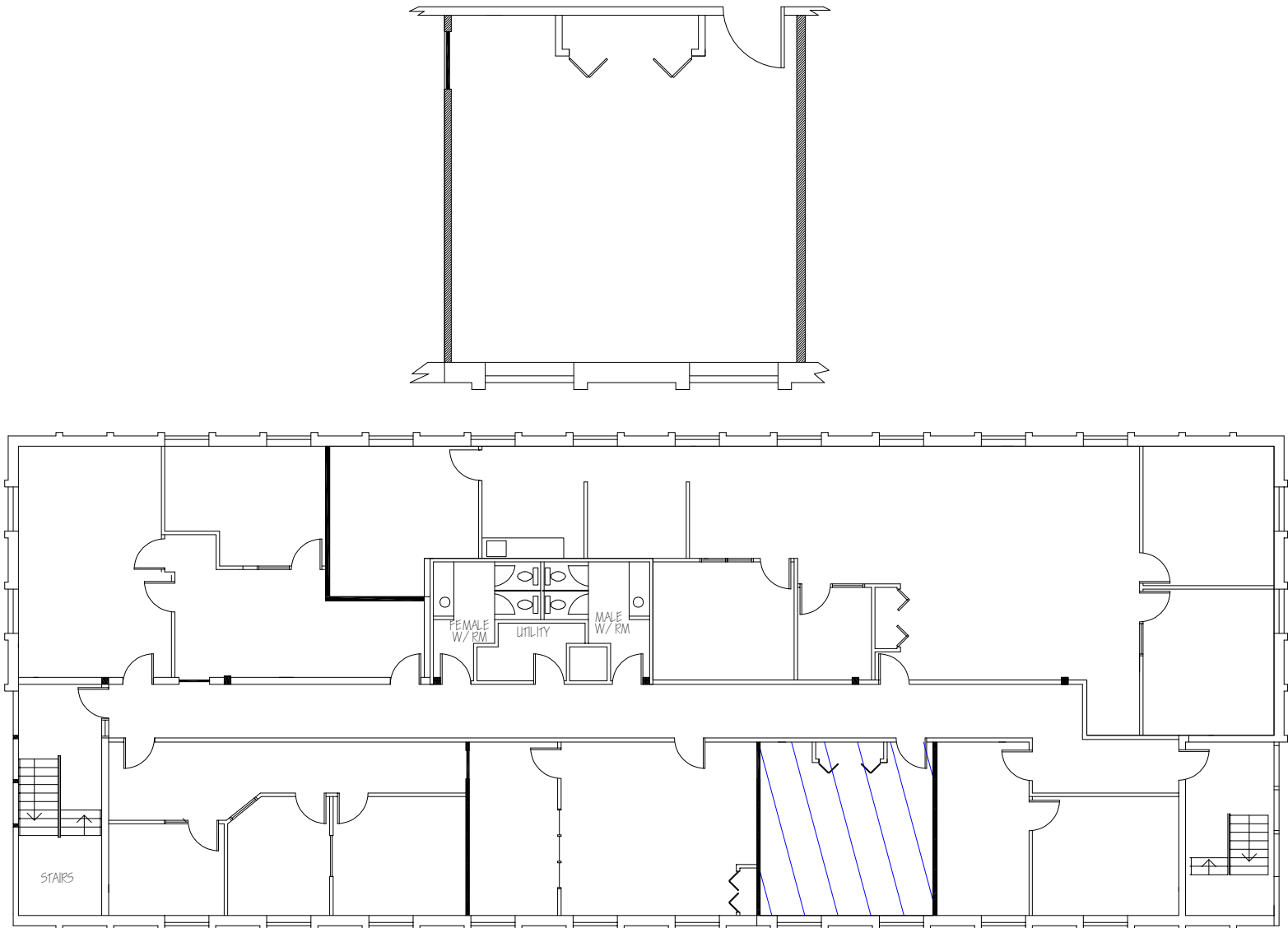
Sales Representative, Vice-President
D +1 613 696 2763
giorgio.dinardo@avisonyoung.com

Floor Plan

Office Space For Lease

1827 Woodward Drive
Ottawa, ON

Suite 312 = 336 sf (suite 311 & 312 can be contiguous)



Floorplan not to scale

David A. MacLeod

Sales Representative, Vice-President
D +1 613 696 2764
david.macleod@avisonyoung.com

Giorgio DiNardo

Sales Representative, Vice-President
D +1 613 696 2763
giorgio.dinardo@avisonyoung.com

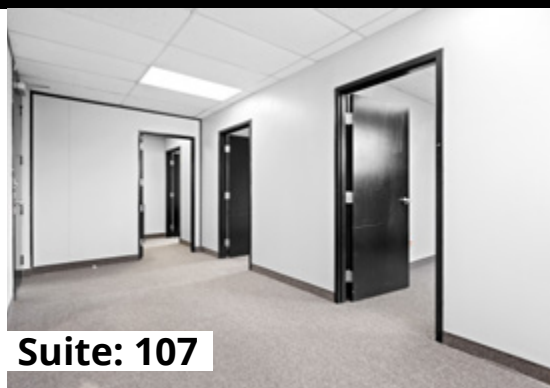
Gallery

Office Space For Lease

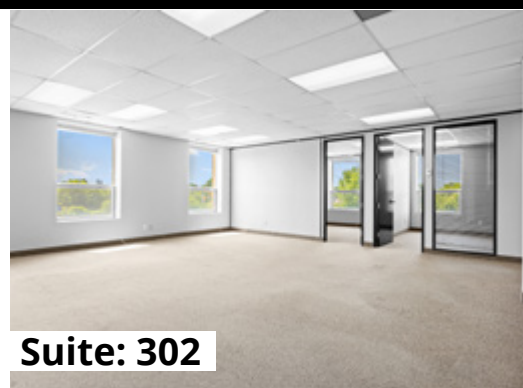
1827 Woodward Drive
Ottawa, ON



Suite: 107



Suite: 107



Suite: 302



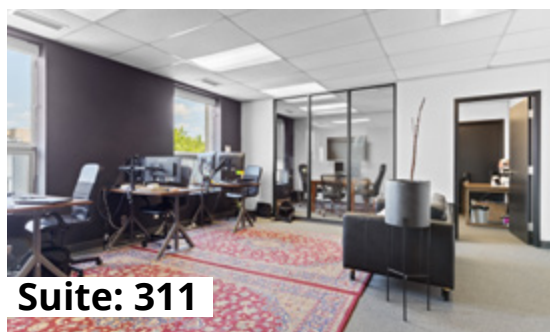
Suite: 302



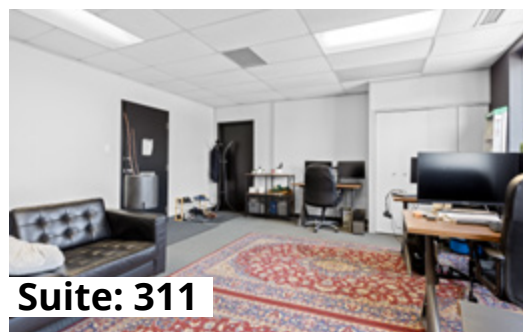
Suite: 302



Suite: 302



Suite: 311



Suite: 311



Suite: 312



Suite: 312

David A. MacLeod

Sales Representative, Vice-President
D +1 613 696 2764
david.macleod@avisonyoung.com

Giorgio DiNardo

Sales Representative, Vice-President
D +1 613 696 2763
giorgio.dinardo@avisonyoung.com

Map

Office Space For Lease

1827 Woodward Drive
Ottawa, ON



Location: Near the corner of Woodward Drive and Maitland Avenue

David A. MacLeod
Sales Representative, Vice-President
D +1 613 696 2764
david.macleod@avisonyoung.com

Giorgio DiNardo
Sales Representative, Vice-President
D +1 613 696 2763
giorgio.dinardo@avisonyoung.com