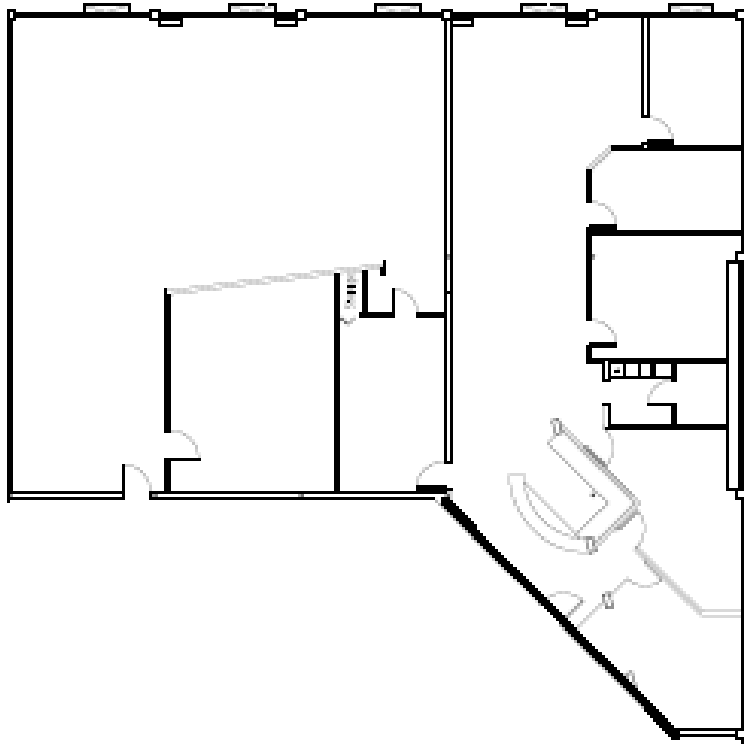
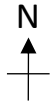


# 2323 Quebec Street, Vancouver, BC



## Suite 201 5,028 square feet

Description: Light industrial manufacturing use. Northeast corner unit currently improved for specialty jewelry design & manufacturing and ancillary office use. Improvements includes, two perimeter offices, four interior offices, reception/waiting area, lunchroom, meeting room and a large open area.

This is a representation for marketing purposes only and should not be used for measurements of any kind. This drawing is not to scale.

**TPMG CAPITAL**

Real Estate Acquisition  
Management  
Leasing