

FOR LEASE

2305 ST. LAURENT BLVD.

Ottawa, ON K1G 4J8



JOHN ZINATI

+1(613)880.4106

john@zinatirealty.com

LIZ POWELL

+1(613)915.5496

liz@zinatirealty.com

92 CENTREPOINTE DRIVE • OTTAWA, ON K2G 6B1 • 613.853.4106 • ZINATIREALTY.COM

 **ZINATI**
REALTY
COMMERCIAL BROKERAGE



OFFERING SUMMARY

Available SF:	2,326 SF
Lease Rate:	\$16.00 SF/yr (NNN)
Additional Rent:	approx. \$14.66 PSF

PROPERTY OVERVIEW

2305 St. Laurent is part of the popular Ottawa Business Park. Suite 200 offers approx. 2,326 sq ft of office space with a reception area, four (4) enclosed offices, a kitchenette, an open workspace and large windows that invite natural lighting throughout. This property is located close to local amenities and provides ample onsite parking. Many major roadways nearby including Walkley Road, Hawthorne Road, Hunt Club Road and minutes from HWY 417 East and West.

PROPERTY HIGHLIGHTS

- Onsite parking available (3:1,000 SF)
- Dedicated entrance
- Close proximity to HWY 417
- Signage opportunity
- Available immediately
- Utilities included

JOHN ZINATI

+1(613)880.4106

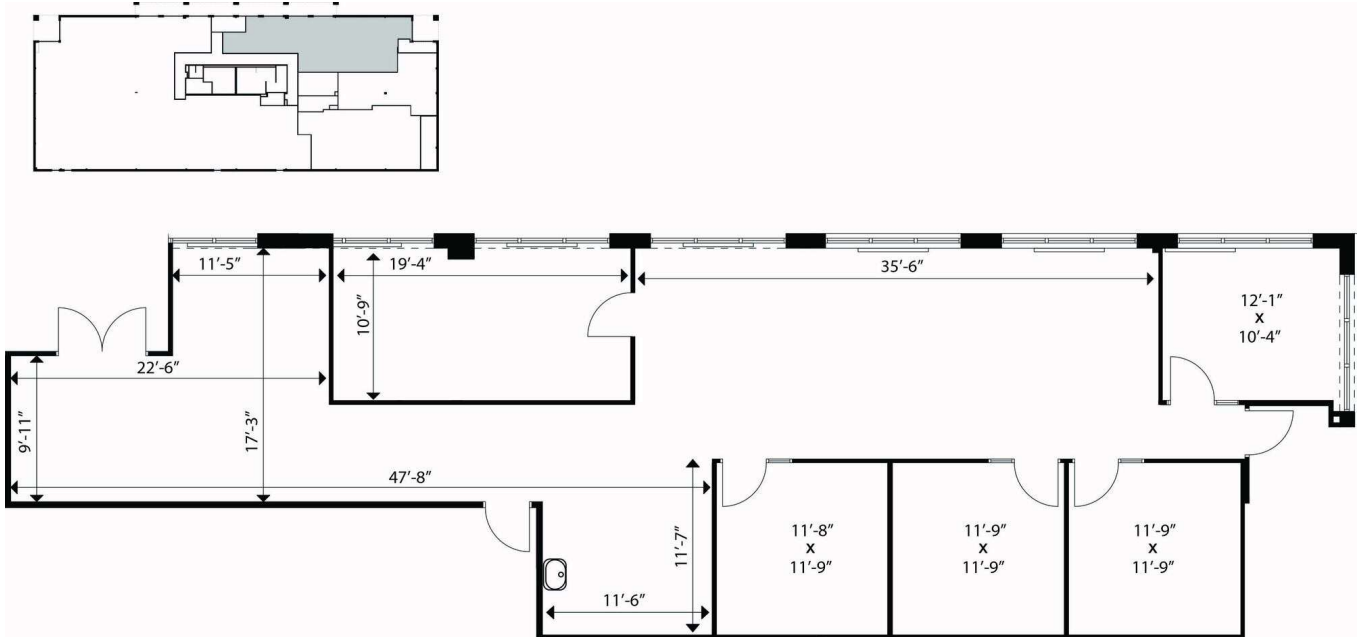
john@zinatirealty.com

LIZ POWELL

+1(613)915.5496

liz@zinatirealty.com

92 CENTREPOINTE DRIVE • OTTAWA, ON K2G 6B1 • 613.853.4106 • ZINATIREALTY.COM



JOHN ZINATI

+1(613)880.4106

john@zinatirealty.com

LIZ POWELL

+1(613)915.5496

liz@zinatirealty.com

92 CENTREPOINTE DRIVE • OTTAWA, ON K2G 6B1 • 613.853.4106 • ZINATIREALTY.COM

2305 ST. LAURENT BLVD.
OTTAWA, ON K1G 4J8

Additional Photos



JOHN ZINATI
+1(613)880.4106

john@zinatirealty.com

LIZ POWELL
+1(613)915.5496

liz@zinatirealty.com

92 CENTREPOINTE DRIVE • OTTAWA, ON K2G 6B1 • 613.853.4106 • ZINATIREALTY.COM

ZINATI
REALTY
COMMERCIAL BROKERAGE

2305 ST. LAURENT BLVD.
OTTAWA, ON K1G 4J8

Map



JOHN ZINATI

+1(613)880.4106

john@zinatirealty.com

LIZ POWELL

+1(613)915.5496

liz@zinatirealty.com

92 CENTREPOINTE DRIVE • OTTAWA, ON K2G 6B1 • 613.853.4106 • ZINATIREALTY.COM

ZINATI
REALTY
COMMERCIAL BROKERAGE