

2570 King George Blvd, Surrey

359 SF - 2,694 SF Office Units

FOR LEASE
momentum



Brendon Schmidt

ASSOCIATE

604.615.9349

brendon@momentuminc.com



Conrad DeJong

ASSOCIATE

604.671.5097

conrad@momentuminc.com



OPPORTUNITY

Flexible second-floor office space for lease at 2570 King George Boulevard — a high-exposure, recently renovated building in the heart of South Surrey. With flexible layouts and strong surrounding growth, this is an ideal setting for professionals and businesses of all sizes.

Available Units:

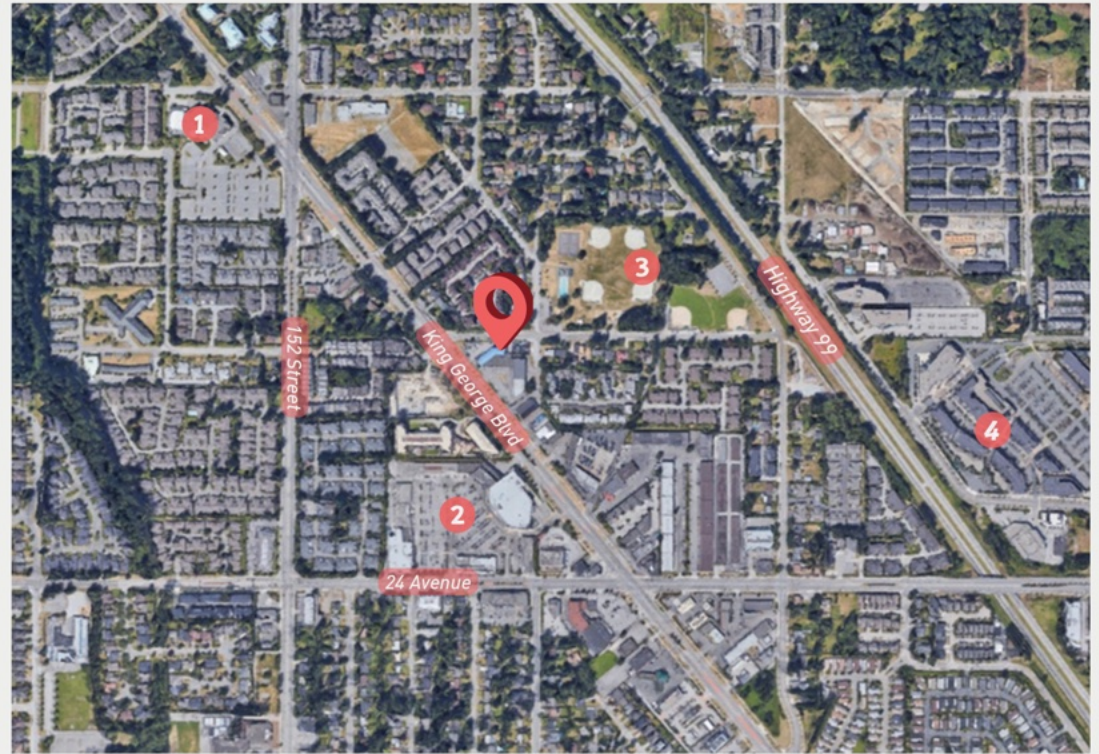
- Unit 102A | 1,250 SF – Renovated unit with 4 private offices, full kitchen, washroom, and private entrance
- Unit 102B | 359 SF – Private boardroom-style office, ideal for meetings or satellite use
- Unit 102C | 1,085 SF – Open-concept space with private office and storage

Highlights:

- High traffic exposure on King George Blvd
- On-site parking
- Minutes to Hwy 99, 152 Street, and 32nd Avenue
- Surrounded by retail and residential growth

A great opportunity to secure quality office space in a growing, high-traffic area.

LOCATION



1 Tribeca Plaza

2 Peninsula Village

3 Sunnyside Park

4 The Shops at Morgan Crossing

HIGHLIGHTS



Flexible Zoning



High Exposure Location
Along King George Blvd



Over 750,000 vehicles per month



Signage Options Available



Contact Agents for Lease Rates

SALIENT DETAILS

ADDRESS 2570 King George Blvd
Surrey, BC

UNIT # 102A / 102B / 102C

AREA 102A: 1,250 SF
102B: 359 SF
102C: 1,085 SF

2,694 SF

UNIT TYPE Office

ZONING CHI
Commercial Highway

LEASE RATE Contact Listing Agents

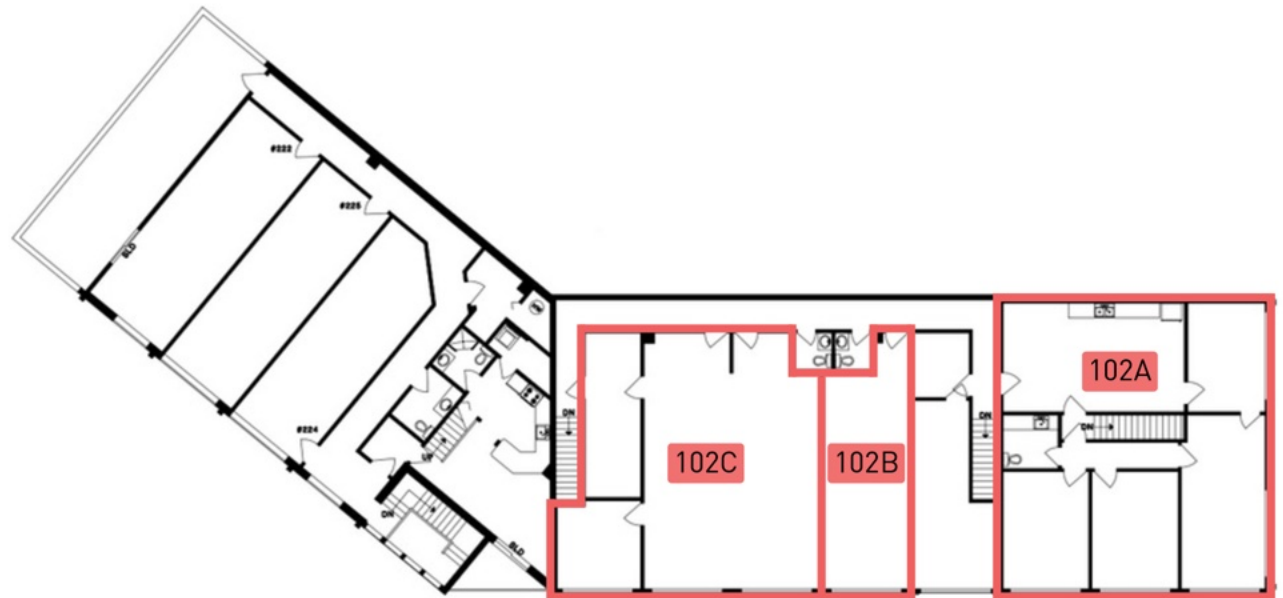
ADDITIONAL RENT \$6.75 PSF (2025 est.)

AVAILABILITY Immediately

PARKING Designated Spaces
Available at Market Rates

momentum

FLOOR PLAN



Unit 102C



Unit 102B



CONTACT US FOR MORE INFORMATION

Brendon Schmidt

ASSOCIATE

604.615.9349

brendon@momentuminc.com

Conrad DeJong

ASSOCIATE

604.671.5097

conrad@momentuminc.com

