

**AVISON
YOUNG**

FOR LEASE

Stantec Tower

10220 - 103 Avenue
Edmonton, AB

**Medical opportunity in
the heart of ICE District**

FUTURE RESIDENTIAL TOWER COMING TO ICE DISTRICT

Get more information

Ben Volorney

Principal

+1 780.909.5810

ben.volorney@avisonyoung.com

Emma Anderson

Associate, Brokerage Services

+1 587.416.3022

emma.anderson@avisonyoung.com

Property Overview

MEDICAL SPACE

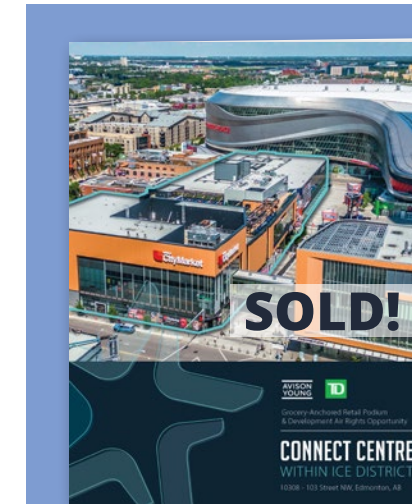
Stantec Tower represents a rare opportunity to position your medical business in the heart of ICE District, the hub of activity in downtown Edmonton.

This 4,862 SF space can be demised based on use and overall size requirement.

Maximize your business exposure with steady weekday traffic from office tenants and a regular stream from hotel guests and permanent residents. This location is at the doorstep of Rogers Place, and other major attractions. Immediately adjacent to Connect Centre with major retailers including Loblaws City Market, Canadian Icehouse and The Banquet.

Property Details

Lease Rate:	Market
Additional Rent:	\$20.36 psf (2026)
Available Area:	4,862 sf (demisable)
Parking:	Over 2,700 underground stalls in ICE District plus ample street parking
Available:	Immediately



Wiikwemkoong Indigenous Community Acquires 65\$M ICE District Space - New Housing to Come!

The community plans to add 35 storeys of residential space, totalling approximately 300 new units. This new development will inject an immediate population into the ICE District area.



Benefit from:



Entertainment

Rogers Place
Grand Villa Casino
Community Rink
Fan Park @ ICE District



Hotel & Residence

JW Marriott
Sky Signature Suites
The Legends Private Residence at ICE District



Office employees

Stantec Tower:
Stantec
Scotiabank
Dentons
Henry Singer
PWC
DLA
Canada ICI
Bennett Jones

Edmonton Tower:
City of Edmonton
RBC DS
Felesky Flynn
Kids & Company
Royal Bank of Canada
Sorrell Financial
Avison Young

Area Demographics:



2024 Population estimate within:

5 min. walk	3,620
10 min. walk	9,489
15 min. walk	39,082
20 min. walk	104,843



Daytime Employees within:

5 min. walk	16,214
10 min. walk	63,035
Over 1,500 Stantec employees	

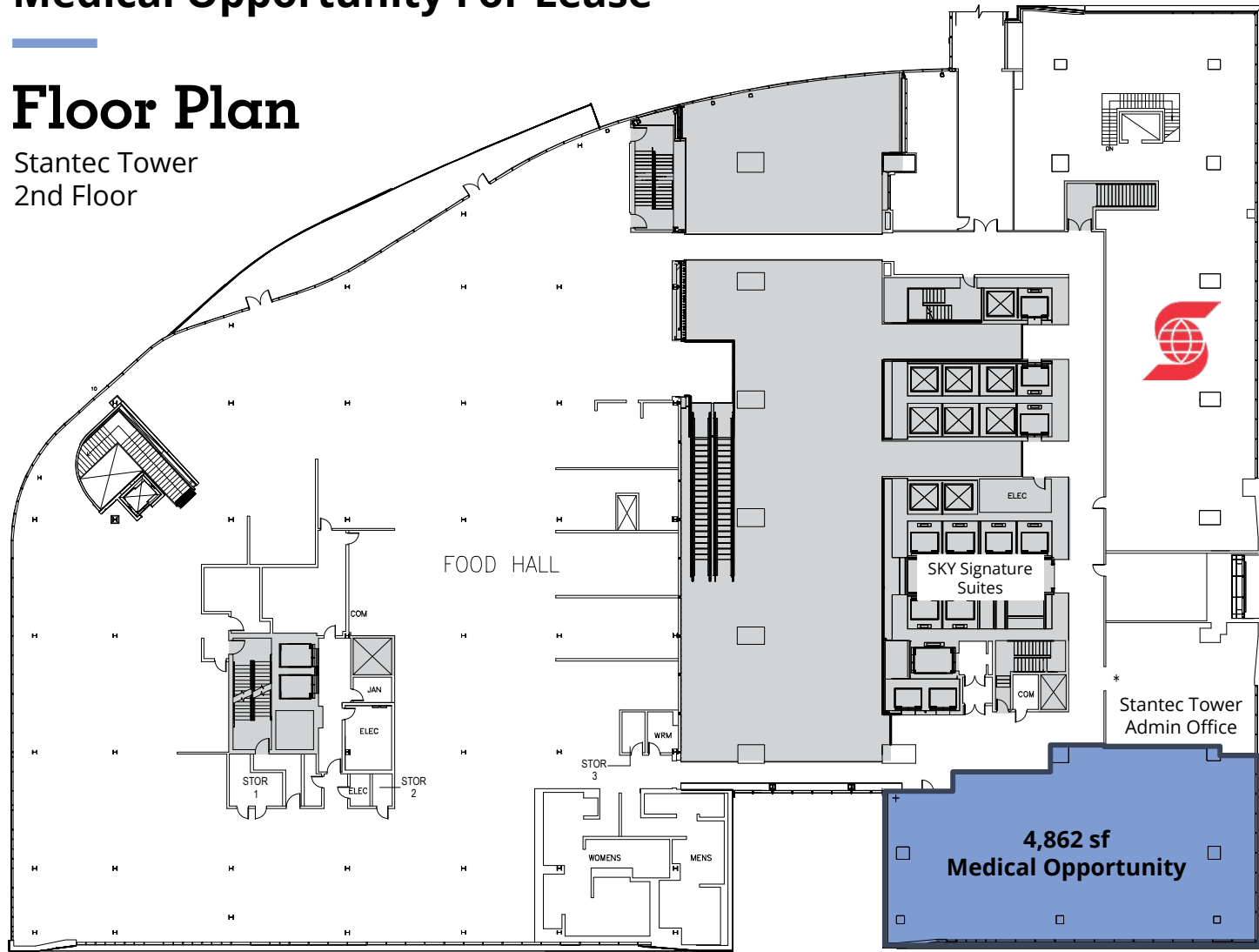
**Sitewise*

Medical Opportunity For Lease

Stantec Tower Retail
10220 103 Avenue, Edmonton, AB

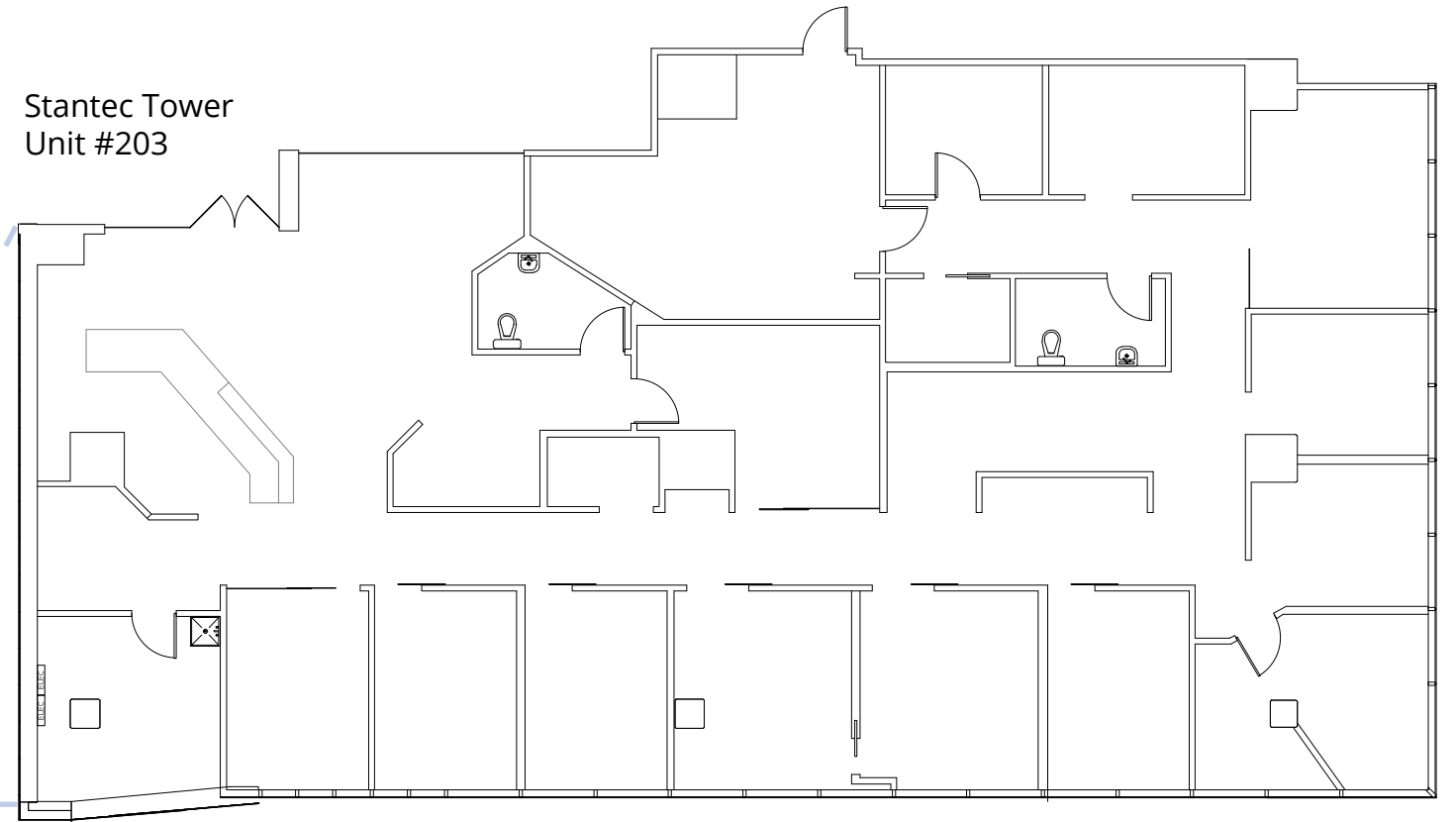
Floor Plan

Stantec Tower
2nd Floor



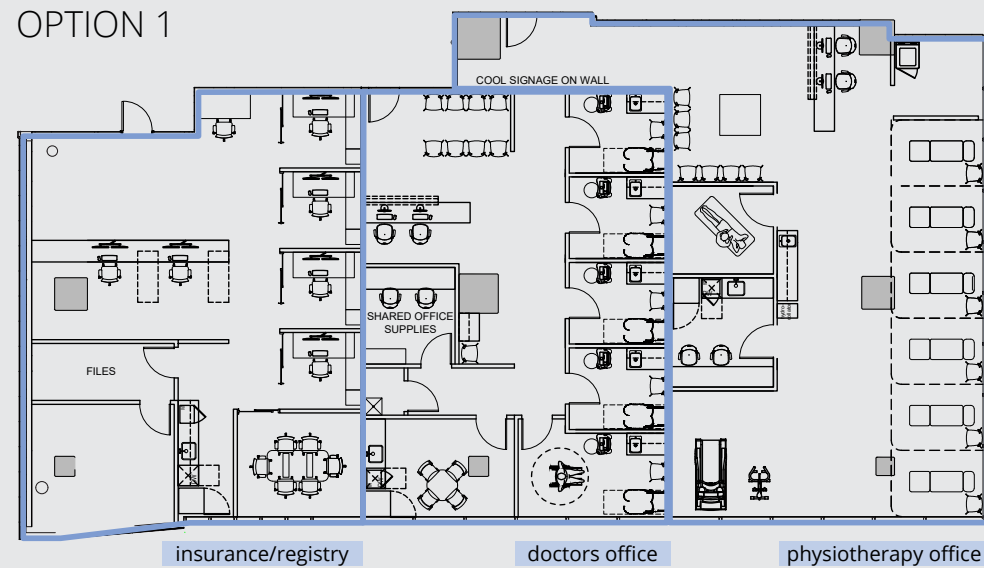
Unit 203 is a 4,862 sf fully-fixture dentist office with demising options to accommodate a range of medical and professional services. Potential demising plans of the space are provided below.

Stantec Tower
Unit #203

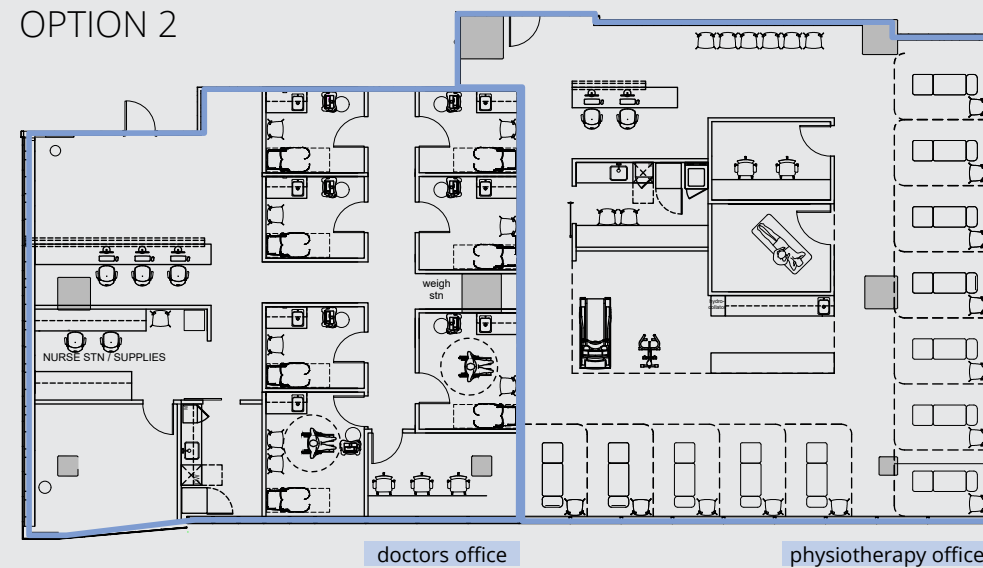


Potential Demising Plans

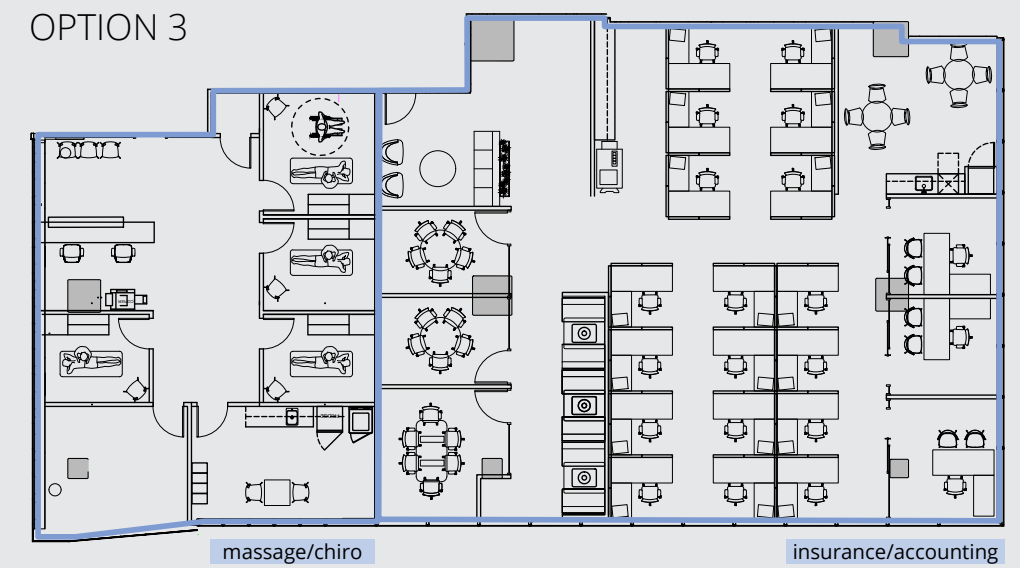
OPTION 1



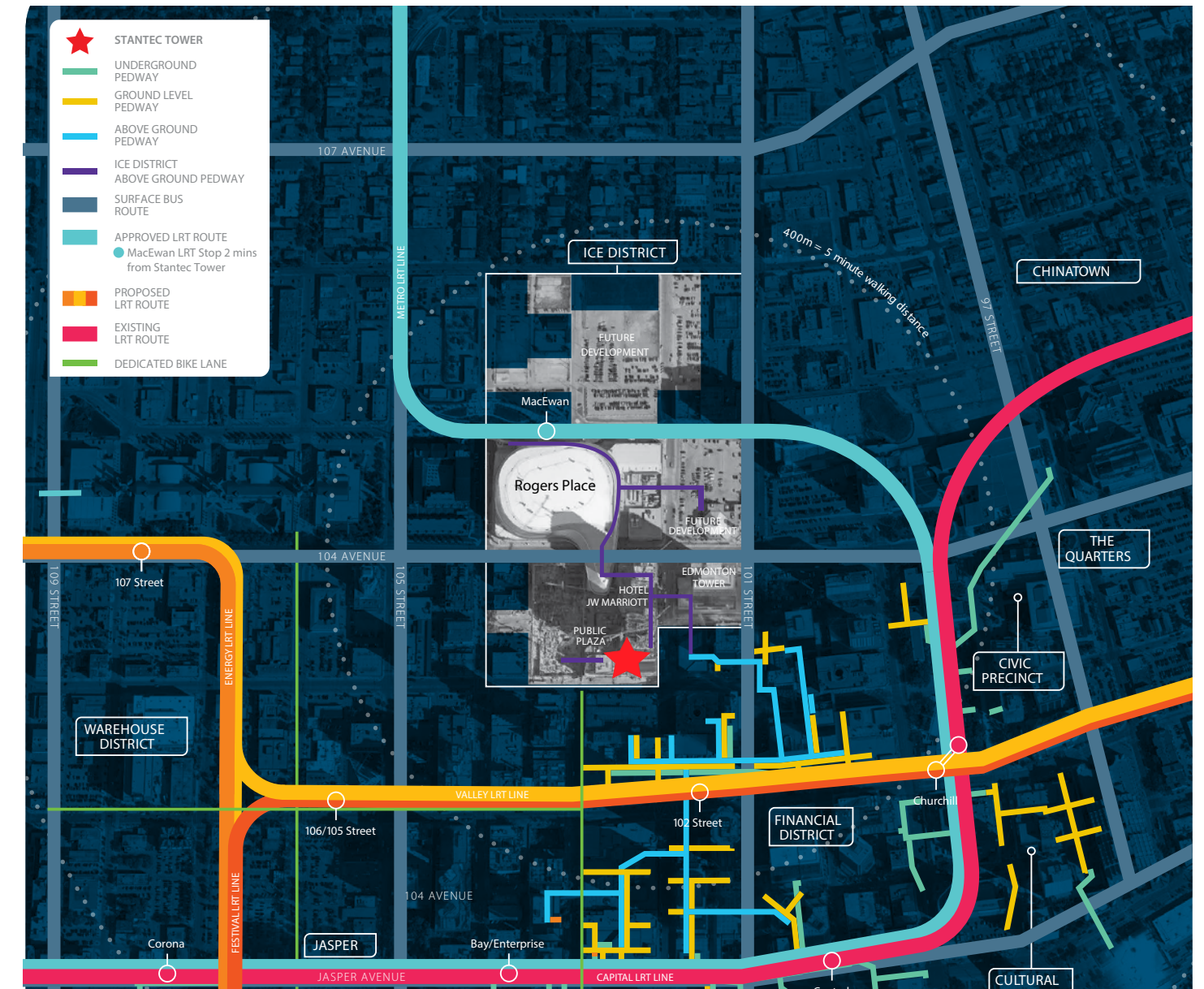
OPTION 2



OPTION 3



Location Overview



Street level access

When fresh air is needed, the adjacent Public Plaza is only steps away and within less than a five minute walk to anywhere in the financial district, situated north of Stantec Tower. Rogers Place and Ford Hall are accessible across the plaza just beyond the front entrance. A very attractive lobby welcomes tenants with main floor retail and a future second-floor licensed food hall.

Pedway connected

Stantec Tower is connected via aboveground pedway into Rogers Place through the JW Marriott, situated on the north side of Stantec Tower and on the west side of 102nd Street. Above ground connections can be made through Edmonton Tower and Bell Tower as well as west to Loblaws City Market, providing indoor access to the rest of downtown Edmonton's core system.

Public transit

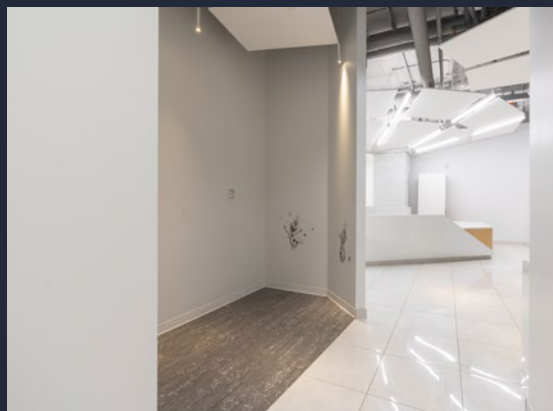
In addition to its location directly along major bus routes, Stantec Tower has indoor access to four LRT stations via pedway connection, both ground level and underground access.

**AVISON
YOUNG**

**For more information,
please contact:**

Ben Volorney
Principal
+1 780.909.5810
ben.volorney@avisonyoung.com

Emma Anderson
Associate, Brokerage Services
+1 587.416.3022
emma.anderson@avisonyoung.com



Visit us online
avisonyoung.com

 **Canderel**

© 2026 Avison Young Commercial Real Estate Services, LP All rights reserved.
E. & O.E.: The information contained herein was obtained from sources which we deem reliable and, while thought to be correct, is not guaranteed by Avison Young.
Suite 2100, 10111 - 104 Avenue | Edmonton, AB T5J 0J4 | 780 428 7850

Deka