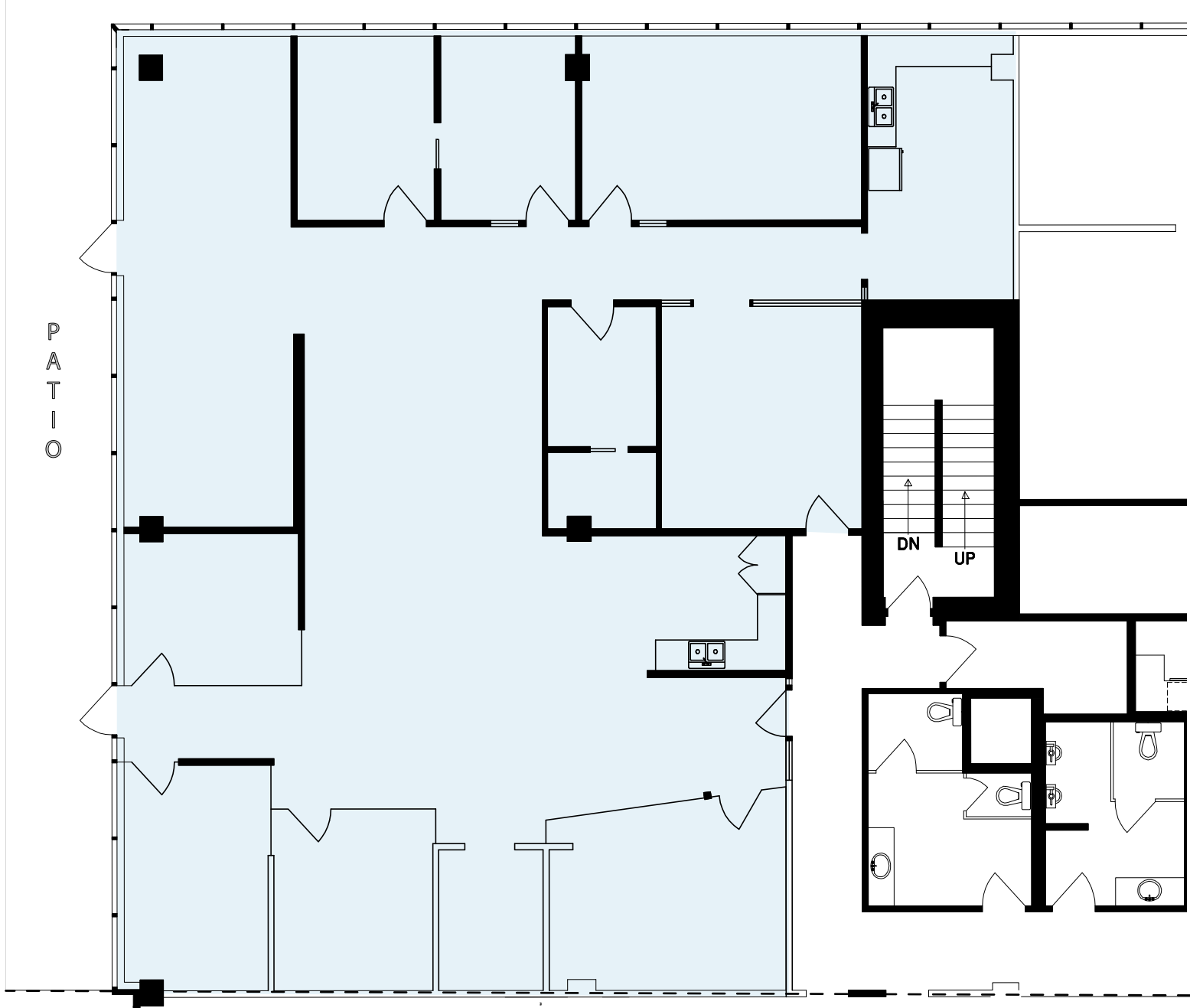


#300 - 1688 152nd St., Surrey

BASIC RENT: CONTACT LISTING AGENT

Rentable Area: 3,890sf | Available Immediately

Well lit unit with space for boardroom. Includes 2 kitchenettes. Access to large wrap-around patio.



JEFF TOEWS

604 723 4990

jtoews@warringtonpci.com

300 - 1030 West Georgia St., Vancouver, BC V6E 2Y3

E. & O.E. The information contained herein was obtained from sources which we deem reliable, and while thought to be correct, is not guaranteed by Warrington PCI Management.



1' 5' 10'
SCALE

wpm

**WARRINGTON PCI
MANAGEMENT**