

Only one Floor Remaining



FOR SUBLEASE

Top 3 Floors of
PARK PLACE
at 666 Burrard Street



Building

Park Place at 666 Burrard St. has long been regarded as one of the premiere office properties in downtown Vancouver. Owned by BCI and managed by QuadReal, the building offers 590,000 sf of office space over 35 floors. Building amenities include a common area fitness facility, bike storage and meeting room as well as high quality food and coffee offerings from Caffé Artigiano.

Location

Park Place is centrally located in the downtown core at the corner of Burrard and Dunsmuir. The Burrard St. skytrain station, Royal Centre and Bentall Centre are located directly across the street from the building. Pacific Centre Mall is located two blocks from Park Place offering access to a host of excellent retail shops and restaurants.

Features

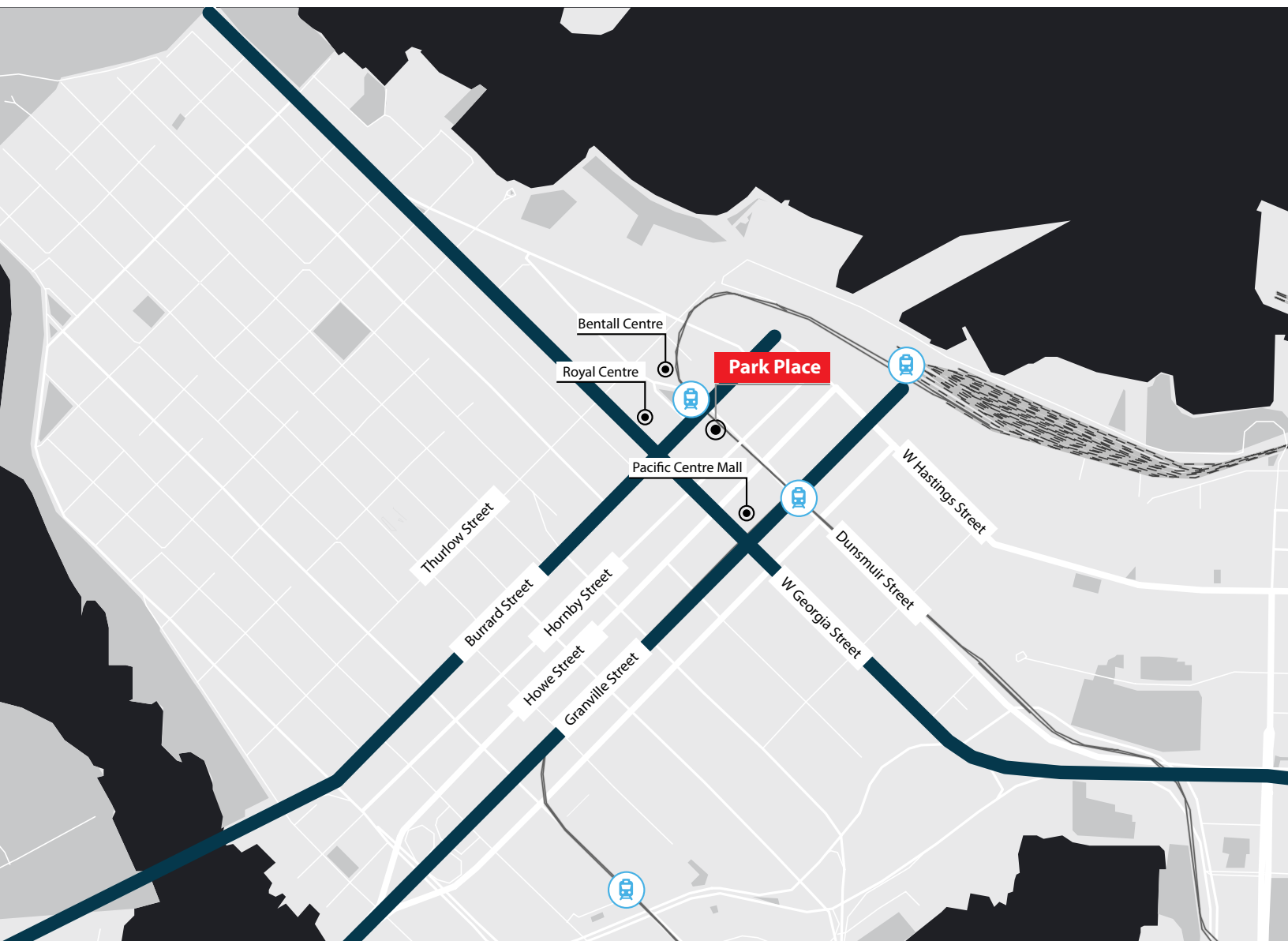
Nicely built out with a mix of offices and open area.



95

82

100

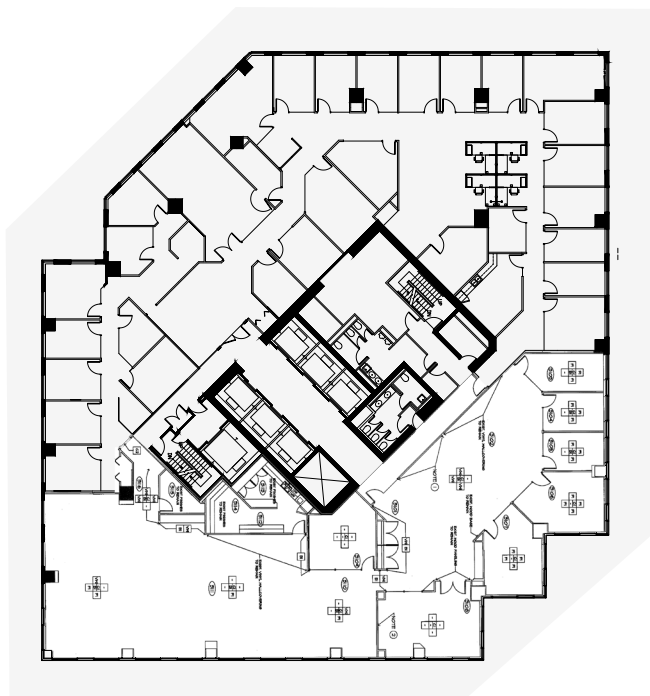


Details of Availability

- Total of approx. 16,369 rentable square feet
- Full 31st Floor
- Term to Oct 30/26. Longer term negotiable on a head lease basis
- Available immediately
- Additional rent is estimated at \$26.43 psfpa in 2021 including nightly in suite janitorial service and utilities
- Please contact listing agent for details on basic rent.

31st floor

BURRARD STREET

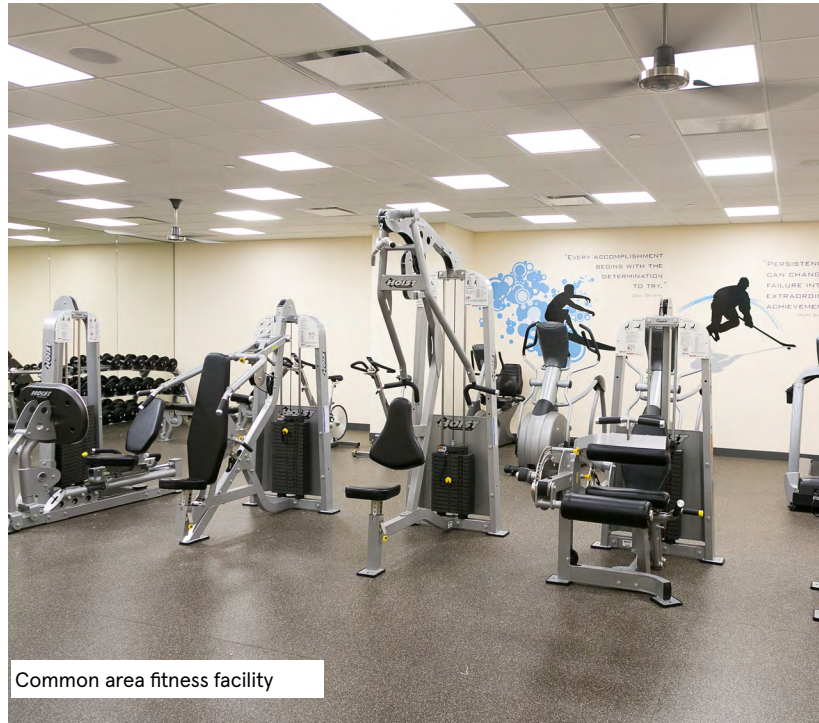
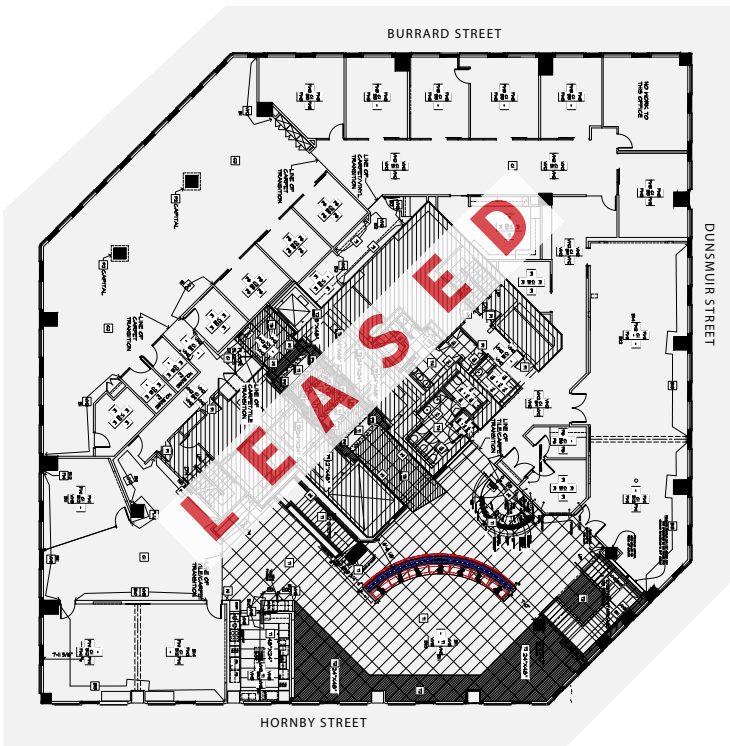


HORNBY STREET

32nd floor



34th floor



33rd floor



35th floor





Mark Trepp*
Executive Vice President

+1 604 998 6035
Mark.Trepp@am.jll.com

* Personal Real Estate Corporation