

# For Lease

## Western Business Park

3105 Unity Drive  
Mississauga, ON



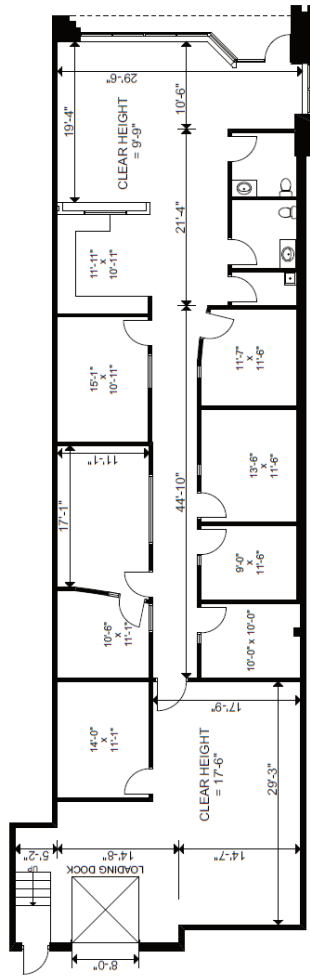
## Unit 22

**Total Square Feet**  
3,462 SF

**Availability:** Sept. 15, 2026

**Key features:**

- 2,437 SF of office built out
- 17'6" clear height
- 1 loading dock door
- Kitchenette
- Net Rent : \$18.50 PSF
- 2026 TMI: \$7.11 PSF



**Dimpal Bulsara**  
Leasing Manager  
Sales Representative  
QuadReal Property Group, Brokerage

**T** 905 798 7426  
**E** Dimpal.Bulsara@quadreal.com  
**W** www.quadreal.com

