

470

FOR LEASE

Weber St N, Waterloo – Unit 205

**IMMEDIATE
OCCUPANCY!**

Free On-Site Parking



Faithlife Financial Building 1,684 SQFT Available

Highlights

Location	Near King Street North
Rentable Area	1,684
Parking	Ample on-site parking no additional cost
Signage	Pylon sign provided
Additional Rent	\$15.10/sq ft (est.2026)
Lease Rate	\$14.00/ sq ft

Features

- Very professional signature building in North Waterloo
- Easy access to the Conestoga Expressway Hwy 85 via King St
- Building with impressive atrium lobby
- Main floor unit with windows on 2 elevations and interior windows overlooking lobby
- Close to all amenities including restaurants, financial institutions, shopping etc.
- Landlord's office is on-site
- Additional rent including all utilities & suite cleaning

PETER KRUSCHEN
SALES REPRESENTATIVE
PETER@COUPALMARKOU.COM
519-742-7000 x 106

Coupal Markou Commercial Real Estate Inc
150 King Street South
Waterloo, Ontario N2J 1P6
Office 519-742-7000
Fax 519-742-7070



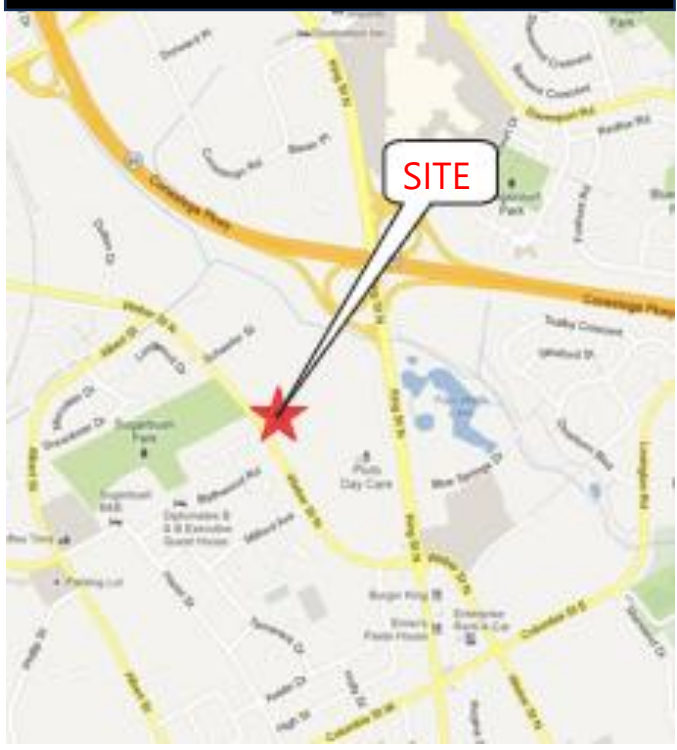
www.coupalmarkou.com

470

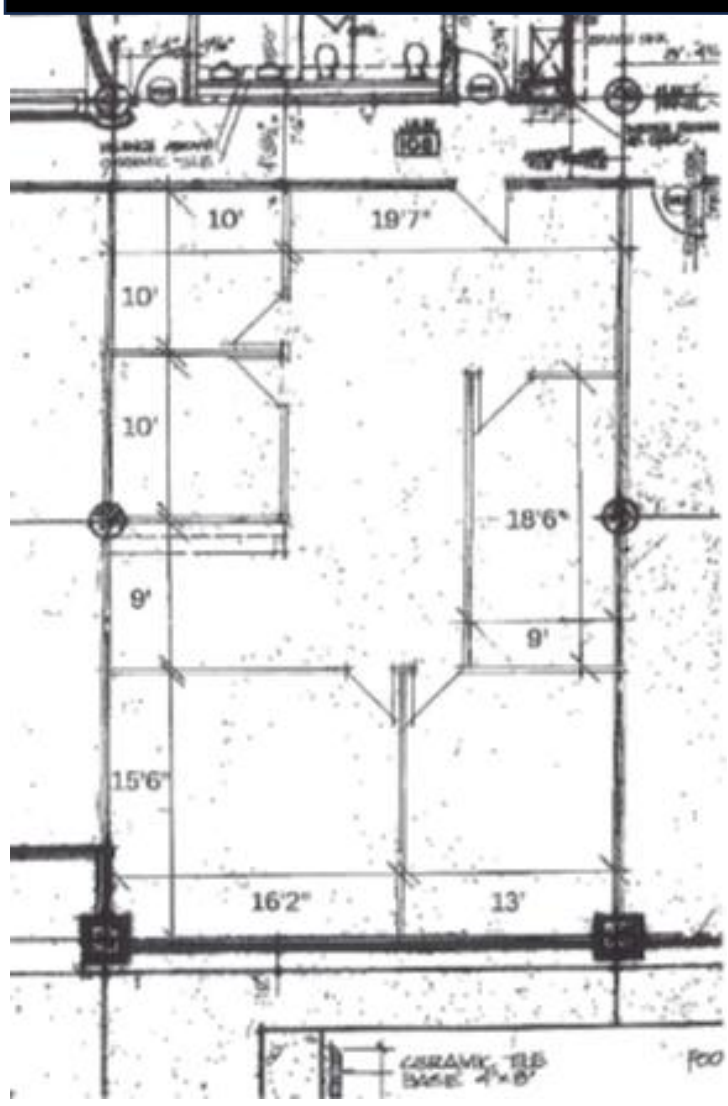
FOR LEASE

Weber St N, Waterloo – Unit 205

Map Location



Floor Plan



Aerial View



PETER KRUSCHEN
SALES REPRESENTATIVE
PETER@COUPALMARKOU.COM
519-742-7000 x 106

Coupal Markou Commercial Real Estate Inc
150 King Street South
Waterloo, Ontario N2J 1P6
Office 519-742-7000
Fax 519-742-7070



www.coupalmarkou.com

This disclaimer shall apply to Coupal Markou Commercial Real Estate Inc., Brokerage, to include all employees and independent contractors. The information set out herein is for advertising purposes, and any images, assumptions, estimates and property details have been obtained from sources deemed to be reliable. No warranty or representation is made as to its accuracy, correctness and completeness of the information, being subject to errors, omissions, conditions, prior sale / lease, withdrawal or other changes without notice. The recipient of the information should conduct its own inquiries and investigations prior to placing any reliance upon the information. MLS