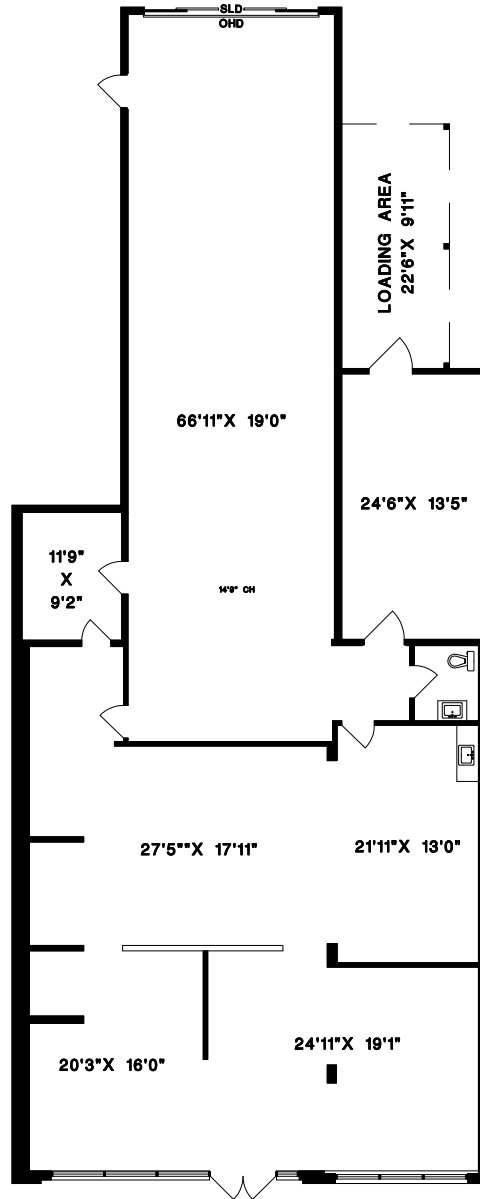


2412 KING GEORGE BLVD.,
SURREY, B.C.



AREA CERTIFICATION: SEPTEMBER 19, 2025

As evidenced by our signature and in accordance with the ANSI/BOMA Z65.2-2019 Industrial Buildings: Standard Methods of Measurement, we hereby certify the Construction Gross Area of this BUILDING to be 4,084 Square Feet.


CRAIG W. NICHOLS
MEASURE MASTERS



1" = 6'
SCALE

DRAWN BY: CN
DATE: SEPTEMBER 2025
REVISED:

 MEASURE MASTERSTM
SURREY/WHITE ROCK
(604) 539-0285
surrey@measuremasters.ca

2412 KING GEORGE BLVD.,
SURREY, B.C.

COVERED
LOADING
223 SQ.FT.

WAREHOUSE
OCA
3,861 SQ.FT.

AREA CERTIFICATION: SEPTEMBER 19, 2025

As evidenced by our signature and in accordance with the
ANSI/BOMA Z65.2-2019 Industrial Buildings: Standard Methods of Measurement,
we hereby certify the Construction Gross Area of this BUILDING to be 4,084 Square Feet.



CRAIG W. NICHOLS
MEASURE MASTERS

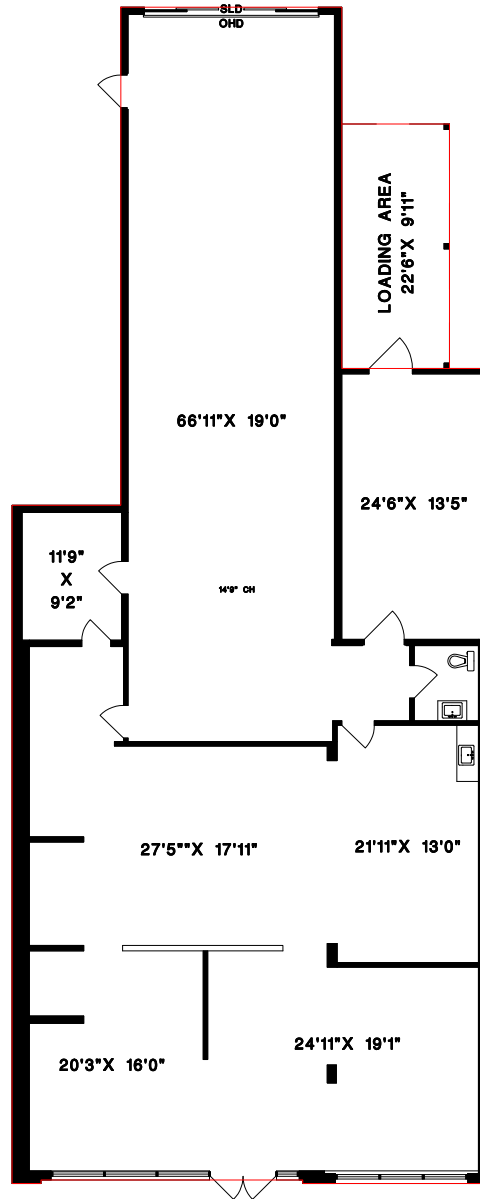


1" = 6'
SCALE

DRAWN BY: CN
DATE: SEPTEMBER 2025
REVISED:

MEASURE MASTERS
SURREY/WHITE ROCK
(604) 539-0285
surrey@measuremasters.ca

2412 KING GEORGE BLVD.,
SURREY, B.C.



AREA CERTIFICATION: SEPTEMBER 19, 2025

As evidenced by our signature and in accordance with the ANSI/BOMA Z65.2-2019 Industrial Buildings: Standard Methods of Measurement, we hereby certify the Construction Gross Area of this BUILDING to be 4,084 Square Feet.


CRAIG W. NICHOLS
MEASURE MASTERS



1" = 6'
SCALE

DRAWN BY: CN
DATE: SEPTEMBER 2025
REVISED:

 **MEASURE MASTERS™**
SURREY/WHITE ROCK
(604) 539-0285
surrey@measuremasters.ca