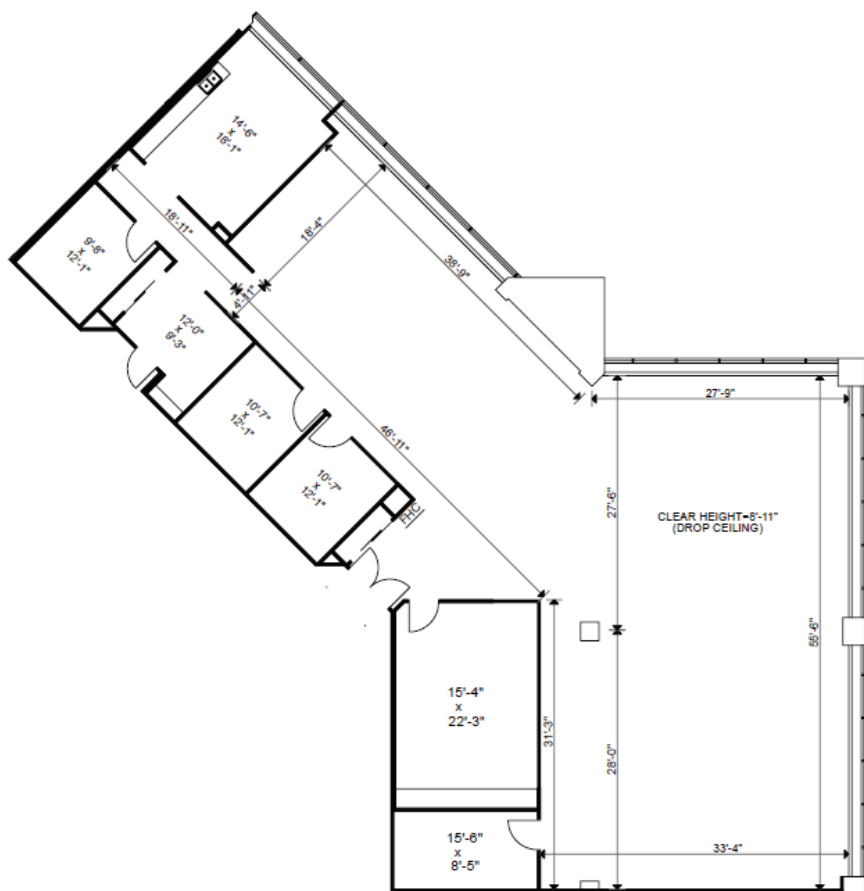


Updated: 2026

# Suite Features

## 145 King West



**Suite**  
1002

**Rentable Area**  
5,181 SF

**Availability:** Immediate

**Operating costs:**  
\$22.20 per SF

**Realty taxes:**  
\$10.50 per SF

**Total additional rent:**  
\$33.65 per SF

**Key features:**

- Built out with 4 offices, boardroom, kitchen, reception and open area
- Polished concrete floors

**Jessica Wickersham**  
Vice President, Office Leasing  
Sales Representative  
QuadReal Property Group, Brokerage

**T** 905-798-7435  
**E** [jessica.wickersham@quadreal.com](mailto:jessica.wickersham@quadreal.com)  
**W** [www.quadreal.com](http://www.quadreal.com)

**Perk DeMara**  
Vice President, Leasing  
Broker of Record  
QuadReal Property Group, Brokerage

**T** 416-673-7386  
**E** [perk.demara@quadreal.com](mailto:perk.demara@quadreal.com)  
**W** [www.quadreal.com](http://www.quadreal.com)



Updated: 2026

# Suite Gallery

145 King West

—  
Suite  
1002



Furniture not included