



688 LOUGHEED HWY

Coquitlam, BC

SHORT-TERM LOT + LAND LEASE



DAN CLARK
Personal Real Estate Corporation
604.628.2577
dan@sitings.ca

SITINGS REALTY LTD.
SITINGS.CA / 604.684.6767
1595 – 650 West Georgia Street, Vancouver, BC V6B 4N8

PROJECT SUMMARY

With direct access to major highways and transit-friendly surroundings, 688 Lougheed offers unbeatable convenience for businesses needing flexible space. This property is perfect for short-term storage, automotive use, or overflow vehicle parking. Ample space designed to accommodate a large inventory of cars and other storage, makes it perfect for dealerships, collectors, or anyone in need of extra short-term space.



This document/email has been prepared by Sitings Realty Ltd. for advertising and general information only. Although information contained herein is from sources we believe reliable, Sitings Realty Ltd. makes no guarantees, representations or warranties of any kind, expressed or implied, regarding the information including, but not limited to, warranties of content, accuracy and reliability. This document/email is subject to errors and omissions and any interested party should undertake their own inquiries as to the accuracy of the information. Sitings Realty Ltd. excludes unequivocally all inferred or implied terms, conditions and warranties arising out of this document and excludes all liability for loss and damages arising there from. All areas, measurements and dimension herein are approximate, interested parties/tenant are to verify measurements if important to them. This document/email is not an inducement representation.

DETAILS

✦ 1.84 acre lot + 19,000 SF building

✦ Gross lease rate + utilities: Contact Listing Agent

✦ Parking for 150+ cars

✦ Available: Immediately (Great for short term rental up to 1 year)

AREA ATTRIBUTES



Easily accessible off Lougheed Hwy & well connected to other major thoroughfares



Ample onsite parking



Central Lower Mainland location



High exposure

DEMOGRAPHICS

| | 3 MIN | 5 MIN | 10MIN |
|------------------------------|-----------|-----------|-----------|
| 2025 Population | 15,410 | 53,793 | 215,514 |
| 2030 Populations Projections | 17,010 | 58,768 | 230,131 |
| 2025 Average HH Income | \$115,895 | \$117,536 | \$138,471 |
| 2025 Daytime Population | 12,757 | 52,469 | 211,465 |

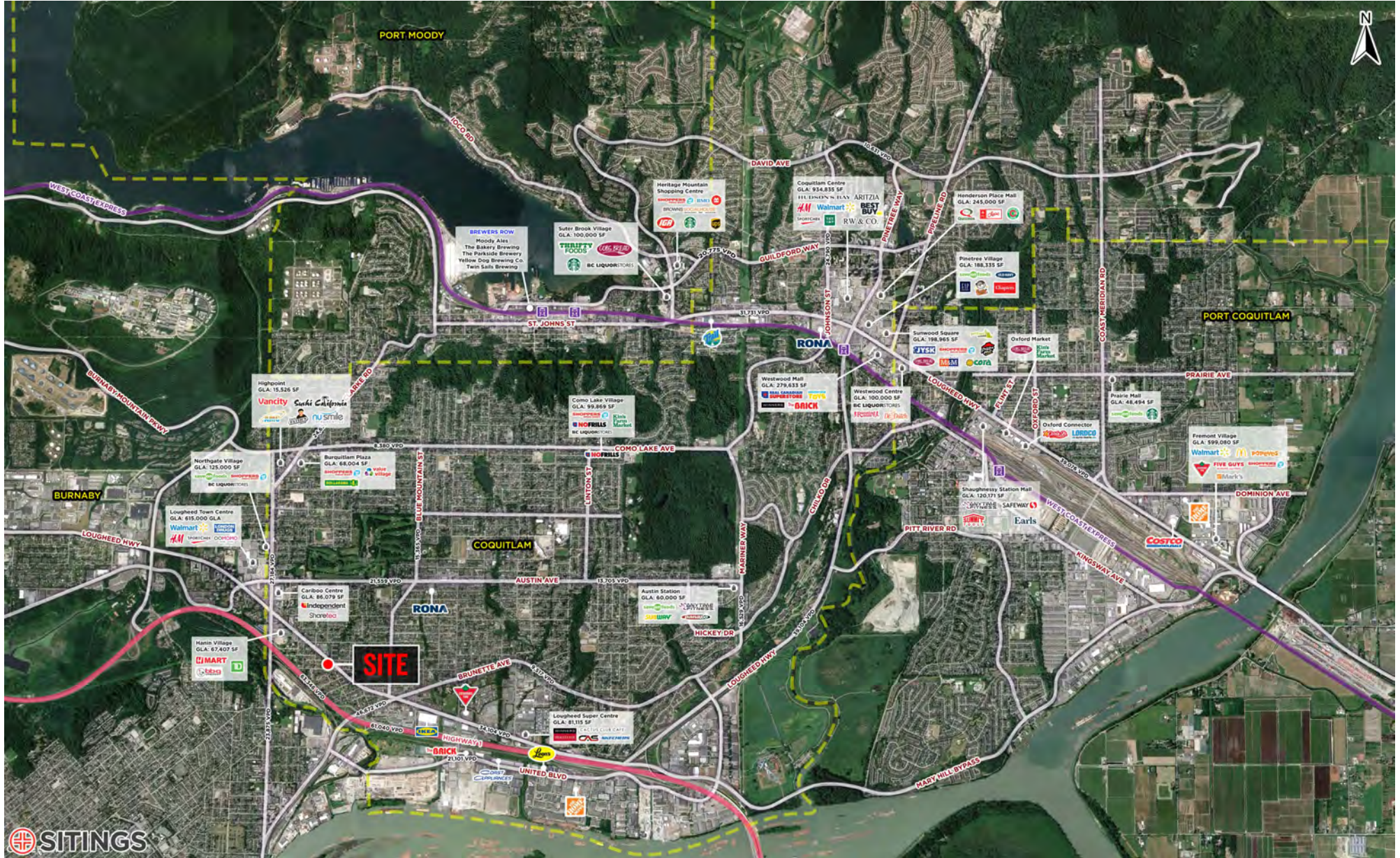
CONTACT

DAN CLARK

Personal Real Estate Corporation
Sitings Realty Ltd

604.628.2577
dan@sitings.ca

AERIAL



This document/email has been prepared by Sitings Realty Ltd. for advertising and general information only. Although information contained herein is from sources we believe reliable, Sitings Realty Ltd. makes no guarantees, representations or warranties of any kind, expressed or implied, regarding the information including, but not limited to, warranties of content, accuracy and reliability. This document/email is subject to errors and omissions and any interested party should undertake their own inquiries as to the accuracy of the information. Sitings Realty Ltd. excludes unequivocally all inferred or implied terms, conditions and warranties arising out of this document and excludes all liability for loss and damages arising there from. All areas, measurements and dimension herein are approximate, interested parties/tenant are to verify measurements if important to them. This document/email is not an inducement representation.



PHOTOS

