

Brand New AAA Office For Lease

Space: 683SF **\$32**

Basic Rent: ~~\$35~~ Add Rent: \$13.41

220 3388 NO 3 ROAD Richmond, BC



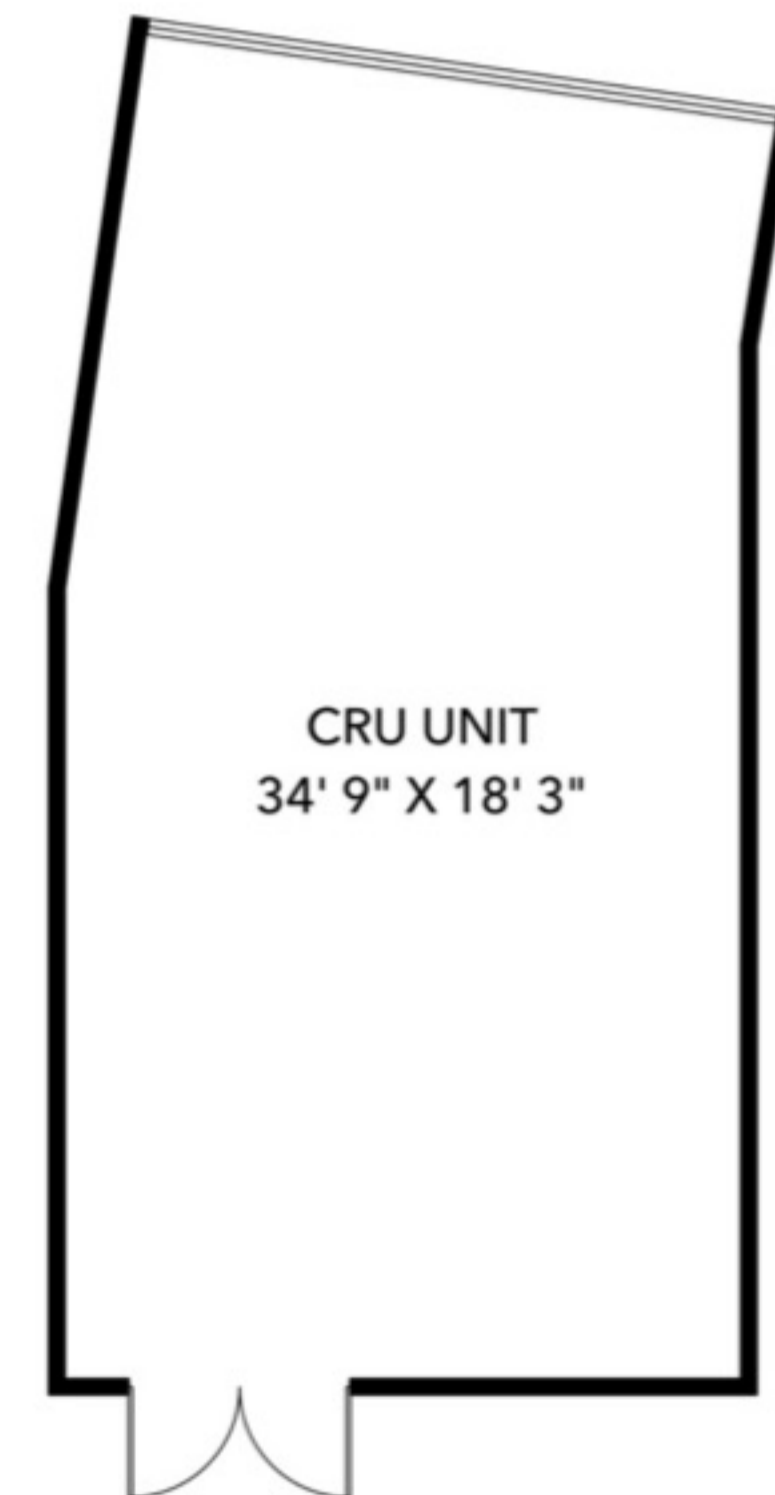
Strategically located next to the New Capstan Canada Line station and a 2-acre community park along No. 3 Road, Galleria Centre offers an exceptional opportunity to own upscale strata office spaces at the epicenter between Richmond City Centre and Vancouver. Common area: • 13'6" high ceiling art gallery themed retail and office lobby with interactive directory • 2-acre neighbourhood park with lush greenery and seating • Staff lounge equipped with pantry and TV • Executive boardroom equipped with state-of-the-art 4K video conference facilities, on-line booking app and smart privacy glass • Common washroom facilities dedicated for office level • Wi-Fi access at ground level lobby and across select shared facilities. One secured parking included!

#220 3388 No. 3 Road, Richmond, BC
Leasable Area 683 SQ.FT.

RE/MAX

RE/MAX
COMMERCIAL

RE/MAX Heights Realty



TOMMY CAO PREC*

Realtor & Property Manager

778.636.5932 (cell)

604.801.5577 (office)

info@tommycao.ca

<https://tommy-cao.remaxheightsrealty.com>