



**FIXTURED RETAIL UNITS
AVAILABLE IMMEDIATELY**

FOR LEASE HOLLAND PLAZA

Sizes Ranging From 2,755 - 12,005 SF Available

10939 - 120 Street NW
Edmonton, Alberta

Karina Lopez
Senior Associate
780-994-3820
karina.lopez@cwedm.com

Devan Ramage
Associate
780-420-1177
devan.ramage@cwedm.com

CUSHMAN & WAKEFIELD
Edmonton
Suite 2700, TD Tower
10088 - 102 Avenue
Edmonton, AB T5J 2Z1
www.cwedm.com

PROPERTY HIGHLIGHTS

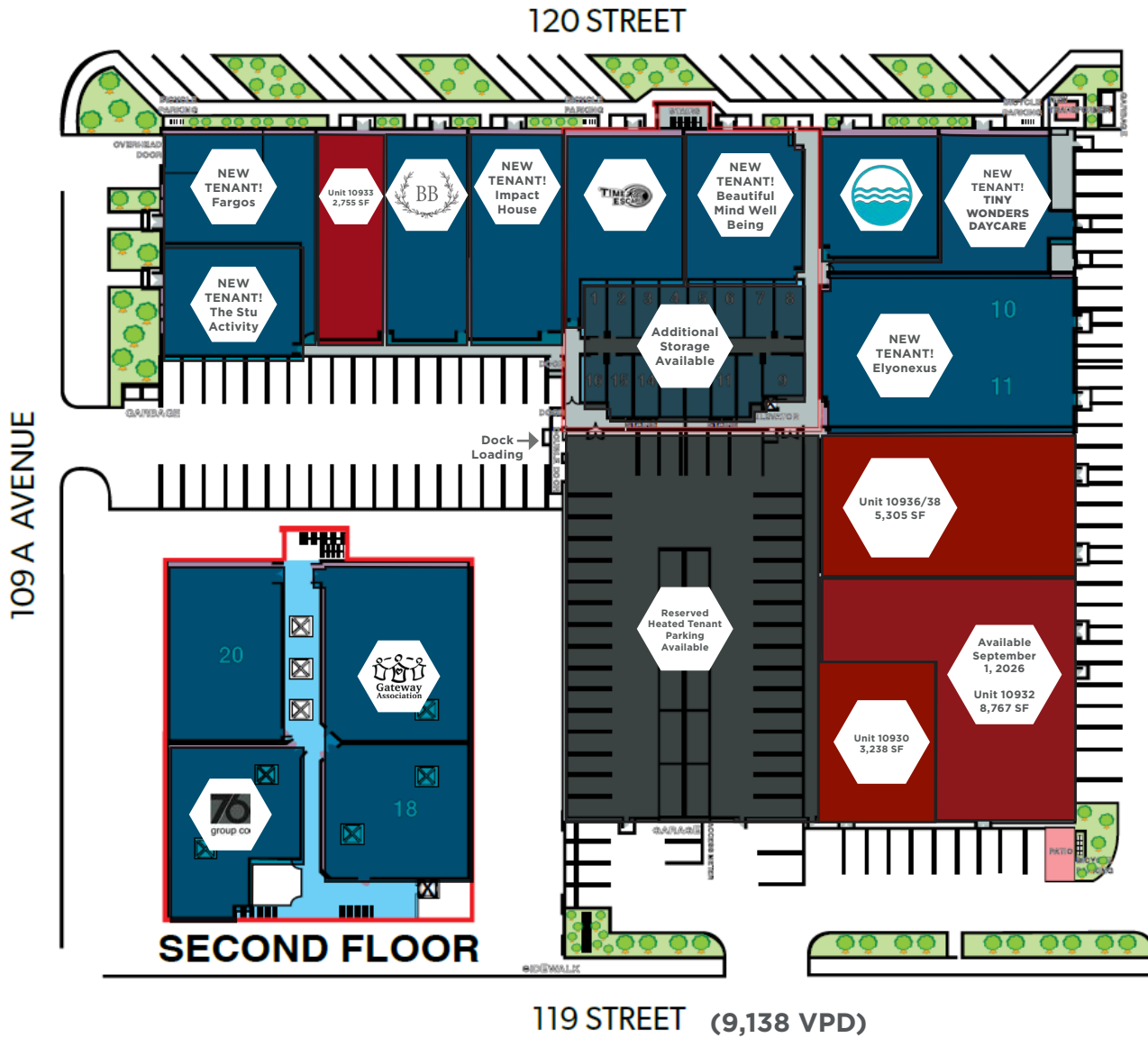
- Completely renovated and unique retail development strategically located in the heart of the Queen Mary Park Neighborhood.
- Come join a wide variety of unique operators including: The Bridal Boutique, Holland Liquor Store, Modern Gravity Float Studio, and Time Escape.
- Strategically located along 120th Street.
- Ample on site parking and multiple access points.
- High exposure pylon signage opportunity available.
- Heated and reserved tenant parking available.
- Over 12,259 residents within a 1km radius.
- (BE) Business Employment Zoning allows for a wide variety of uses.
- Lease Rate: Contact Listing Agent.
- Additional Rent: \$11.57 per SF (est. 2026).



PROPERTY DETAILS

Municipal Address:	10939 - 120 Street NW
Legal Description:	Lot B, C, Block 19, Plan 3256HW
Zoning:	(BE) Business Employment Zoning
Neighbourhood:	Queen Mary Park

SITE PLAN



DEMOGRAPHICS



POPULATION

1km	3km	5km
12,259	91,752	206,648



AVERAGE INCOME

1km	3km	5km
\$96,499	\$98,802	\$103,989



HOUSEHOLDS

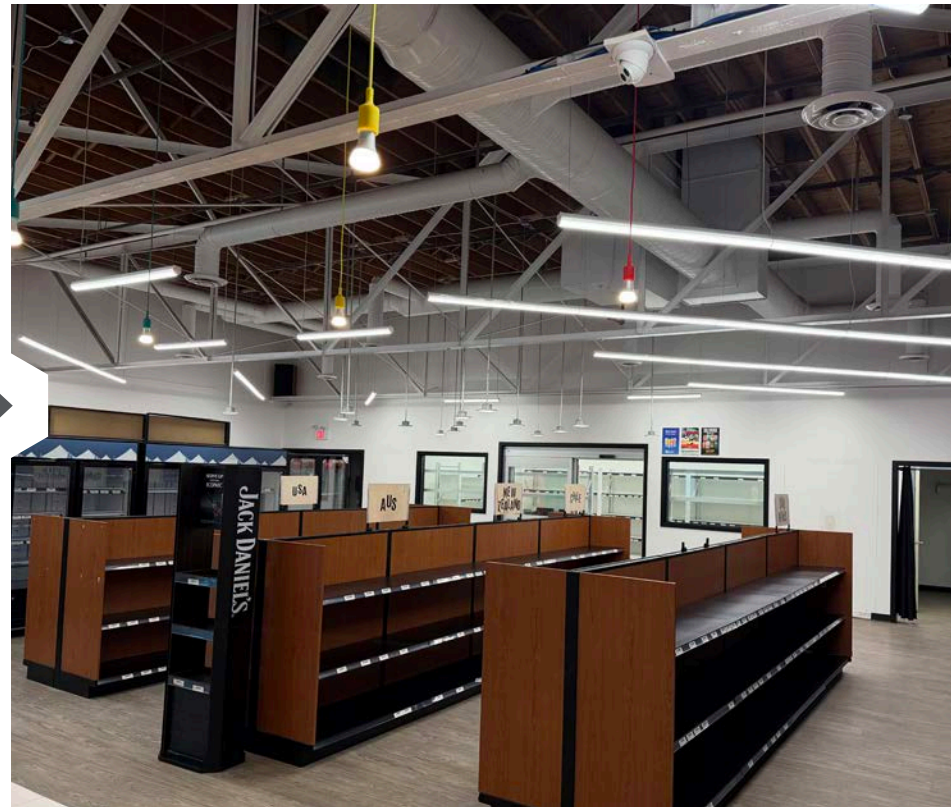
1km	3km	5km
6,325	47,262	98,475

PROPERTY PHOTOS

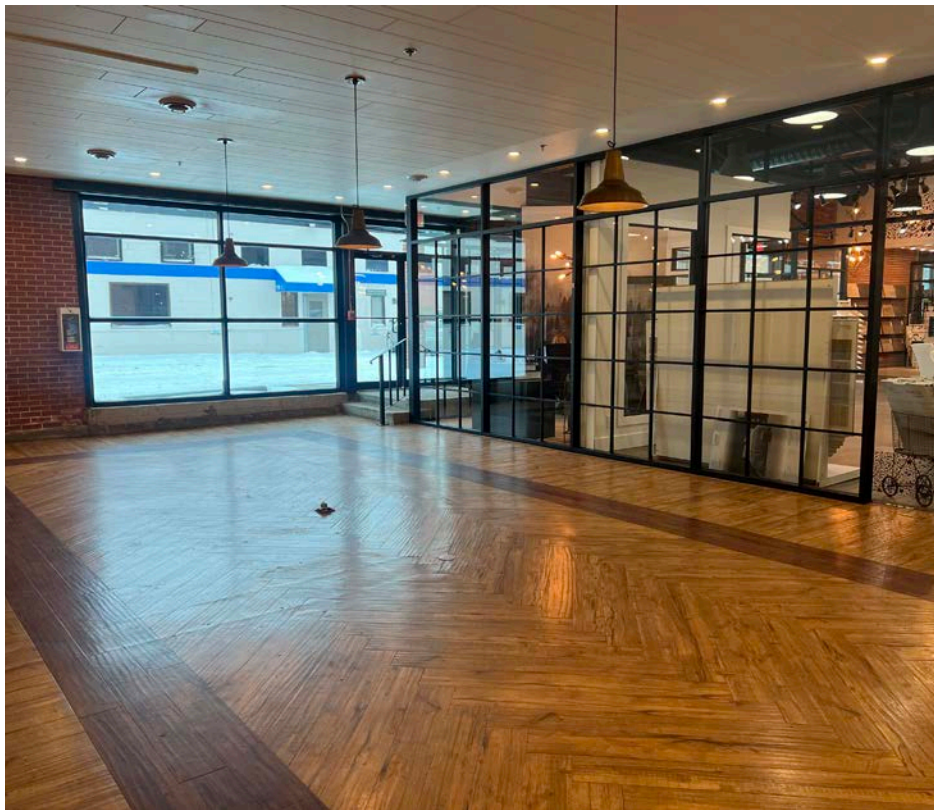
UNIT 10933: 2,755 SF



UNIT 10930: 3,238 SF



UNIT 10936 - 10938: 5,305 SF



PROPERTY PHOTOS

PROPERTY PHOTOS

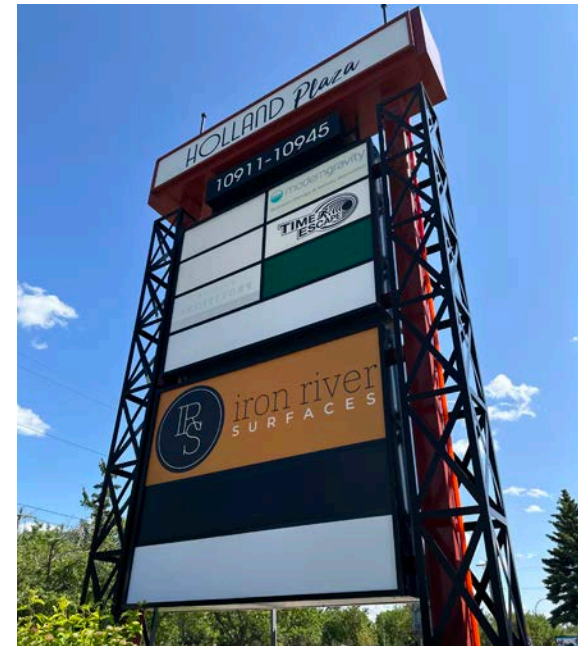
UNIT 11998: LEASED!



UNIT 11996: LEASED!



UNIT 10940: 6,711 SF LEASED!



CUSHMAN & WAKEFIELD
Edmonton

Karina Lopez
Senior Associate
780-994-3820
karina.lopez@cwedm.com

Devan Ramage
Associate
780-420-1177
devan.ramage@cwedm.com

Cushman & Wakefield Edmonton is independently owned and operated / A Member of the Cushman & Wakefield Alliance. No warranty or representation, express or implied, is made to the accuracy or completeness of the information contained herein, and same is submitted subject to errors, omissions, change of price/rental or other conditions, withdrawal without notice, and to any special listing conditions imposed by the property owner(s). As applicable, we make no representation as to the condition of the property (or properties) in question. March 2026