



Downtown Office Space

- Size: 1,850 sf
- Features: Offices (5), boardroom (1), reception area and kitchenette
- Parking: 1 Stall Available
- Elevator Access: Yes
- Heat: Hot Water
- Flooring: Finished Hardwood
- Sprinklered: Yes



Lease Rate
\$15.00 psf



Op Costs
\$10.50 psf



Zoning
Downtown Commercial



Possession
Immediate

For further information

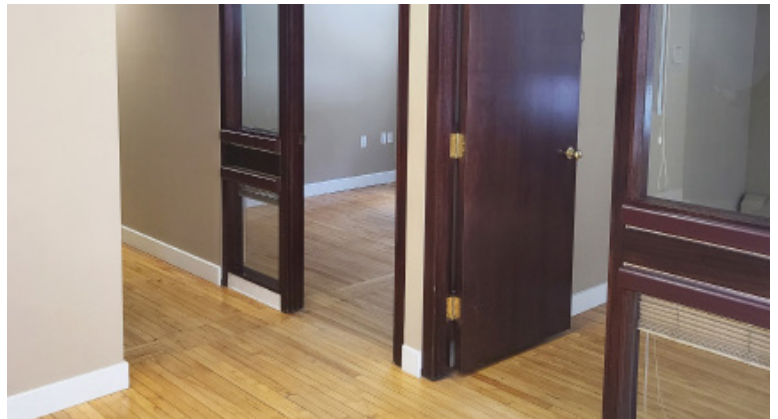
Linely Schaefer

Managing Director, Broker
306 559 9009
linely.schaefer@avisonyoung.com

avisonyoung.com

Office For Lease

200 2020 11th Avenue
Regina, SK S4P 2G2



Linely Schaefer

Managing Director, Broker

306 559 9009

linely.schaefer@avisonyoung.com

**AVISON
YOUNG**