

FOR LEASE/ SALE

Marine Landing

#387 - 8250 Manitoba Street
Vancouver



Billy Yang 楊比利

BSc. Electrical Eng., DIPBM

O: 604 493 3002 EXT 706

C: 778 899 0528

E: billyyang@rlpcommercial.com

Jin Park 박진휘

B.Comm. DULE

O: 604 493 3002 EXT 003

C: 778 960 7805

E: jinpark@rlpcommercial.com

CRE Investment & Development Team | Royal LePage Sussex

2397 Marine Drive | West Vancouver | BC Canada | V7V 1K9

P 604 493 3002 | info@rlpcommercialvancouver.com

*Personal Real Estate Corporation



OPPORTUNITY

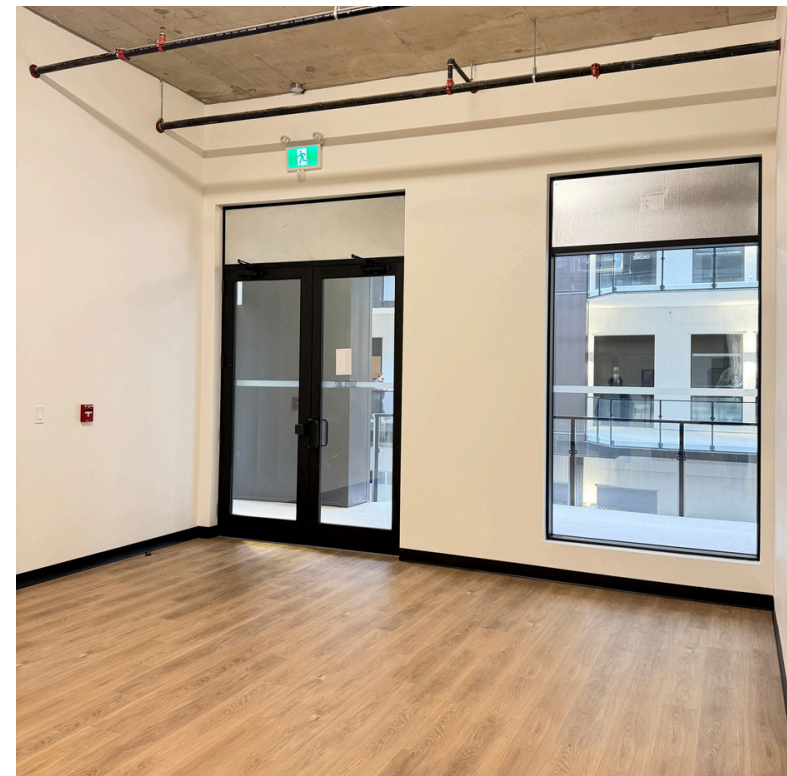
Secure a modern 618 sq ft strata unit on the third floor at Marine Landing, 8250 Manitoba Street, Vancouver, a premier mixed use business destination in South Vancouver. This Class A flex space features approximately 13 ft ceiling heights and preinstalled hardwood flooring, creating a bright, open, and polished workspace ideal for professional, creative, or light industrial users seeking an efficient and future ready environment.

Marine Landing offers contemporary design, flexible layouts, and a purpose built business environment that supports growth and collaboration. The development combines office functionality with light industrial capability, appealing to both owner occupiers and investors.

Strategically located with excellent access to Downtown Vancouver, Richmond, and YVR International Airport, this opportunity delivers connectivity, flexibility, and long term value in one of Vancouver’s emerging commercial hubs.

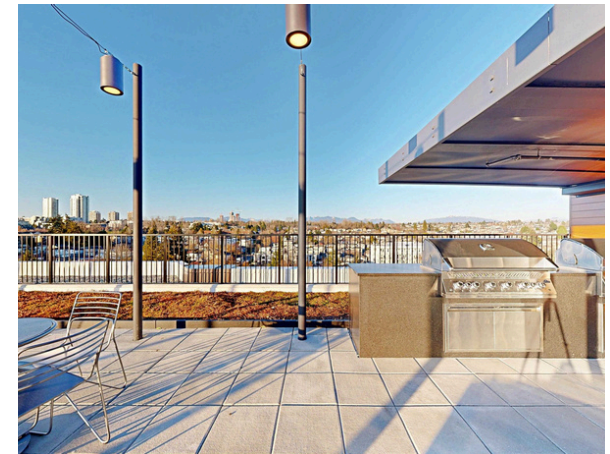
PROPERTY DETAILS

Address	#387 - 8250 Manitoba street, Vancouver
Strata Plan	EPS11021
PID	032-385-161
Zoning	I-2 Industrial
Unit Number	#387
Size	618 SF
Basic Rent	\$21.00
Additional Rent	\$10.00 (Based on 2025)
Lease Type	TRIPLE NET
Asking Sale Price	Contact the listing agent

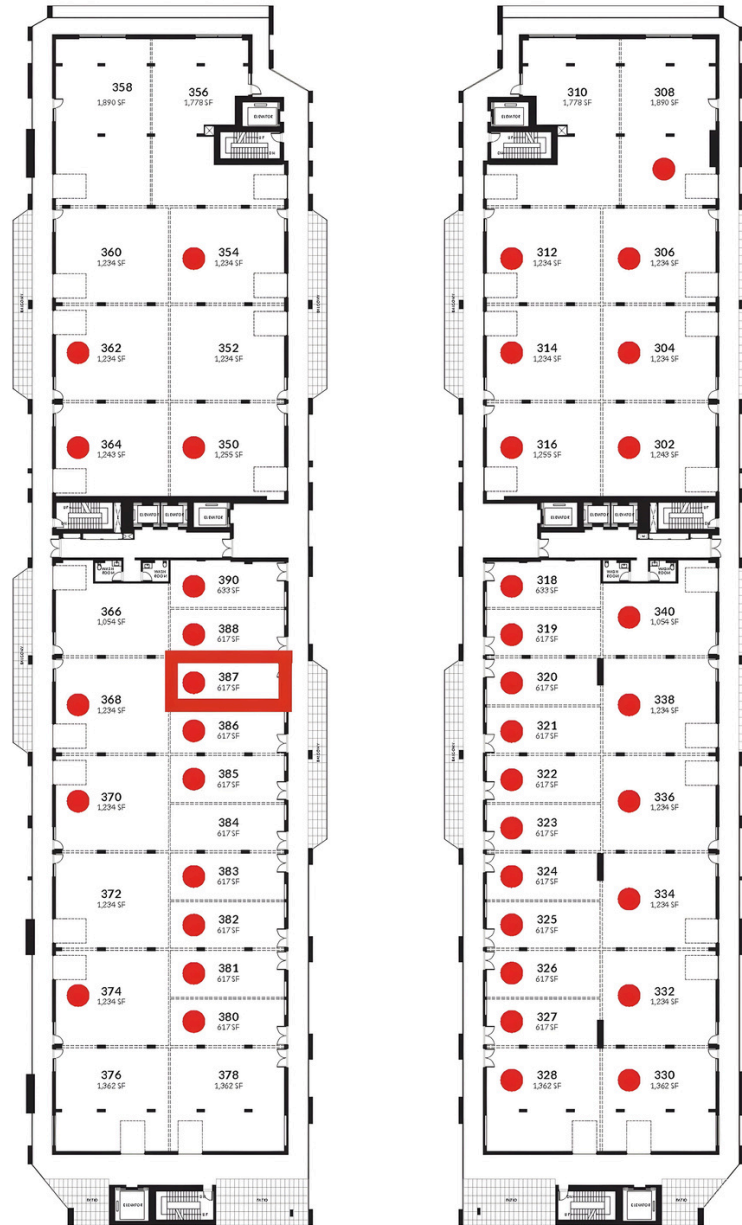


BUILDING AMENITIES

- Communal lounge with fully operational kitchen for hosting events and celebrations.
- End-of-trip bicycle facility with washdown station, repair workshop, and secure underground storage.
- Outdoor rooftop patio with BBQ area, large dog run, and attractive landscaping with outdoor seating.
- Full changerooms complete with private showers, custom lockers, and large changing area.
- Bookable boardroom with audio/visual presentation equipment and seating.
- State-of-the-art fitness centre and gym with full cardio equipment and weights.
- One Modo Car Share vehicle with a possibility of additional future Modo vehicles for ease of commuting.



FLOOR PLAN



BUILDING B

BUILDING A

DEMOGRAPHIC

12,688

Population



Average Household Size

CA\$105,856.62

2021 Household Average Income (Current Year \$)



Median Age



CA\$523M

2021 Household Aggregate Income



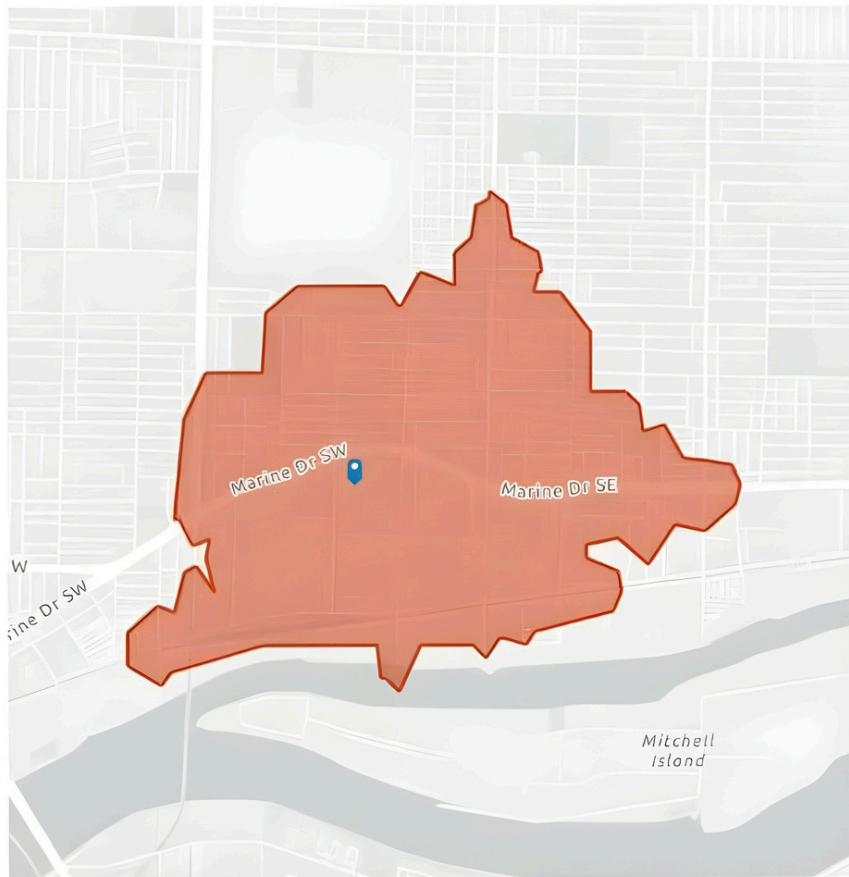
CA\$284M

2021 Household Discretionary Aggregate Income



CA\$416M

2021 Household Disposable Aggregate Income



ANNUAL HOUSEHOLD SPENDING



CA\$2.37M

2021 Alcoholic Beverages Served On Licensed Premises



CA\$22.7M

2021 Health Care



CA\$20.4M

2021 Clothing



CA\$37.8M

2021 Food Purchased From Stores



CA\$28.3M

2021 Food Purchased From Restaurants



CA\$204K

2021 Purchase of Pets, Related Pet Goods

Billy Yang 杨比利

BSc. Electrical Eng., DIPBM

O: 604 493 3002 EXT 706

C: 778 899 0528

E: billyyang@rlpcommercial.com

Jin Park 박진휘

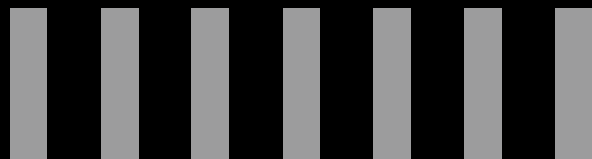
B.Comm, DULE

O: 604 493 3002 EXT 3

C: 778 960 7805

E: jinpark@rlpcommercial.com

Disclaimer: The information contained herein has been obtained from sources believed reliable. While we do not doubt its accuracy we have not verified it and make no guarantee, warranty or representation about it. It is your responsibility to independently confirm its accuracy and completeness. Any projections, opinions, assumptions, or estimates used are for example only and do not represent the current or future performance of the property. The value of this transaction depends on tax and other factors which should be evaluated by your tax, financial and legal advisors. You and your advisors should conduct a careful, independent investigation of the property to determine to your satisfaction the suitability of the property for your needs.



CRE Investment & Development Team | Royal LePage Sussex

2397 Marine Drive | West Vancouver | BC Canada | V7V 1K9

P 604 493 3002 | info@rlpcommercialvancouver.com

*Personal Real Estate Corporation

