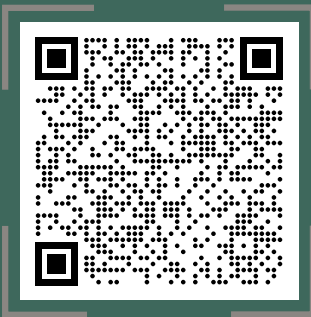
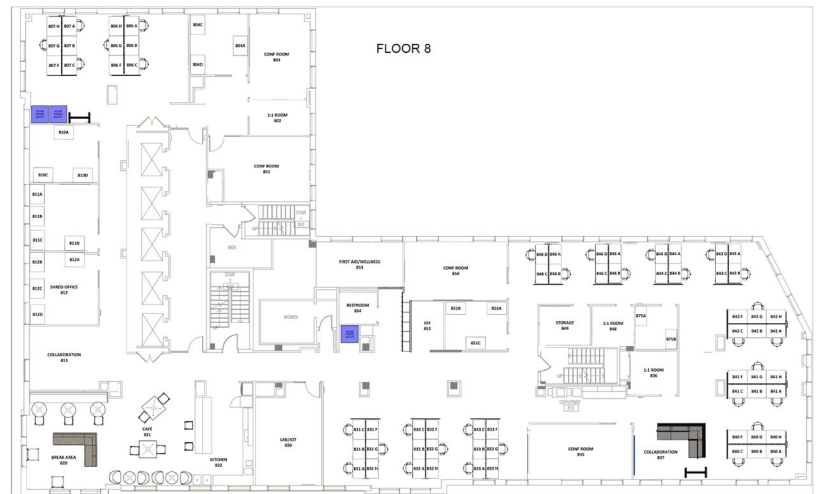


SCAN FOR BROCHURE



Unit	800
Area	10,637 SF (approx.)
Availability	Immediately
Term Expiry	April 2031
Basic Rent	\$20.00 PSFPA
Additional Rent	\$28.21 PSFPA (2025 est.)



FOR MORE INFORMATION, PLEASE CONTACT:



Christopher O'Neill
Personal Real Estate Corporation
ASSOCIATE VICE PRESIDENT
 +1 604 764 0907
 christopher@floorspace.ca

THIS DOCUMENT HAS BEEN PREPARED BY FLOORSPACE COMMERCIAL INC. FOR ADVERTISING AND GENERAL INFORMATION ONLY. ALL INFORMATION CONTAINED HEREIN IS FROM SOURCES WE DEEM RELIABLE, AND WE HAVE NO REASON TO DOUBT ITS ACCURACY; HOWEVER, NO GUARANTEE OR RESPONSIBILITY IS ASSUMED THEREOF, AND IT SHALL NOT FORM ANY PART OF FUTURE CONTRACTS. PROPERTY INFORMATION IS SUBMITTED SUBJECT TO ERRORS AND OMISSIONS AND ALL INFORMATION SHOULD BE CAREFULLY VERIFIED. ANY INTERESTED PARTY SHOULD UNDERTAKE THEIR OWN INQUIRIES AS TO THE ACCURACY OF THE INFORMATION. ALL MEASUREMENTS QUOTED HEREIN ARE APPROXIMATE. THIS PUBLICATION IS THE COPYRIGHTED PROPERTY OF FLOORSPACE COMMERCIAL INC. AND/OR ITS LICENSOR(S). COPYRIGHT © 2025 FLOORSPACE COMMERCIAL INC.