



# For Lease

## 307 Mansfield Place

North Vancouver

1,380 sq.ft. Office / Warehouse

**BABYCH** GROUP  
COMMERCIAL



307 Mansfield Place  
North Vancouver

## Opportunity

This property is located just north of Main Street on Mansfield Place Close proximity to the Iron Workers Memorial Bridge and the Phibbs Exchange Bus Loop. Amenities nearby include Canadian Tire, MEC and Park and Tilford Shopping Centre along Brooksbank Avenue.

## Property Details

**Unit Size:**  
1,380 sq.ft.

**Zoning:**  
I3

**Basic Rent:**  
\$26.00 per sq.ft.

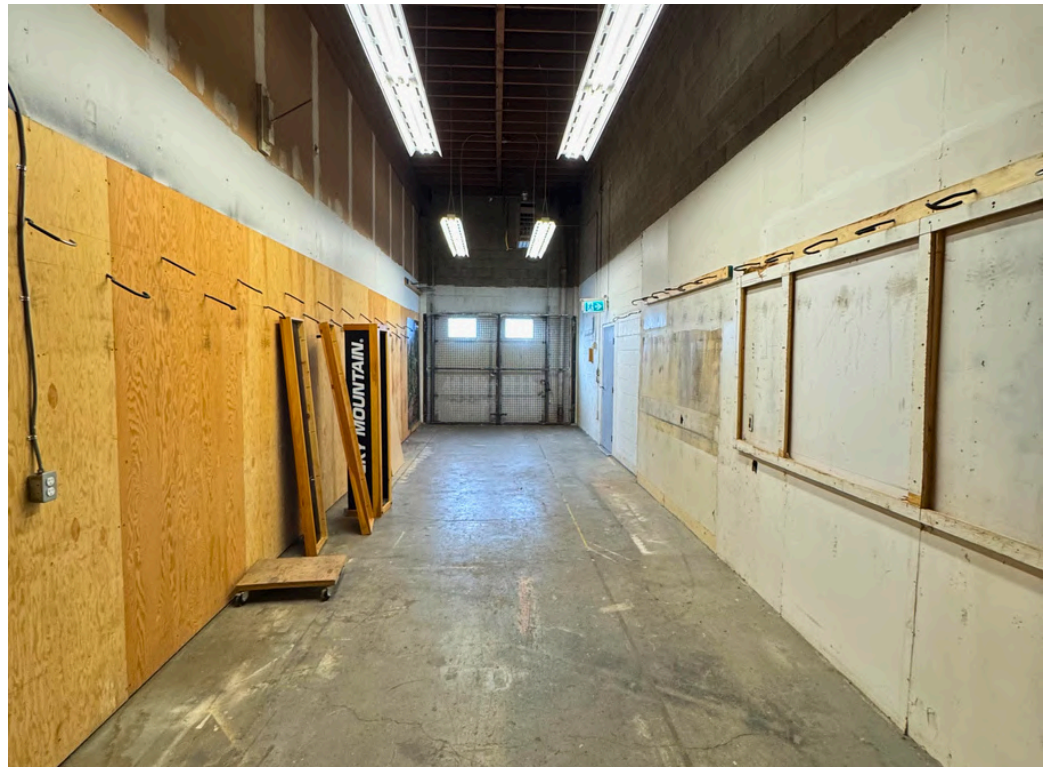
**Additional Rent:**  
\$11.50 per sq.ft.

**Parking:**  
2 Parking Spaces

## Building Features

- High ceiling warehouse unit with mezzanine storage
- Grade level loading door
- Showroom / Office space

Industrial Space | For Lease





**307 Mansfield Place**  
North Vancouver

**Industrial Space | For Lease**

## Nearby Amenities

- Canadian Tire
- Park & Tilford Shopping Centre
- Phibbs Exchange
- McDonald's Restaurant
- MEC
- Mark's Work Wearhouse
- Bank of Montreal
- Tim Hortons
- Wildeye Brewing
- Winners
- Rona
- Whitespot Restaurant



## Location



## Contact Agents

### Ross Forman

Personal Real Estate Corporation  
Principal | Advisor  
[ross@formanpilkington.com](mailto:ross@formanpilkington.com)

### Jeff Pilkington

Personal Real Estate Corporation  
Advisor  
[jeff@formanpilkington.com](mailto:jeff@formanpilkington.com)



### Babych Group Realty Vancouver Ltd.

201, 1 Lonsdale Avenue  
North Vancouver, BC V7M 2E4  
604-980-3003

[www.formanpilkington.com](http://www.formanpilkington.com)

