

FOR LEASE

HIGHWAY 1

GOLDEN DR

CANOE AVE

2407

2429

2431

UNITS 2407, 2429 & 2431

CANOE AVENUE

COQUITLAM, BC



 CUSHMAN & WAKEFIELD

PROPERTY HIGHLIGHTS

OPPORTUNITY

Opportunity to lease warehouse space in Coquitlam within the Mayfair Industrial park. The subject property is centrally located in Coquitlam with easy access to major Highways.



CEILING HEIGHT
20' clear



LOADING
Dock height loading
(may be converted to grade)



ZONING
M2 - Consult agent for further details



LEASE RATE
\$16.95 per square foot, per annum, net

AVAILABLE SPACE

Unit Number	Total Area	Office Component	Electrical	Estimated Additional Rent (Per square foot)	Availability
2407 Canoe Ave	3,300 SF	-	100 Amp 3-phase	\$9.26	Immediate
2429 Canoe Ave*	3,300 SF	720 SF	100 Amp 3-phase	\$9.56	Immediate
2431 Canoe Ave*	4,700 SF	704 SF	200 Amp 3-phase	\$9.56	Immediate

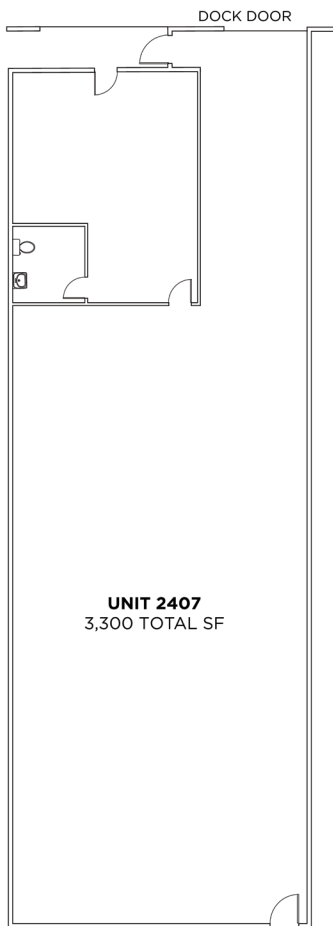
***Units 2429 & 2431 can be combined to lease a total of 8,000 SF*



PHOTOS & FLOORPLANS



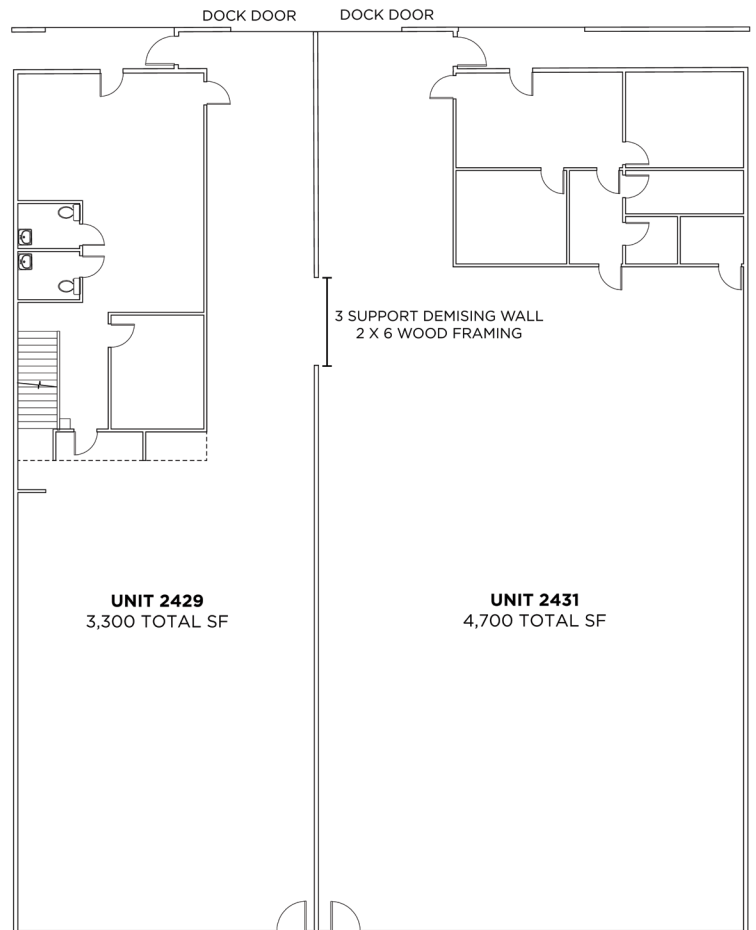
UNIT 2407



MAIN FLOOR



UNITS 2429 & 2431



MAIN FLOOR



©2026 Cushman & Wakefield. All rights reserved. The information contained in this communication is strictly confidential. This information has been obtained from sources believed to be reliable but has not been verified. NO WARRANTY OR REPRESENTATION, EXPRESS OR IMPLIED, IS MADE AS TO THE CONDITION OF THE PROPERTY (OR PROPERTIES) REFERENCED HEREIN OR AS TO THE ACCURACY OR COMPLETENESS OF THE INFORMATION CONTAINED HEREIN, AND SAME IS SUBMITTED SUBJECT TO ERRORS, OMISSIONS, CHANGE OF PRICE, RENTAL OR OTHER CONDITIONS, WITHDRAWAL WITHOUT NOTICE, AND TO ANY SPECIAL LISTING CONDITIONS IMPOSED BY THE PROPERTY OWNER(S). ANY PROJECTIONS, OPINIONS OR ESTIMATES ARE SUBJECT TO UNCERTAINTY AND DO NOT SIGNIFY CURRENT OR FUTURE PROPERTY PERFORMANCE. PD-203021_V4

**FOR MORE INFORMATION,
PLEASE CONTACT:**

ALEX EASTMAN

Senior Associate
Industrial Sales & Leasing
+1 604 608 5933
alex.eastman@cushwake.com

KEVIN VOLZ

Personal Real Estate Corporation
Vice President, Industrial
+1 604 640 5851
kevin.volz@cushwake.com

RICK EASTMAN

Personal Real Estate Corporation
Executive Vice President
+1 604 640 5863
rick.eastman@cushwake.com



STRAWBERRY HILL