



# FOR LEASE

HAZEL CHAN  
Senior Leasing Manager  
hazelc@petersonbc.com  
604 335 9033

## Dilworth Shopping Centre

Peterson

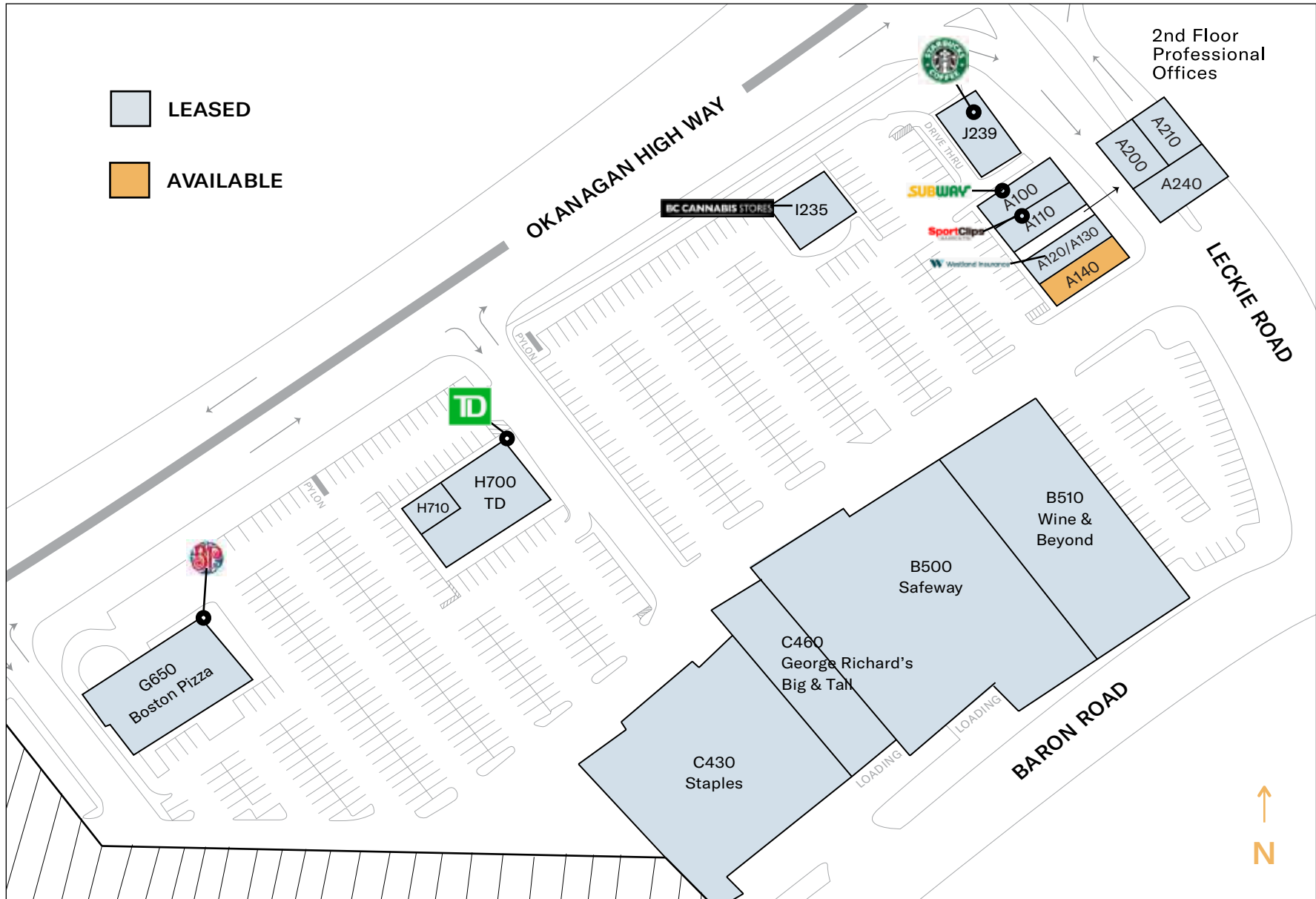
# Peterson

## LOCATION

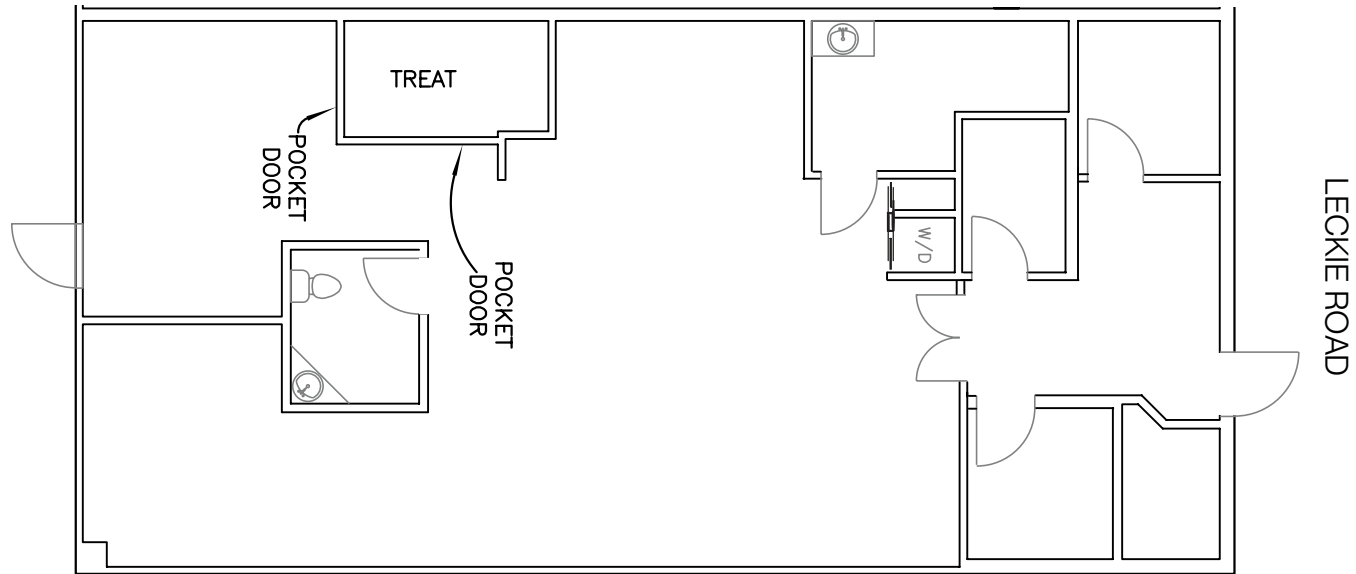
Dilworth Shopping Centre is an open format, grocery anchored retail centre located at the intersection of Okanagan Highway (Hwy 97) and Leckie Road in Kelowna, BC. Dilworth's location benefits from excellent access, over 1,500 feet of Highway 97 frontage, and exposure to over 60,000 vehicles daily.



SITE PLAN



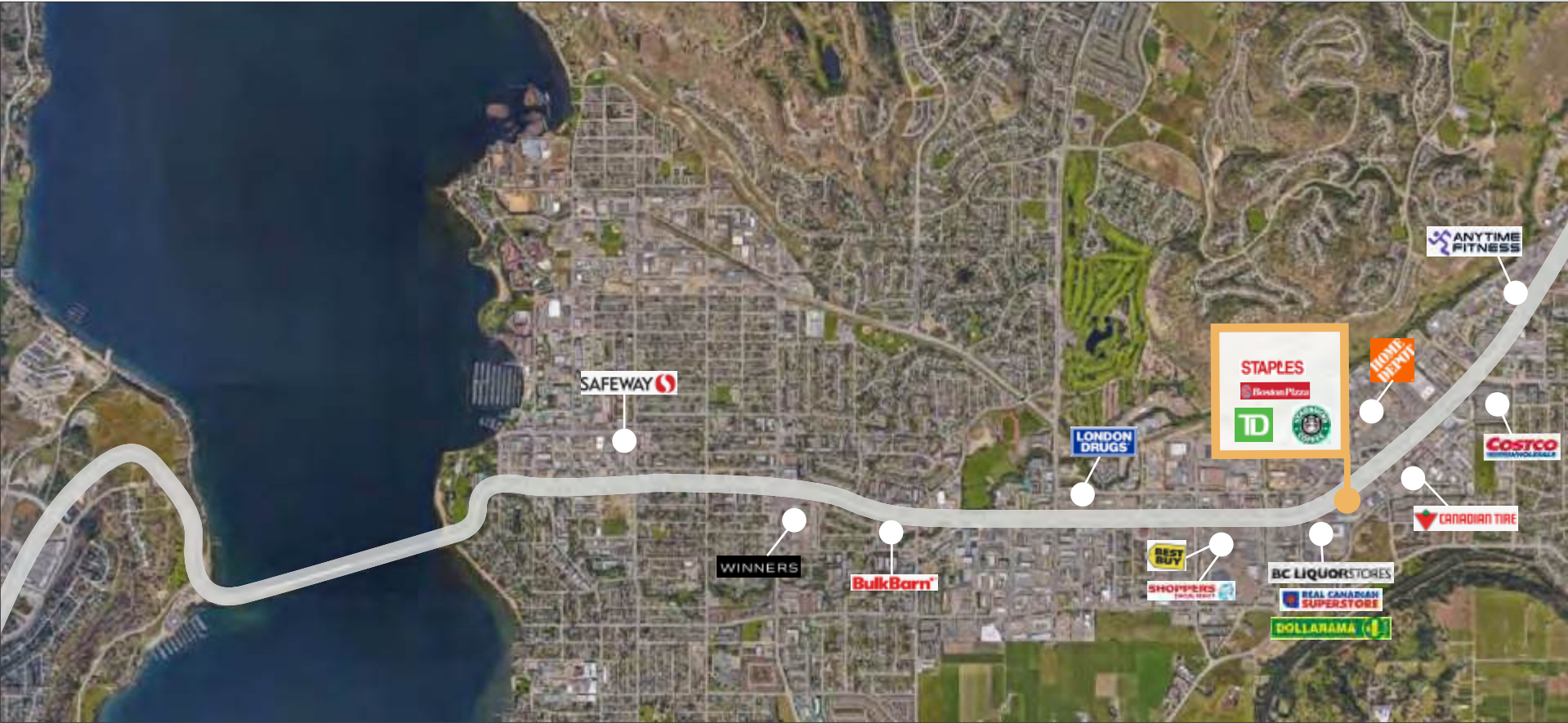
SALIENT DETAILS



<b>Address</b>	A140 - 1640 Leckie Road, Kelowna
<b>Rentable Area</b>	1,794 SF
<b>Lease Type</b>	NNN
<b>Base Rent</b>	Contact us
<b>Additional Rent</b>	\$16.53 PSF (2026 estimate)
<b>Available Date</b>	Contact us

<b>Power</b>	200 amps, 42 circuits
<b>Water</b>	8" supply line
<b>Gas</b>	N/A
<b>HVAC</b>	5 tons
<b>Kitchen Exhaust</b>	N/A
<b>Sanitary Line</b>	4" line

LOCATION SITE MAP



# About Peterson

From one building on Vancouver's Alberni Street to a range of influential projects across North America, we've expanded into diverse areas of expertise across the real estate industry. We believe our growth is made possible by practicing our values – putting relationships first and standing by our word. As we continue to strive for Something Greater, our entrepreneurial spirit powers an active set of guiding principles designed to give each business pillar a profound sense of purpose.

Powered by our business acumen and our big picture outlook, we're meeting the demand of local and global businesses alike. As workplaces evolve, we strive to create spaces where businesses can thrive, connect, and grow in today's new marketplace. Our strong portfolio of prime urban locations across North America positions Peterson as a reliable partner when developing commercial office strategies.



# Peterson's Commitment to ESG

Environmental, Social and Governance (ESG) provides Peterson with the opportunity to focus on addressing the environmental impacts from our business operations, delivering social benefits to the communities where we work and ensuring good governance to strengthen the trust of our stakeholders.

Peterson has implemented an ESG Framework + Policy that is forward-thinking, comprehensive and a natural extension of our founding Values. We will use our ESG Framework + Policy to build momentum towards our ESG initiatives, and incorporate ESG throughout our business in order to improve operations and to lead by example for other community leaders seeking to do better.

