

PRIME GROUND FLOOR RETAIL SPACE

219 Queen Street

TRURO, NOVA SCOTIA



2,500 SF



HIGHLY VISIBLE
COMMERCIAL SPACE



EXCEPTIONAL
LOCATION



CBRE

Location

LOCATION OVERVIEW

Welcome to 219 Queen Street. Well positioned near the intersection of Queen and Waddell Street, this new mixed-use development is just steps away from Truro's main commercial node.

Often referred to as the "Hub of Nova Scotia", Truro is a bustling and growing town that offers a blend of small-town charm and modern business community. Emerging as a new residential growth area, Truro is home to hundreds of thriving businesses.

The surrounding area is energetic and full of life. Within just a short walk from the building, you will find all that Truro has to offer; unique cafes, shops, restaurants, and services.



POPULATION

36,282



WALK SCORE

87



AVG. HOUSEHOLD INCOME

\$85,267



Property Overview

PROPERTY OVERVIEW

LOCATION

Queen Street, Truro

PROPERTY TYPE

Mixed-Use

SPACE

Ideal for retail, café, services or office

AVAILABLE

± 2,500 SF

NET RENT

Please contact

ADDITIONAL RENT

\$8.00 psf + utilities



Ideal Retail Location



High Walk Score



Ample Signage Opportunities



Excellent Natural Lighting

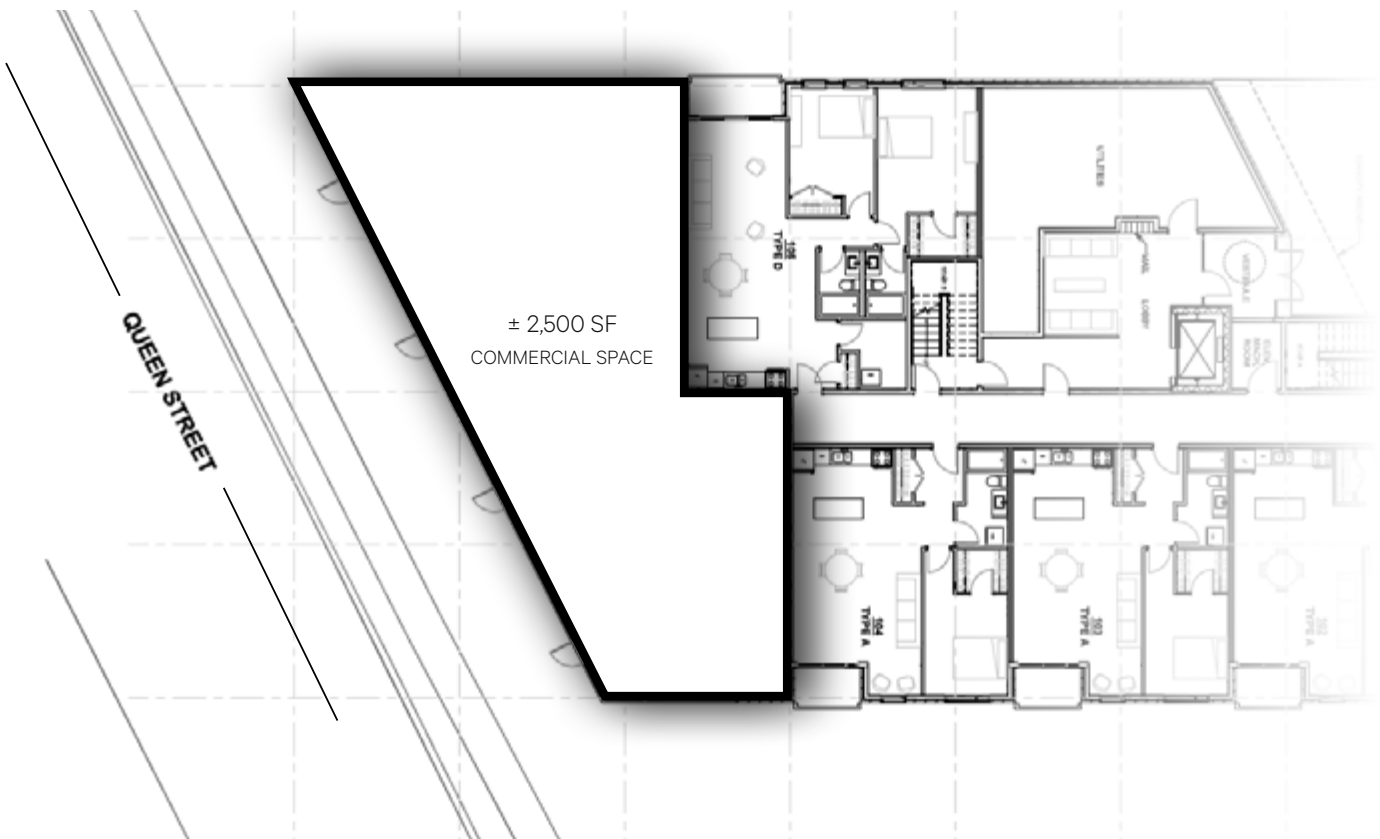


Highly Visible Store Front



Flexible Floor Plan

FLOOR PLAN



Photographs





For more information, please contact:

Donald Tabor

Senior Sales Associate

T 902 492 2061

M 902 471 0481

donald.tabor@cbre.com