

# FOR LEASE

## 1535 Snyder's Road E, Petersburg, Unit #C4



### PROPERTY SPECIFICATIONS

**Intersection** Hwy 8 – Queen St.

**Unit Size** 5,212 sq ft (approx.)

**Zoning** Z10 & Z10a

**Power** 50 Amps 120/240 Volts (Single Phase)

**Lease Rate** **\$10.00/sq ft net**

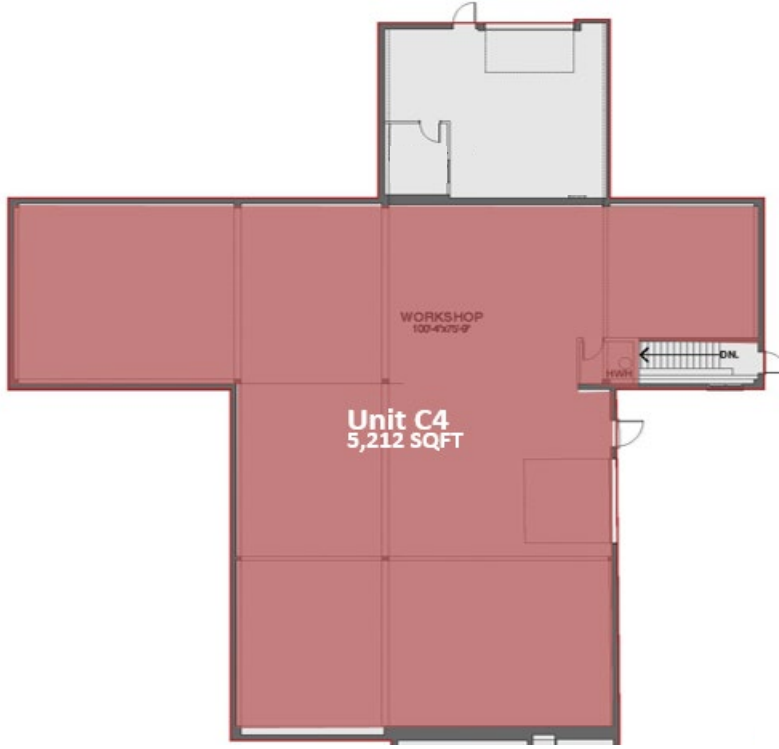
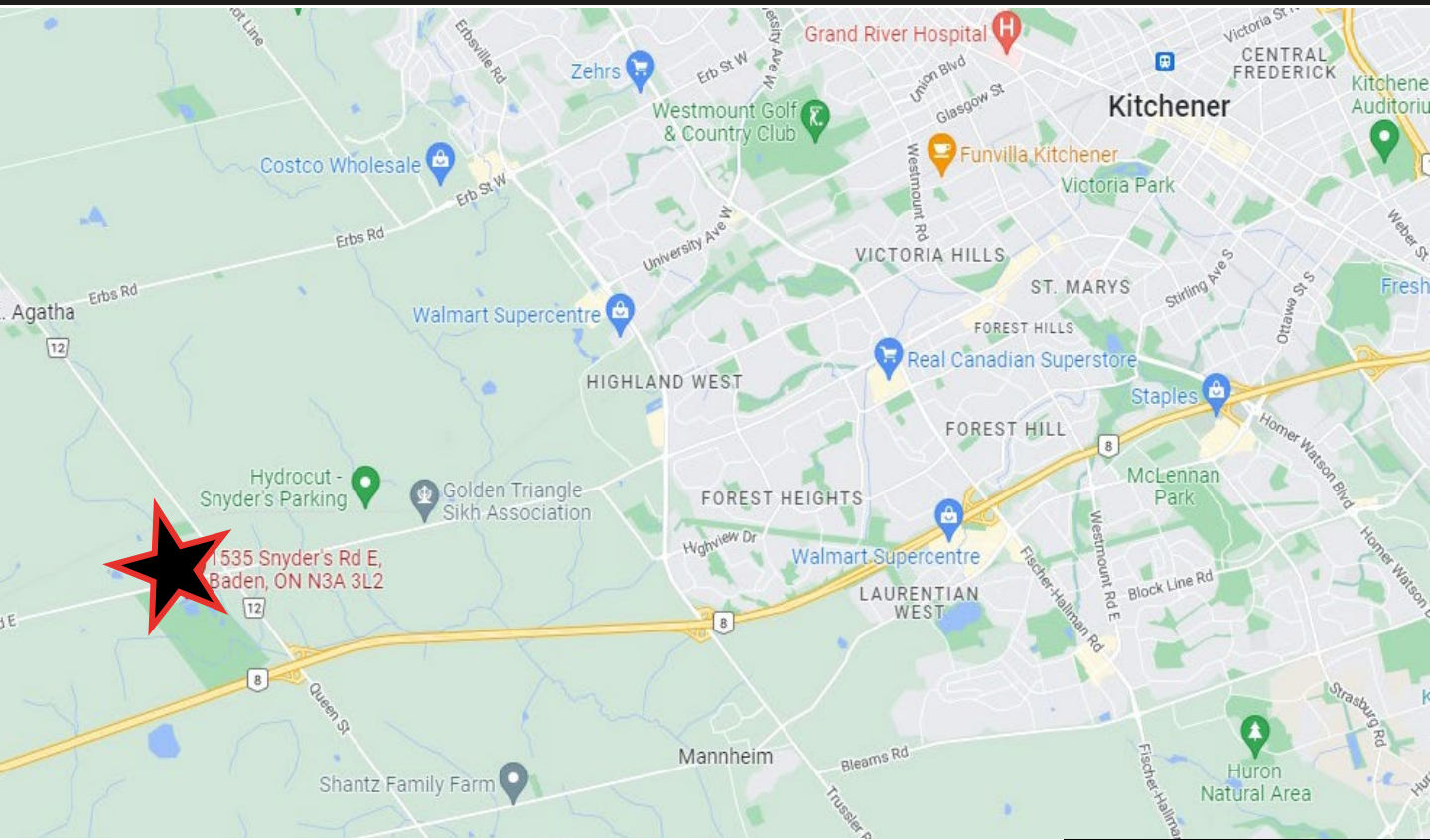
**Additional Rent** **\$4.87**

### HIGHLIGHTS

- 5,212 SF industrial unit available November 1, 2025
- Zoned Z10/Z10A permitting a wide range of uses (subject to approval)
- One drive-in door for convenient loading and deliveries
- Central location with excellent access to HWY 8 and regional transportation routes
- Cost-efficient operating expenses for tenants
- Flexible layout suitable for a variety of industrial and commercial operations

# FOR LEASE

## 1535 Snyder's Road E, Petersburg, Unit #C4



**John Markou**  
Broker, Principal  
[john@coupalmarkou.com](mailto:john@coupalmarkou.com)  
519-742-7000 x 102

**Coupal Markou Commercial Real Estate Inc., Brokerage**  
150 King Street South  
Waterloo, ON N2J 1P6  
OFFICE 519-742-7000  
FAX 519-742-7070



[www.coupalmarkou.com](http://www.coupalmarkou.com)

This disclaimer shall apply to Coupal Markou Commercial Real Estate Inc., Brokerage, to include all employees and independent contractors. The information set out herein is for advertising purposes, and any images, assumptions, estimates and property details have been obtained from sources deemed to be reliable. No warranty or representation is made as to its accuracy, correctness and completeness of the information, being subject to errors, omissions, conditions, prior sale / lease, withdrawal or other changes without notice. The recipient of the information should conduct its own inquiries and investigations prior to placing any reliance upon the information. MLS