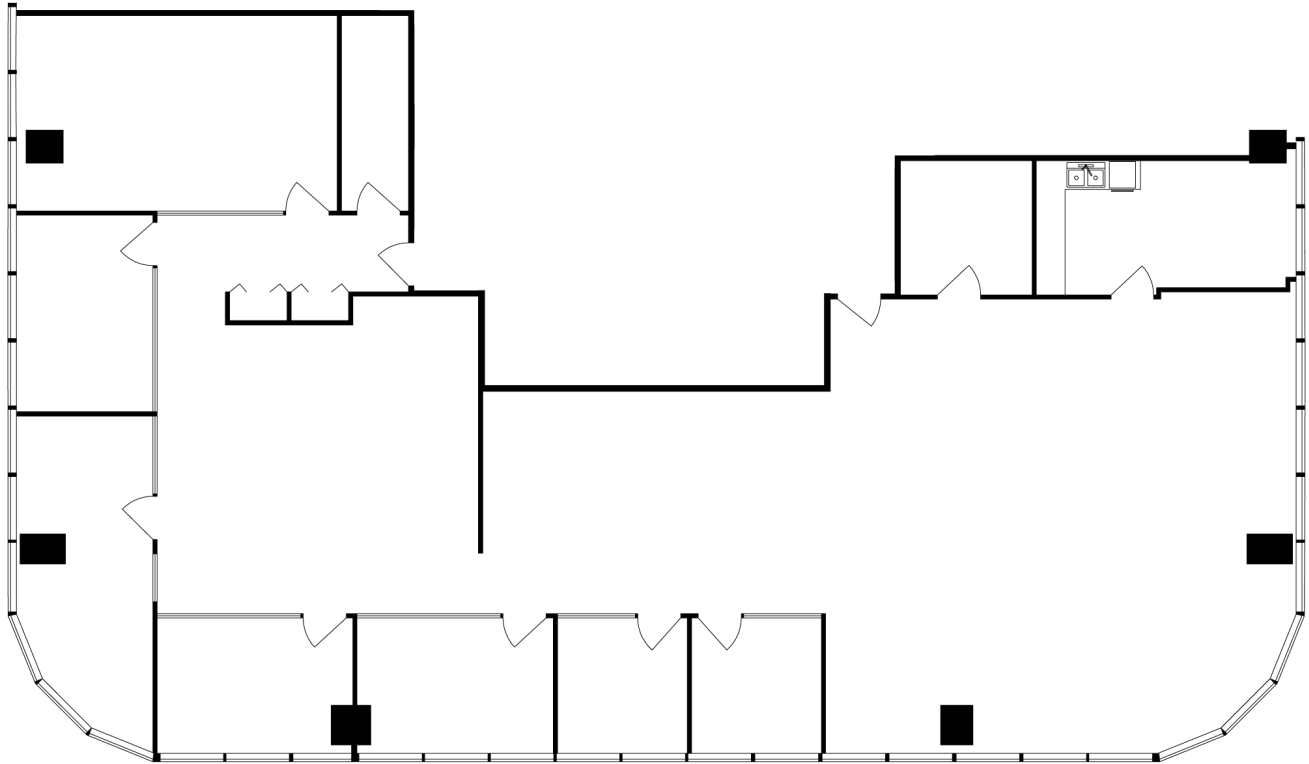


**Rentable Area:** 3,972 SF

**Availability:** Immediately

# | Unit 650

Move-in ready premises, fully built out and ready for you to get straight to business with no construction delays. Bright office space with sweeping city views, seven private offices, open plan work areas, a storage room, and kitchen, designed for teams seeking both privacy and collaboration.



**LENIA CALICO**  
**SENIOR LEASING MANAGER**  
604.220.9519  
lcalico@warringtonpci.com

E. & O.E.: The information contained herein was obtained from sources which we deem reliable, and while thought to be correct, is not guaranteed by Warrington PCI Management.